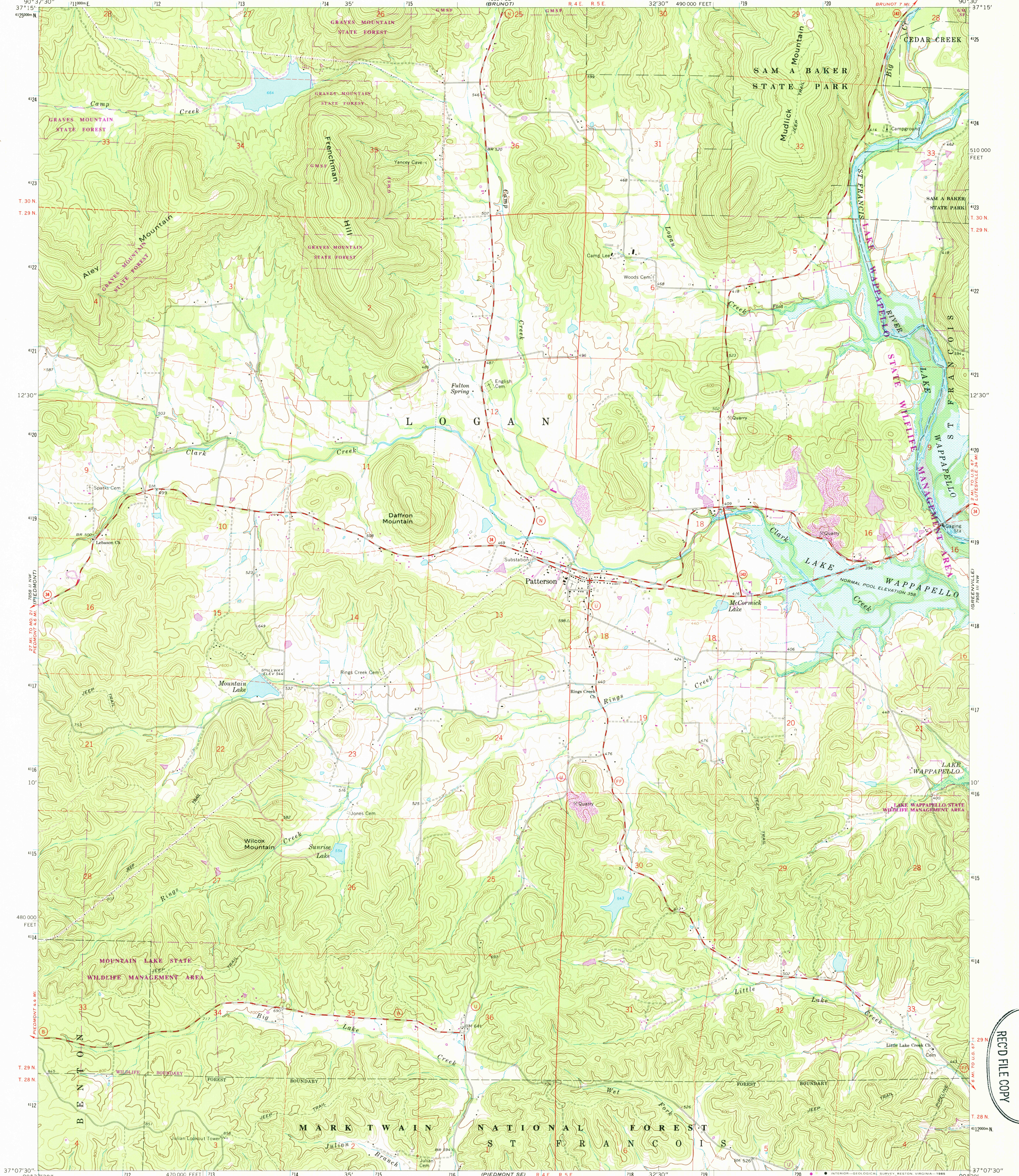


7858 I SW  
(DES ARO)

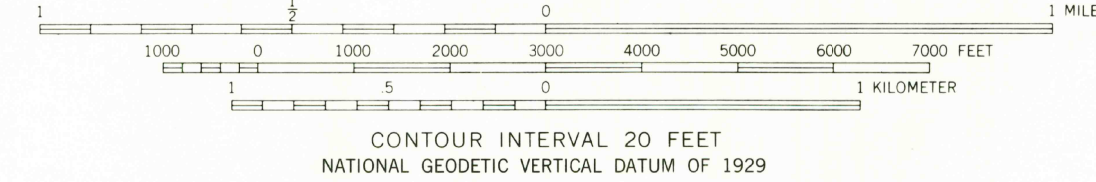
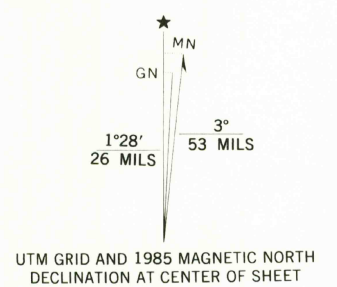
UNITED STATES  
DEPARTMENT OF THE INTERIOR  
GEOLOGICAL SURVEY

PATTERSON QUADRANGLE  
MISSOURI-WAYNE CO.  
7.5 MINUTE SERIES (TOPOGRAPHIC)

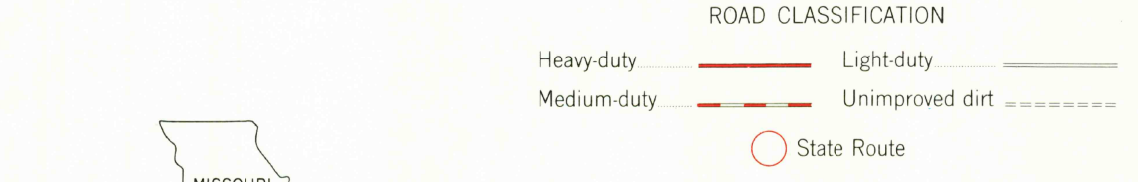
7858 I SW  
(COLDWATER)



Mapped, edited, and published by the Geological Survey  
Control by USGS and USC&GS  
Topography by photogrammetric methods from aerial  
photographs taken 1966. Field checked 1968  
Polyconic projection. 1927 North American datum  
10,000-foot grid based on Missouri coordinate system, east zone  
1000-meter Universal Transverse Mercator grid ticks,  
zone 15, shown in blue  
Areas covered by dashed light-blue pattern  
are subject to controlled inundation  
To place on the predicted North American Datum 1983  
move the projection lines 3 meters south and  
10 meters east as shown by dashed corner ticks  
There may be private inholdings within the boundaries of  
the National or State reservations shown on this map



THIS MAP COMPLIES WITH NATIONAL MAP ACCURACY STANDARDS  
FOR SALE BY U. S. GEOLOGICAL SURVEY, DENVER, COLORADO 80225, OR RESTON, VIRGINIA 22092,  
AND THE DIVISION OF GEOLOGY AND LAND SURVEY  
MISSOURI DEPARTMENT OF NATURAL RESOURCES, ROLLA, MISSOURI 65401  
A FOLDER DESCRIBING TOPOGRAPHIC MAPS AND SYMBOLS IS AVAILABLE ON REQUEST



Revisions shown in purple compiled from aerial  
photographs taken 1982 and other sources  
This information not field checked. Map edited 1985

PATTERSON, MO.  
37090-B5-TF-024  
1968  
PHOTOREVISED 1985  
DMA 7858 II NE-SERIES V879

USGS MND HISTORICAL MAP  
MAR 14 1986  
REC'D FILE COPY