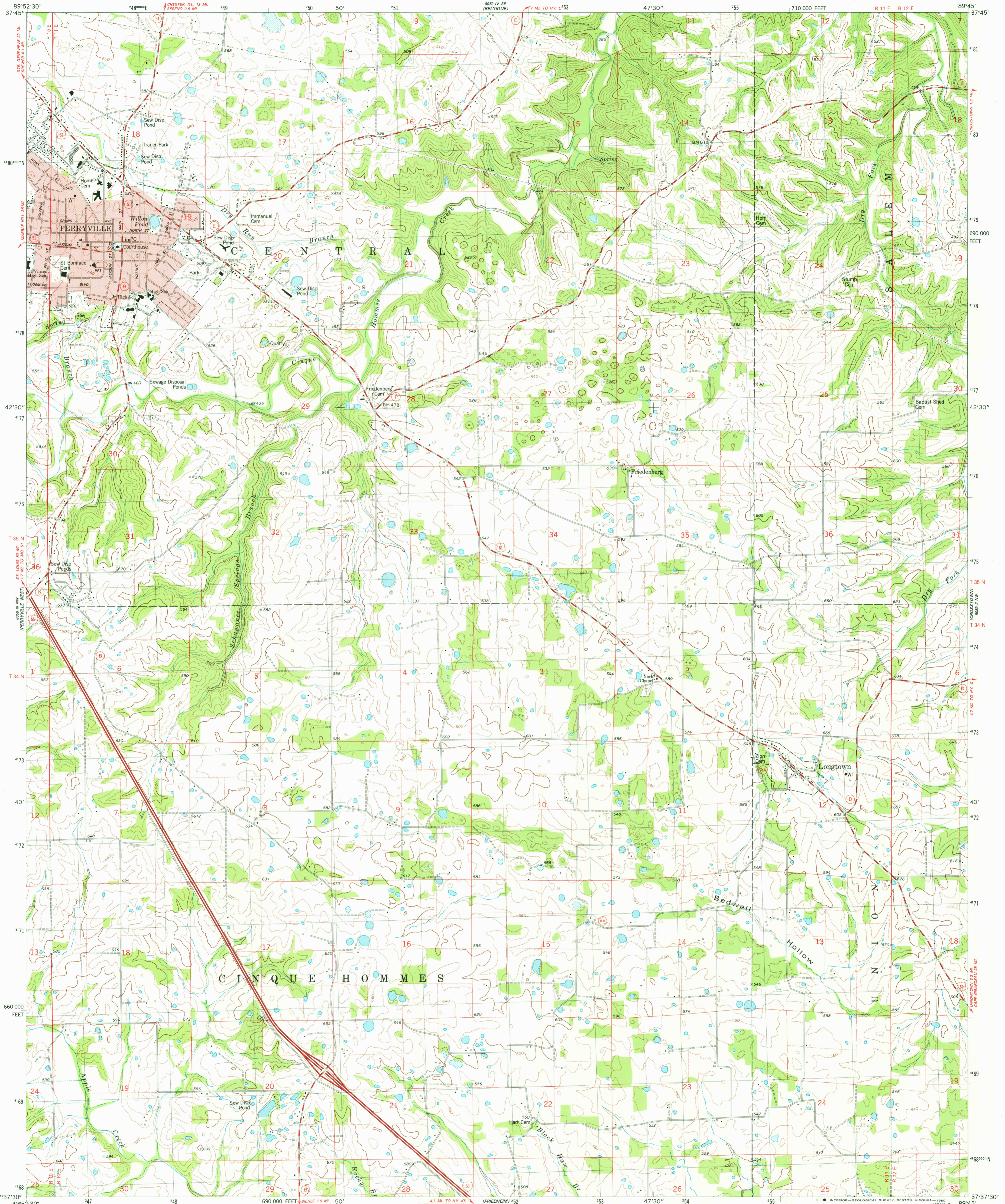
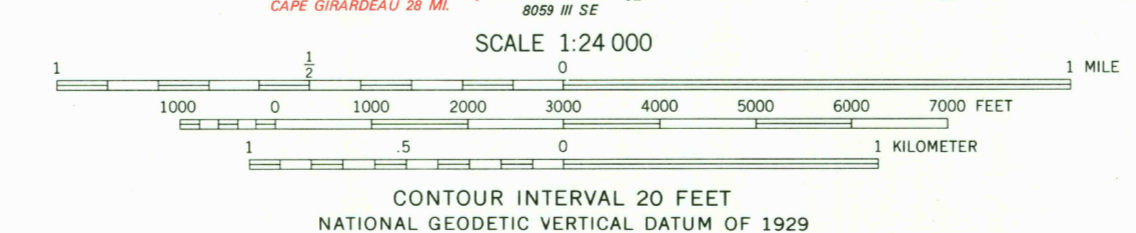
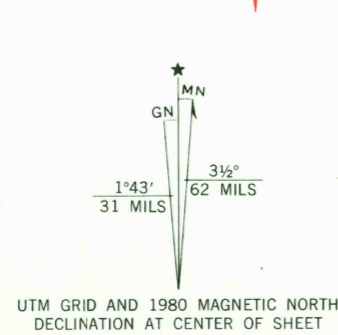


UNITED STATES  
DEPARTMENT OF THE INTERIOR  
GEOLOGICAL SURVEY

PERRYVILLE EAST QUADRANGLE  
MISSOURI—PERRY CO.  
7.5 MINUTE SERIES (TOPOGRAPHIC)  
NE4 PERRYVILLE 15' QUADRANGLE



Mapped, edited, and published by the Geological Survey  
Control by USGS and NOS/NOAA  
Topography by photogrammetric methods from aerial photographs taken 1974. Field checked 1976. Map edited 1980  
Projection and 10,000-foot grid ticks: Missouri coordinate system, east zone (transverse Mercator)  
1000-meter Universal Transverse Mercator grid, zone 16 1927 North American Datum  
To place on the predicted North American Datum 1983 move the projection lines 3 meters south and 8 meters east as shown by dashed corner ticks  
Red tint indicates area in which only landmark buildings are shown  
Fine red dashed lines indicate selected fence and field lines where generally visible on aerial photographs. This information is unchecked



CONTOUR INTERVAL 20 FEET  
NATIONAL GEODETIC VERTICAL DATUM OF 1929  
THIS MAP COMPLIES WITH NATIONAL MAP ACCURACY STANDARDS  
FOR SALE BY U. S. GEOLOGICAL SURVEY, DENVER, COLORADO 80225, OR RESTON, VIRGINIA 22092,  
AND THE DIVISION OF GEOLOGY AND LAND SURVEY  
MISSOURI DEPARTMENT OF NATURAL RESOURCES, ROLLA, MISSOURI 65401  
A FOLDER DESCRIBING TOPOGRAPHIC MAPS AND SYMBOLS IS AVAILABLE ON REQUEST

**ROAD CLASSIFICATION**

Primary highway, hard surface	Light-duty road, hard or improved surface
Secondary highway, hard surface	Unimproved road
Interstate Route	U. S. Route
	State Route

USGS Historical File  
Topographic Division

PERRYVILLE EAST, MO.  
NE4 PERRYVILLE 15' QUADRANGLE  
N3737.5-W8945/7.5

1980  
DMA 8059 III NE-SERIES V879



AUG 11 1980  
1900