

(Lees Summit)

Advance sheet  
Subject to correction

U. S. G. S.  
**FILE COPY**  
Inspection and Editing.

(Tarsney)

DEPARTMENT OF THE INTERIOR  
U. S. GEOLOGICAL SURVEY

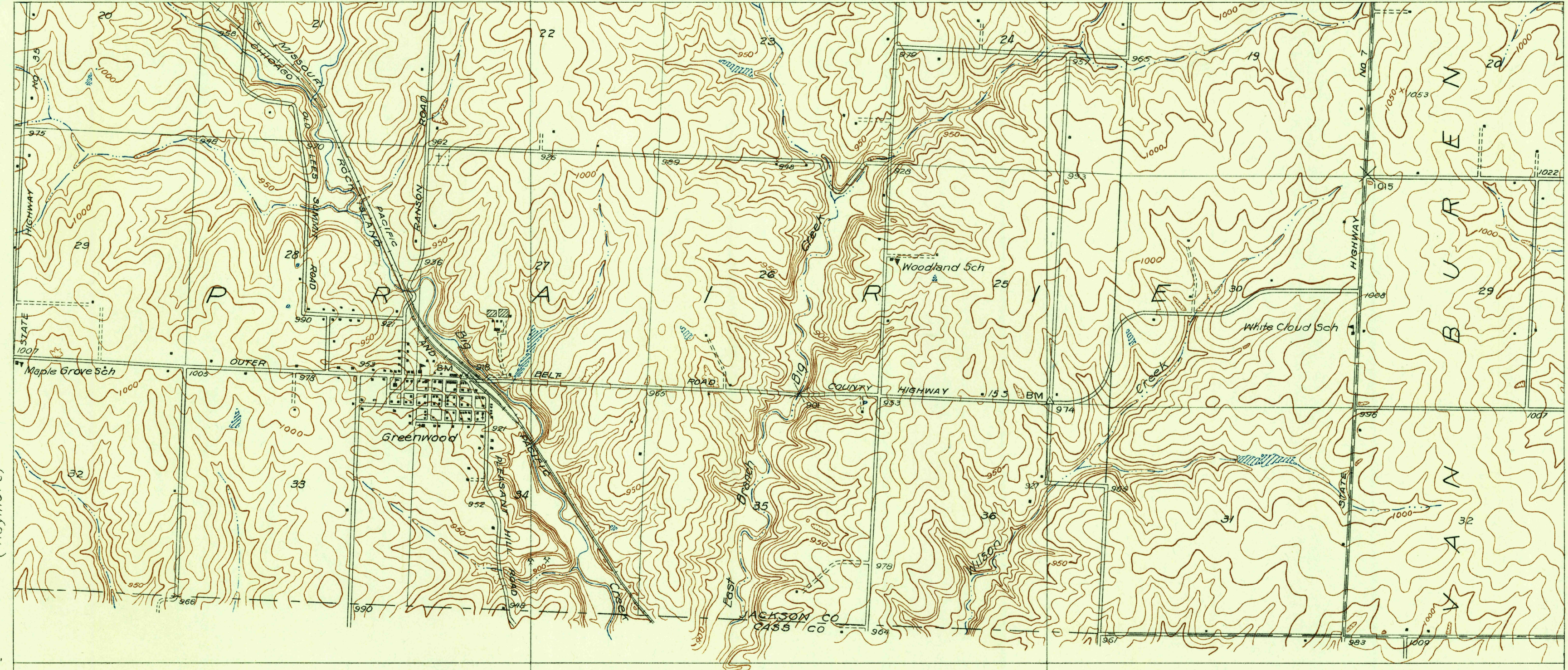
STATE OF MISSOURI  
GEOLOGICAL SURVEY AND WATER RESOURCES  
H. A. BUEHLER, STATE GEOLOGIST

MISSOURI  
**PLEASANT HILL QUADRANGLE**

38°52'30" 94°22'30" 20' R.31 W. 17'30" 38°52'30" 94°15'

(Raymore)  
T.47 N.  
T.46 N.  
50'

(Strasburg)  
T.47 N.  
T.46 N.  
50'



38°48'45" 94°22'30" R.31 W. 20' (Harrisonville 125000) 17'30" R.30 W. 38°48'45" 94°15'

(Harrisonville)  
125000

(Harrisonville)  
125000

Glenn S. Smith, Division Engineer  
Topography by T.T. White  
Control by U. S. Geological Survey  
Surveyed in 1934

Polyconic projection, 1927 North American datum

USGS  
Historical File  
Topographic Division

PLEASANT HILL, MO.

TRUE NORTH  
MAGNETIC NORTH  
APPROXIMATE MEAN  
DECLINATION 1984

