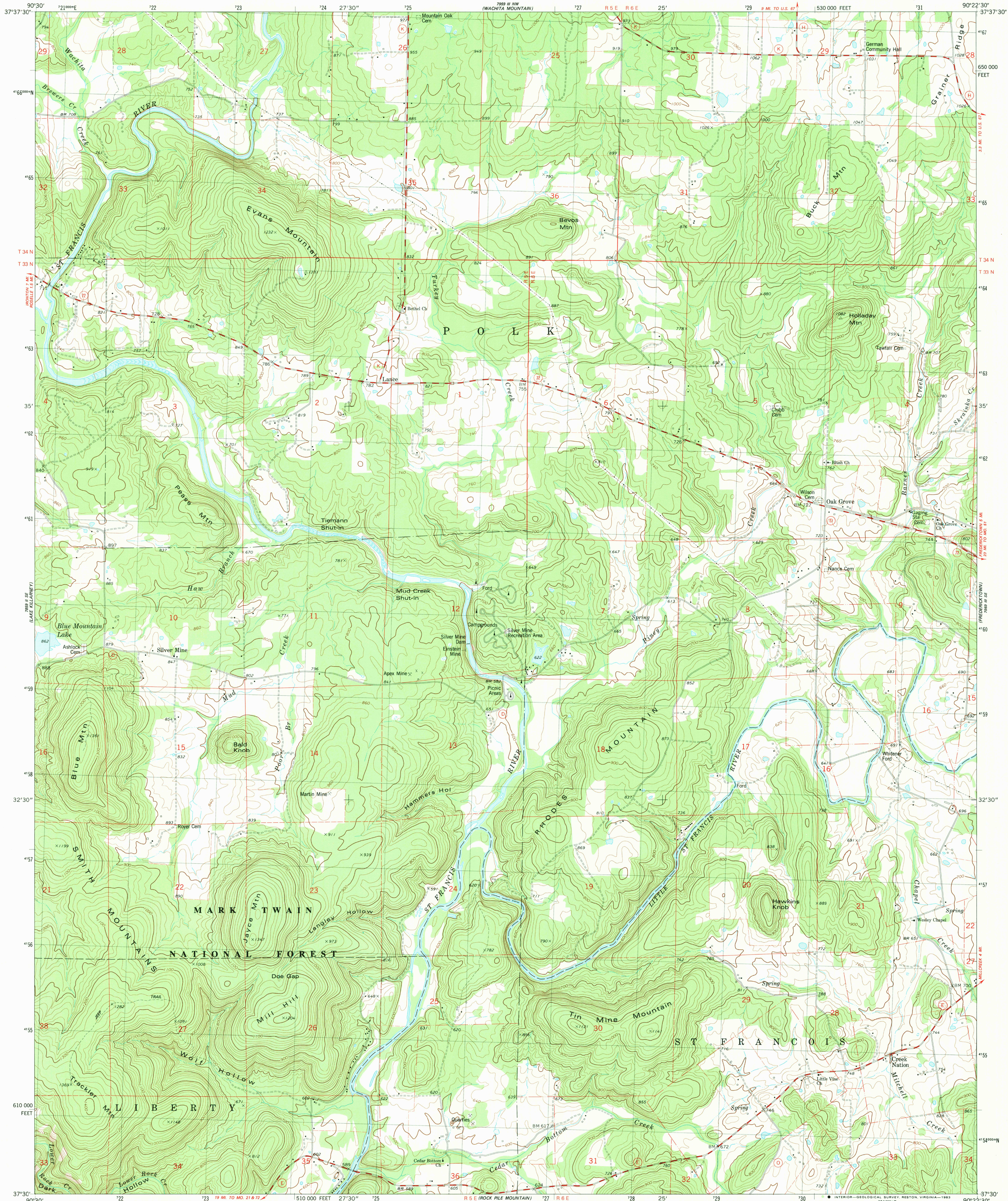
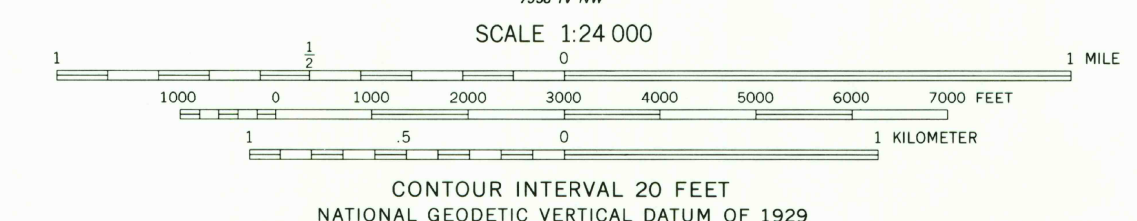
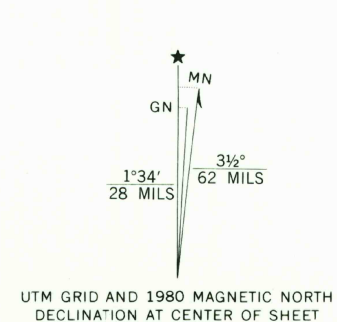


UNITED STATES  
DEPARTMENT OF THE INTERIOR  
GEOLOGICAL SURVEY

RHODES MOUNTAIN QUADRANGLE  
MISSOURI-MADISON CO.  
7.5 MINUTE SERIES (TOPOGRAPHIC)  
SW/4 FREDERICKTOWN 15' QUADRANGLE



Mapped, edited, and published by the Geological Survey  
Control by USGS and NOS/NOAA  
Topography by photogrammetric methods from aerial photographs taken 1974. Field checked 1976. Map edited 1980  
Projection and 10,000-foot grid ticks: Missouri coordinate system, east zone (transverse Mercator)  
1000-meter Universal Transverse Mercator grid, zone 15  
1927 North American Datum  
To place on the predicted North American Datum 1983 move the projection lines 3 meters south and 9 meters east as shown by dashed corner ticks  
There may be private inholdings within the boundaries of the National or State reservations shown on this map  
Fine red dashed lines indicate selected fence and field lines where generally visible on aerial photographs. This information is unchecked



THIS MAP COMPLIES WITH NATIONAL MAP ACCURACY STANDARDS  
FOR SALE BY U.S. GEOLOGICAL SURVEY, DENVER, COLORADO 80225, OR RESTON, VIRGINIA 22092  
AND DIVISION OF GEOLOGY AND LAND SURVEY  
MISSOURI DEPARTMENT OF NATURAL RESOURCES, ROLLA, MISSOURI 65401  
A FOLDER DESCRIBING TOPOGRAPHIC MAPS AND SYMBOLS IS AVAILABLE ON REQUEST



ROAD CLASSIFICATION  
Primary highway, hard surface  
Secondary highway, hard surface  
Unimproved road  
Interstate Route  
U. S. Route  
State Route

RHODES MOUNTAIN, MO.  
SW/4 FREDERICKTOWN 15' QUADRANGLE  
N3730-W9022.5/7.5

RETURN TO:  
USGS NMD HISTORICAL MAP ARCHIVE

1980  
DMA 7959 III SW-SERIES V879