

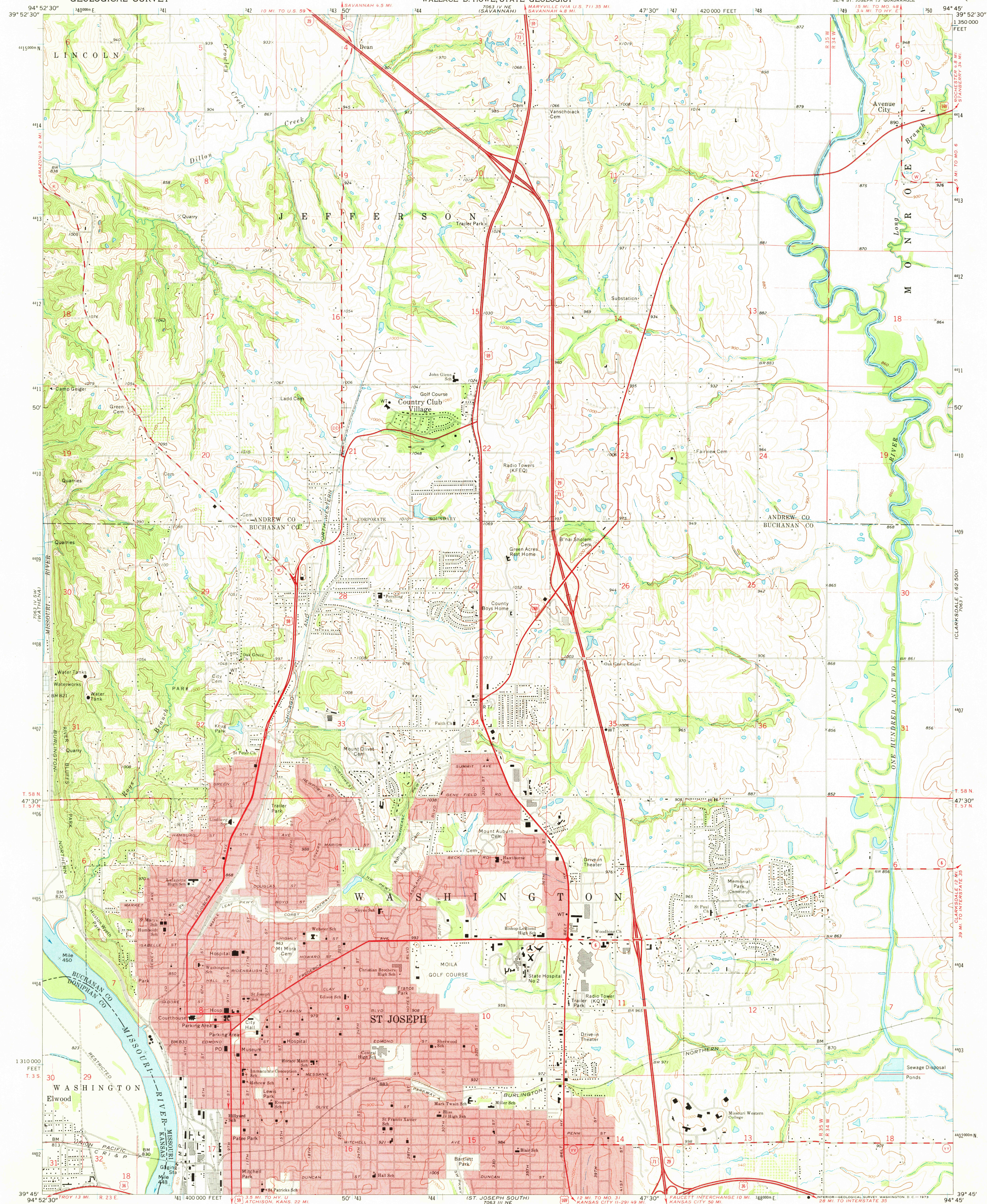
7063 IV SW
(WATHEVA)

UNITED STATES
DEPARTMENT OF THE INTERIOR
GEOLOGICAL SURVEY

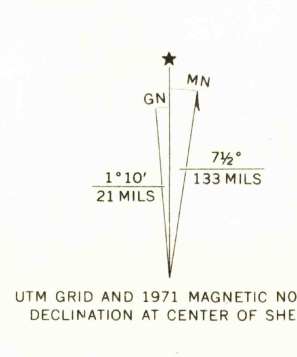
STATE OF MISSOURI
GEOLOGICAL SURVEY AND WATER RESOURCES
WALLACE B. HOWE, STATE GEOLOGIST

ST. JOSEPH NORTH QUADRANGLE
MISSOURI-KANSAS
7.5 MINUTE SERIES (TOPOGRAPHIC)

7063 I
CLARKSDALE
1:62 500



Mapped, edited, and published by the Geological Survey
Control by USGS and USC&GS
Topography by photogrammetric methods from aerial
photographs taken 1969. Field checked 1971
Polyconic projection. 1927 North American datum
10,000-foot grid based on Missouri coordinate system, west zone
1000-meter Universal Transverse Mercator grid ticks,
zone 15, shown in blue
Red tint indicates areas in which only landmark buildings are shown
Fine red dashed lines indicate selected fence and field lines where
generally visible on aerial photographs. This information is unchecked



THIS MAP COMPLIES WITH NATIONAL MAP ACCURACY STANDARDS
FOR SALE BY U.S. GEOLOGICAL SURVEY, DENVER, COLORADO 80225, OR WASHINGTON, D.C. 20422,
MISSOURI GEOLOGICAL SURVEY, ROLLA, MISSOURI 65401,
AND STATE GEOLOGICAL SURVEY, LAWRENCE, KANSAS 66044
A FOLDER DESCRIBING TOPOGRAPHIC MAPS AND SYMBOLS IS AVAILABLE ON REQUEST

ROAD CLASSIFICATION
Primary highway, hard surface
Secondary highway, hard surface
Unimproved road
Interstate Route
U.S. Route
State Route
ST. JOSEPH NORTH, MO.-KANS.
SE 1/4 ST. JOSEPH 15' QUADRANGLE
N3945-W9445/7.5
1971
AMS 7063 IV SE-SERIES V879

MAR 1 1979
3070