

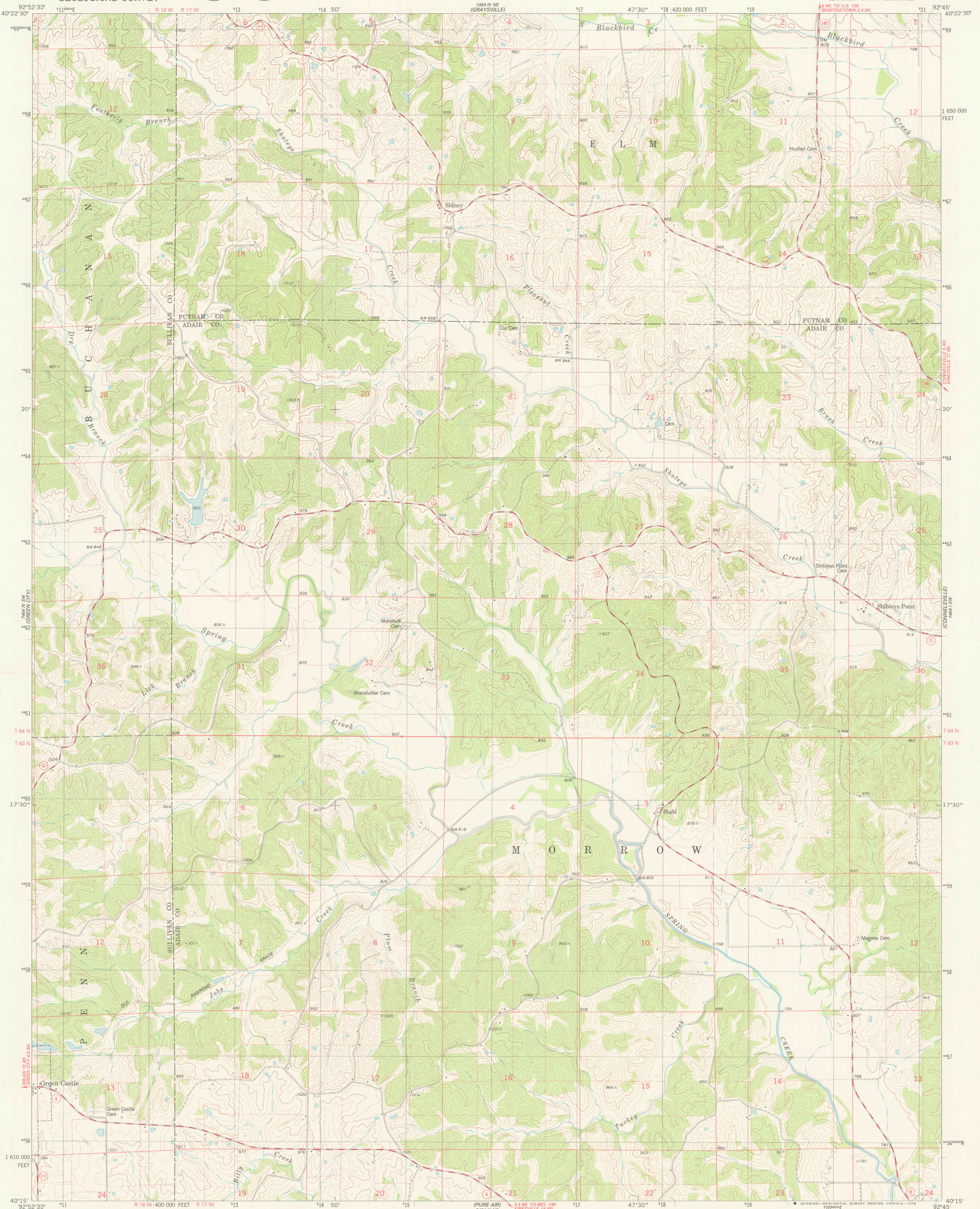
UNIONVILLE EAST

UNITED STATES DEPARTMENT OF THE INTERIOR GEOLOGICAL SURVEY

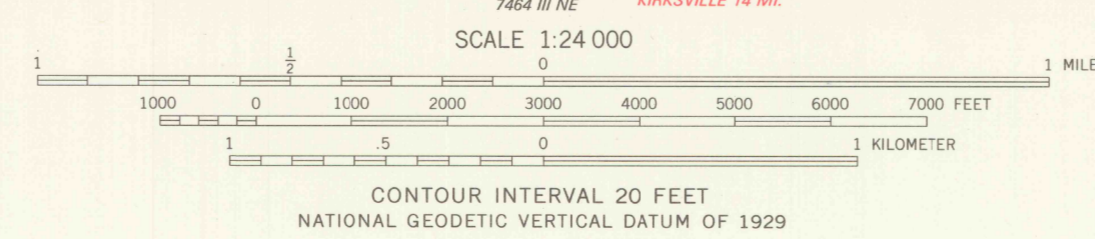
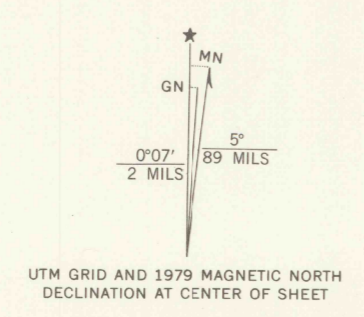


STAHL QUADRANGLE MISSOURI 7.5 MINUTE SERIES (TOPOGRAPHIC)

CONWAYVILLE EAST

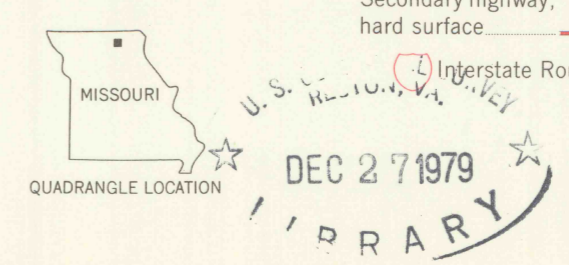


Mapped, edited, and published by the Geological Survey. Control by USGS and NOS/NOAA. Topography by photogrammetric methods from aerial photographs taken 1974. Field checked 1976. Map edited 1979. Projection and 10,000-foot grid ticks: Missouri coordinate system, central zone (transverse Mercator) 1000-meter Universal Transverse Mercator grid, zone 15 1927 North American datum. Fine red dashed lines indicate selected fence and field lines where generally visible on aerial photographs. This information is unchecked.



ROAD CLASSIFICATION table with symbols for Primary highway, Secondary highway, Interstate Route, U.S. Route, and State Route.

THIS MAP COMPLIES WITH NATIONAL MAP ACCURACY STANDARDS FOR SALE BY U.S. GEOLOGICAL SURVEY, DENVER, COLORADO 80225, OR RESTON, VIRGINIA 22092, AND THE DIVISION OF RESEARCH AND TECHNICAL INFORMATION, MISSOURI DEPARTMENT OF NATURAL RESOURCES, ROLLA, MISSOURI 65401. A FOLDER DESCRIBING TOPOGRAPHIC MAPS AND SYMBOLS IS AVAILABLE ON REQUEST.



STAHL, MO. SE/4 GREEN CITY 18' QUADRANGLE N4015 - W9245/7.5 1979

AMS 7464 IV SE-SERIES V879