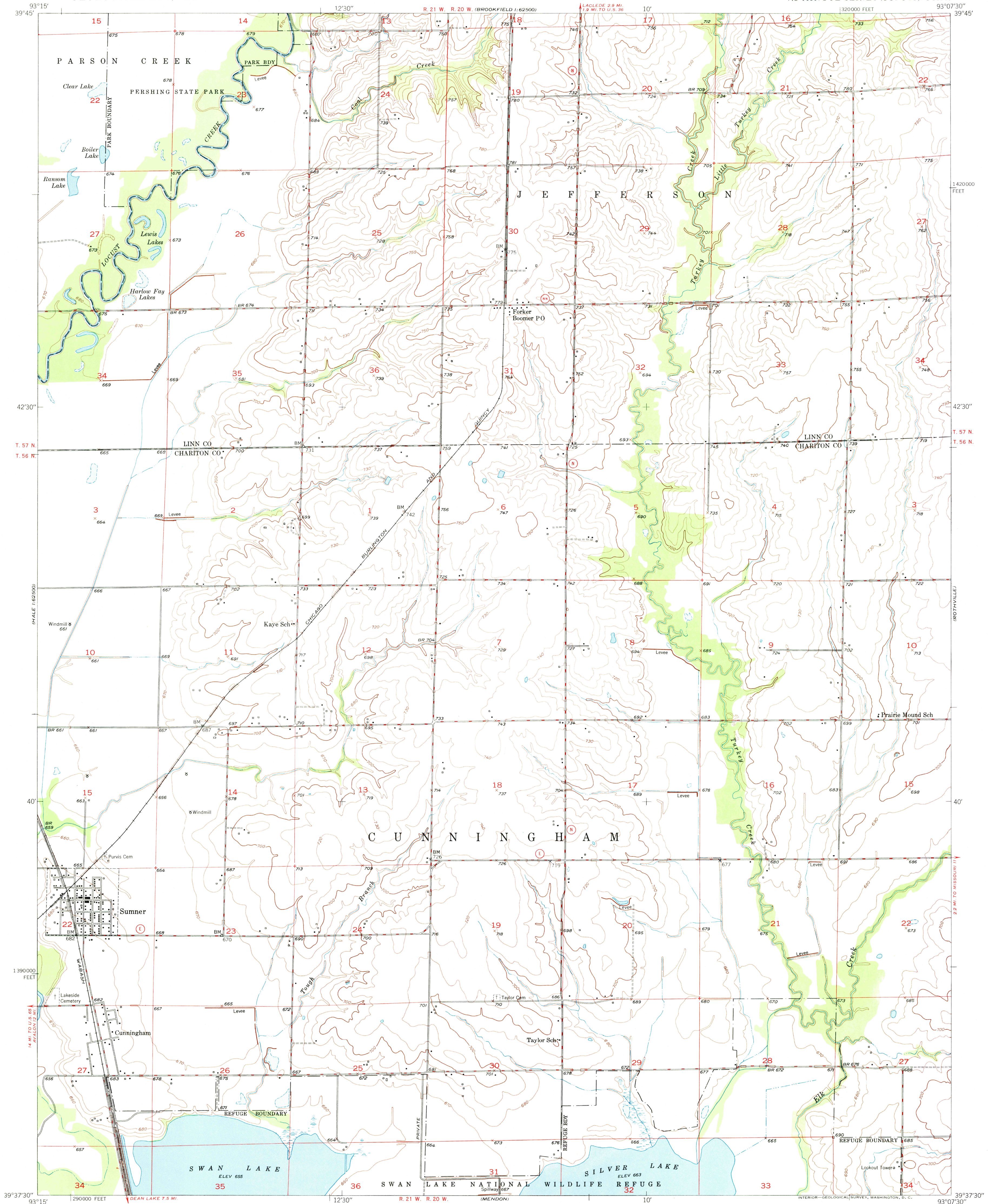


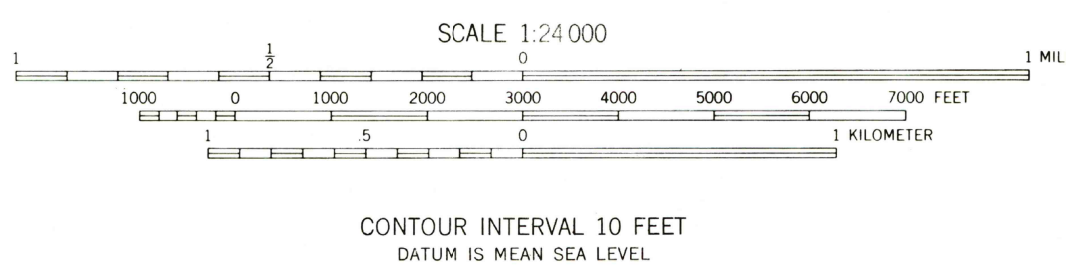
UNITED STATES
DEPARTMENT OF THE INTERIOR
GEOLOGICAL SURVEY

SUMNER QUADRANGLE
MISSOURI
7.5 MINUTE SERIES (TOPOGRAPHIC)



Maped, edited and published by the Geological Survey
as part of the Department of the Interior program
for the development of the Missouri River Basin
Control by USGS and USC&GS
Culture and drainage in part compiled from
aerial photographs taken 1940
Topography by plane-table methods 1949
Polyconic projection. 1927 North American datum
10,000-foot grid based on Missouri coordinate system,
central zone

TRUE NORTH
MAGNETIC NORTH
APPROXIMATE MEAN
DECLINATION, 1949



ROAD CLASSIFICATION
HARD-SURFACE ALL WEATHER ROADS DRY WEATHER ROADS
Heavy-duty ———— LANE 16 LANE Improved dirt ————
Medium-duty ———— LANE 16 LANE Unimproved dirt ————
Loose-surface, graded, or narrow hard-surface ————
U. S. Route State Route
USGS
Historical File
Topographic Division
SUMNER, MO.
N3937.5—W9307.5/7.5
EDITION OF 1949

THIS MAP COMPLIES WITH NATIONAL MAP ACCURACY STANDARDS
FOR SALE BY U. S. GEOLOGICAL SURVEY, DENVER, COLORADO OR WASHINGTON 25, D. C.

JAN 7 1974

1200