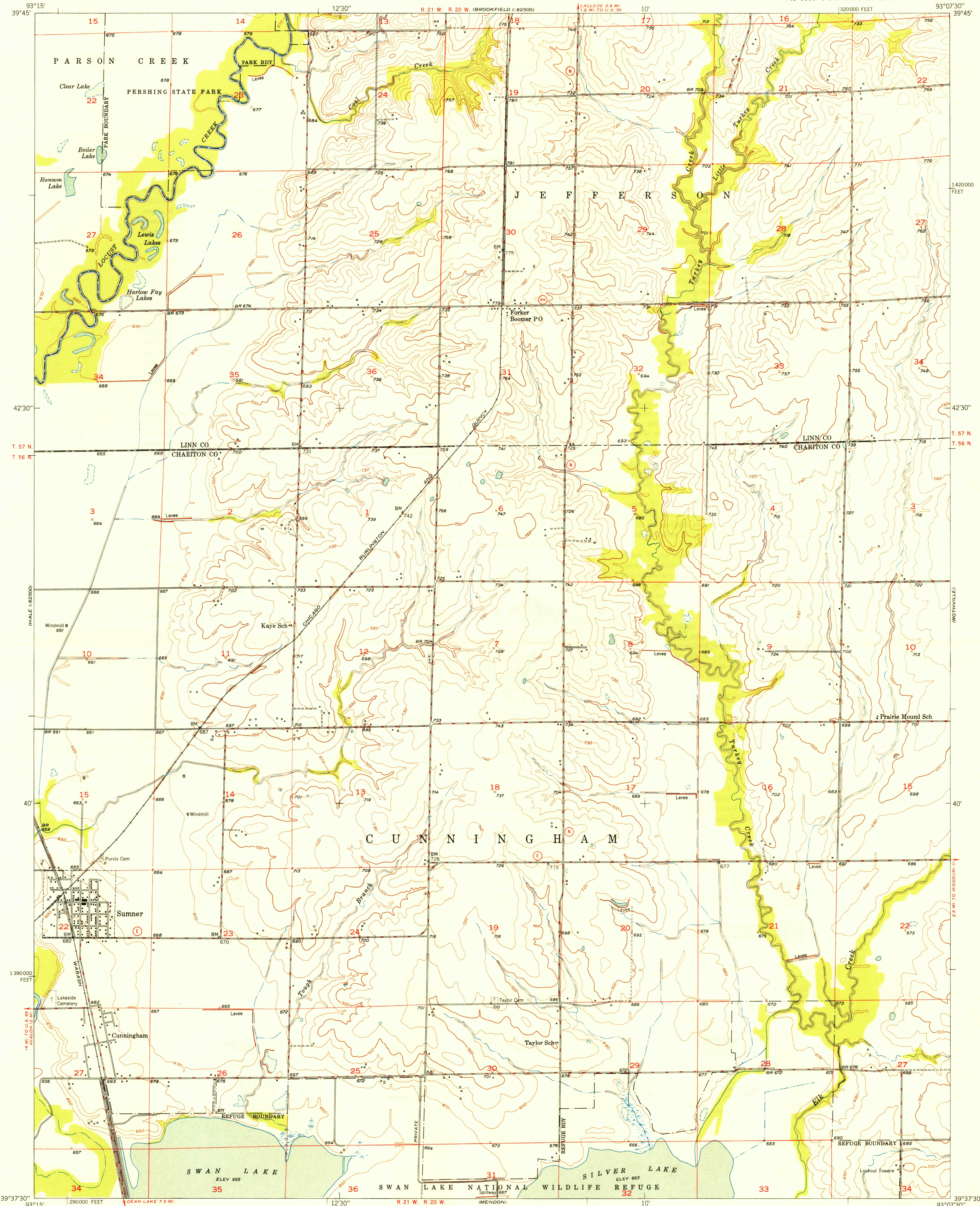


UNITED STATES  
DEPARTMENT OF THE INTERIOR  
GEOLOGICAL SURVEY

U. S. G. S.  
FILE COPY  
Inspection and Editing.

SUMNER QUADRANGLE  
MISSOURI  
7.5 MINUTE SERIES (TOPOGRAPHIC)



Maped, edited and published by the Geological Survey  
as part of the Department of the Interior program  
for the development of the Missouri River Basin  
Control by USGS and USC&GS  
Culture and drainage in part compiled from  
aerial photographs taken 1940  
Topography by plane-table methods 1949  
Polyconic projection. 1927 North American datum  
10,000-foot grid based on Missouri coordinate system,  
central zone

TRUE NORTH  
MAGNETIC NORTH  
APPROXIMATE MEAN  
DECLINATION, 1949

SCALE 1:24,000  
1 0 1000 2000 3000 4000 5000 6000 7000 FEET  
1 0 5 10 KILOMETER  
CONTOUR INTERVAL 10 FEET  
DATUM IS MEAN SEA LEVEL

USCS  
Historical File  
Topographic Division

ROAD CLASSIFICATION  
HARD-SURFACE ALL WEATHER ROADS DRY WEATHER ROADS  
Heavy-duty 4 LANE 18 LANE Improved dirt  
Medium-duty 4 LANE 18 LANE Unimproved dirt  
Loose-surface, graded, or narrow hard-surface  
U. S. Route State Route

THIS MAP COMPLIES WITH NATIONAL MAP ACCURACY STANDARDS  
FOR SALE BY U. S. GEOLOGICAL SURVEY, DENVER, COLORADO OR WASHINGTON 25, D. C.

U. S. G. S.  
FILE COPY  
Inspection and Editing.

SUMNER, MO.  
N3937.5-W9307.5  
EDITION OF 1950