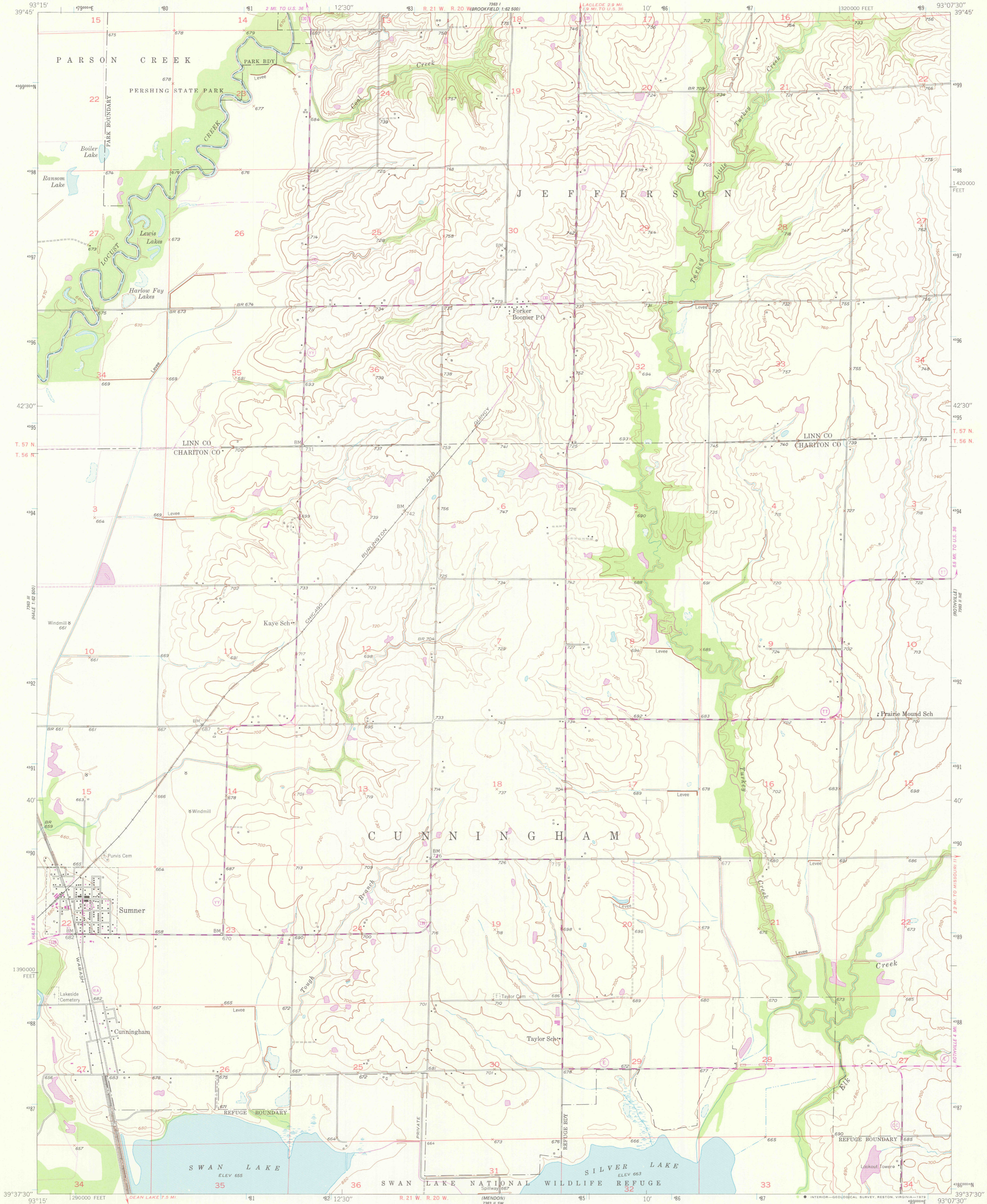


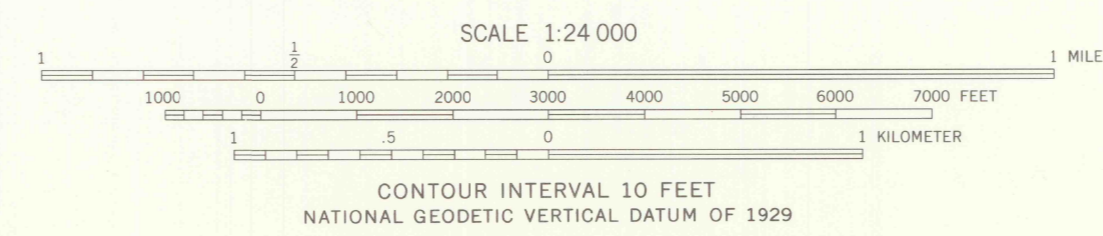
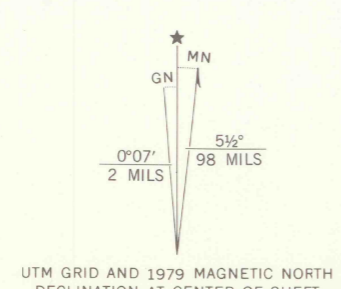
UNITED STATES  
DEPARTMENT OF THE INTERIOR  
GEOLOGICAL SURVEY



SUMNER QUADRANGLE  
MISSOURI  
7.5 MINUTE SERIES (TOPOGRAPHIC)



Mapped, edited and published by the Geological Survey as part of the Department of the Interior program for the development of the Missouri River Basin  
Control by USGS and USC&GS  
Culture and drainage in part compiled from aerial photographs taken 1940  
Topography by plane-table methods 1949  
Polyconic projection. 1927 North American datum  
10,000-foot grid based on Missouri coordinate system, central zone  
1000-meter Universal Transverse Mercator grid ticks, zone 15, shown in blue  
There may be private inholdings within the boundaries of the National or State reservations shown on this map  
Revisions shown in purple compiled from aerial photographs taken 1977. Map edited 1979. This information not field checked



ROAD CLASSIFICATION

Primary highway, hard surface	Light-duty road, hard or improved surface
Secondary highway, hard surface	Unimproved road
Interstate Route	U. S. Route
	State Route

THIS MAP COMPLIES WITH NATIONAL MAP ACCURACY STANDARDS FOR SALE BY U. S. GEOLOGICAL SURVEY, DENVER, COLORADO 80225, OR RESTON, VIRGINIA 22092 AND THE DIVISION OF RESEARCH AND TECHNICAL INFORMATION, MISSOURI DEPARTMENT OF NATURAL RESOURCES, ROLLA, MISSOURI 65401 A FOLDER DESCRIBING TOPOGRAPHIC MAPS AND SYMBOLS IS AVAILABLE ON REQUEST

USCS  
Historical File  
Topographic Division

SUMNER, MO.  
N3937.5-W9307.5/7.5

EDITION OF 1949  
PHOTOREVISED 1979  
AMS 7365 II NW-SERIES V879

JUN 18 1979

2950