

(Blue Springs)

DEPARTMENT OF THE INTERIOR
U. S. GEOLOGICAL SURVEY

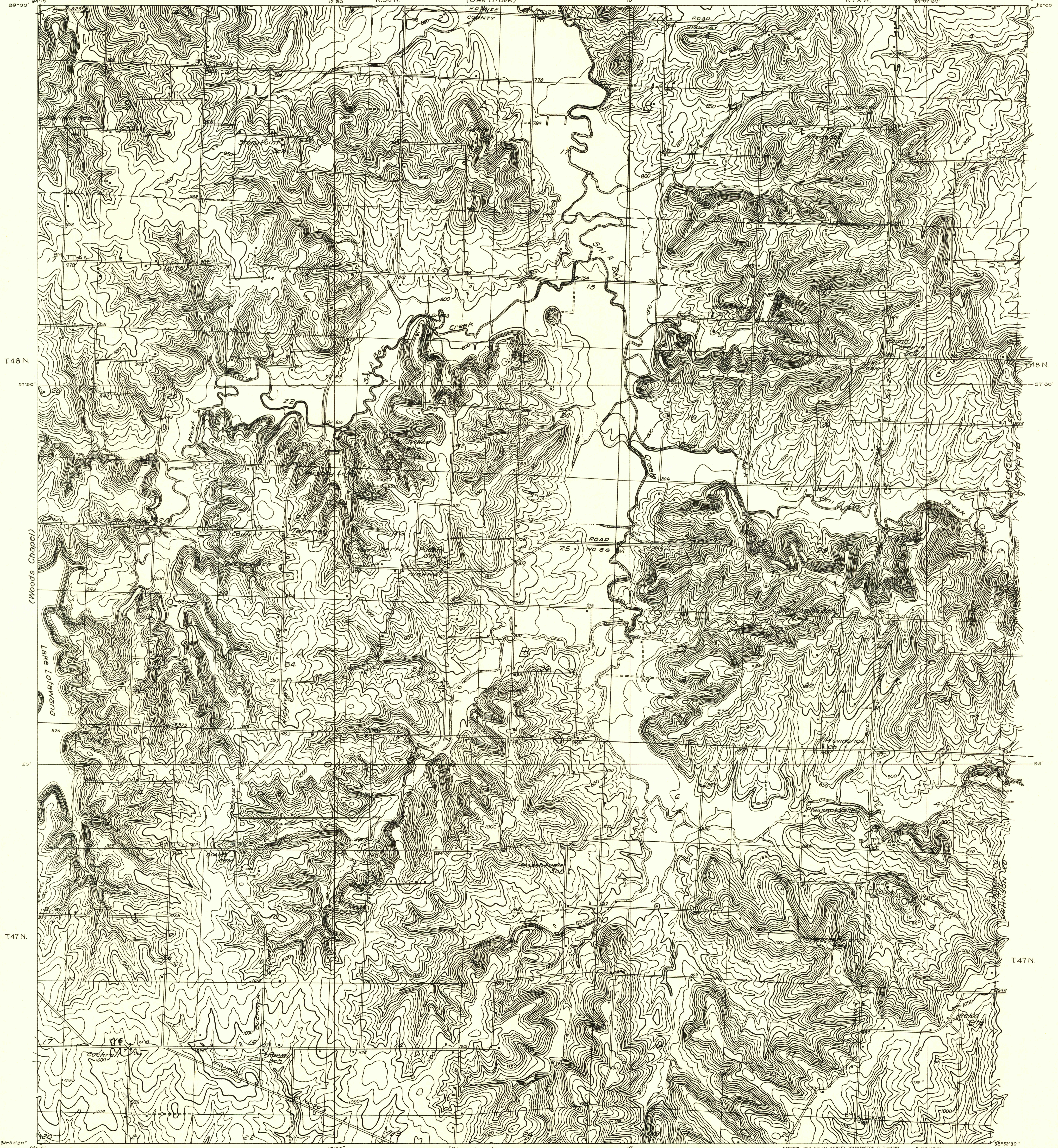
STATE OF MISSOURI
GEOLOGICAL SURVEY AND WATER RESOURCES
H. A. BUEHLER, STATE GEOLOGIST
(Oak Grove)

MISSOURI
(JACKSON COUNTY)
TARSNEY QUADRANGLE
R. 29 W.

U.S.G.S.
FILE COPY
TOPOGRAPHIC DIVISION

Advance sheet
Subject to correction

(Independence)

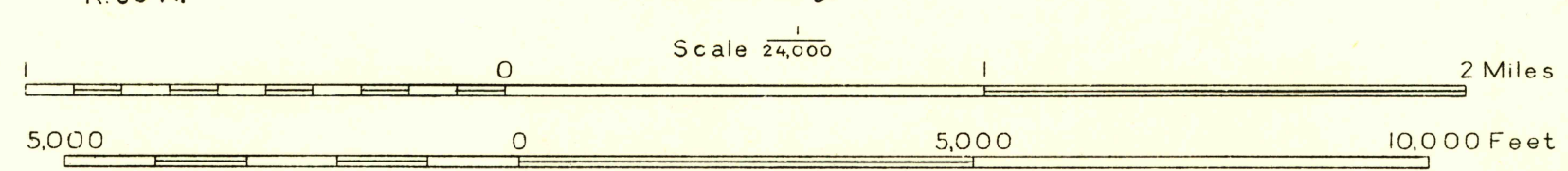


(Woods Chapel)

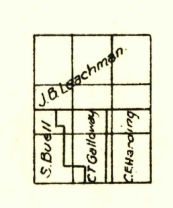
(Pleasant Hill)

Glenn S. Smith, Division Engineer
Topography by J.B. Leachman,
C.E. Harding, C.T. Galloway and S. Buell.
Control by U. S. Geological Survey
Surveyed in 1935

TRUE NORTH
MAGNETIC NORTH
APPROXIMATE MEAN
DECLINATION 1935



Contour interval 10 feet
Datum is mean sea level



U.S.G.S.
Historical File
Topographic Division
Polyconic projection, 1927 North American datum

U.S.G.S.
FILE COPY
TOPOGRAPHIC DIVISION

TARSNEY, MO.