

MONTROSE 19 MI.
TABERVILLE 9.6 MI.

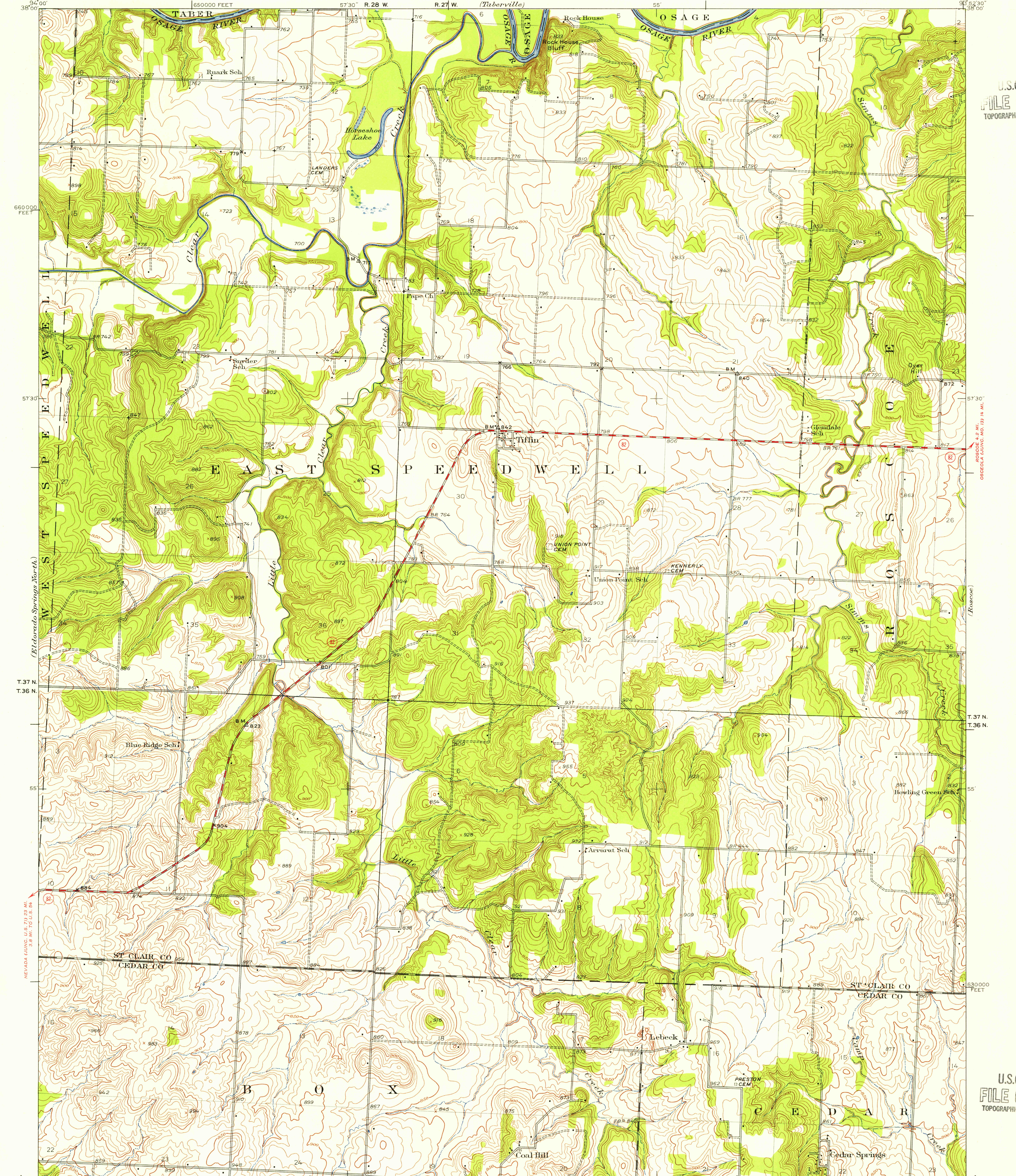
UNITED STATES
DEPARTMENT OF THE INTERIOR
GEOLOGICAL SURVEY

STATE OF MISSOURI
GEOLOGICAL SURVEY AND WATER RESOURCES

MISSOURI
TIFFIN QUADRANGLE

U.S.G.S.
FILE COPY
TOPOGRAPHIC DIVISION

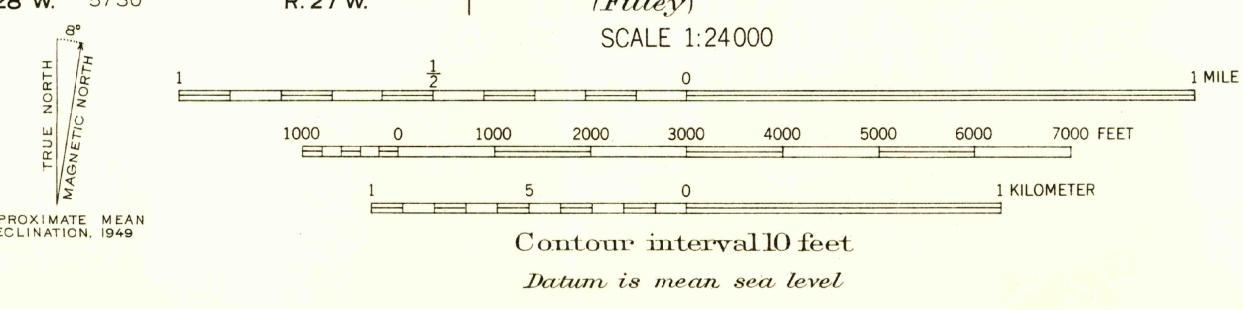
U.S.G.S.
FILE COPY
TOPOGRAPHIC DIVISION



39°00' 38°00' 650000 FEET 57°30' R. 28 W. R. 27 W. (Taberville) 55' 670000 FEET 57°30' 93°52'30" 93°52'00" (Rockville)

650000 FEET 57°30' 93°52'30" 93°52'00" (Monroe Springs)

Topography by C.D. Mitchell and E.J. Fennell
Surveyed in 1934 and 1937
Partial highway revision 1949



ROAD CLASSIFICATION
Heavy-duty 4 LANE 16 LANE Light-duty
Medium-duty 4 LANE 16 LANE Unimproved dirt
U.S. Route State Route

USCS
Historical File
Topographic Division

Polyconic projection, 1927 North American datum
10000 foot grid based on Missouri (West)
rectangular coordinate system

TIFFIN MO.
N 3752.5 - W 9352.5 / 7.5
1949

FOR SALE BY U.S. GEOLOGICAL SURVEY, FEDERAL CENTER, DENVER, COLORADO OR WASHINGTON 25, D.C.
AND BY THE MISSOURI GEOLOGICAL SURVEY, ROLLA, MISSOURI
A FOLDER DESCRIBING TOPOGRAPHIC MAPS AND SYMBOLS IS AVAILABLE ON REQUEST

AUG 10 1955

1605