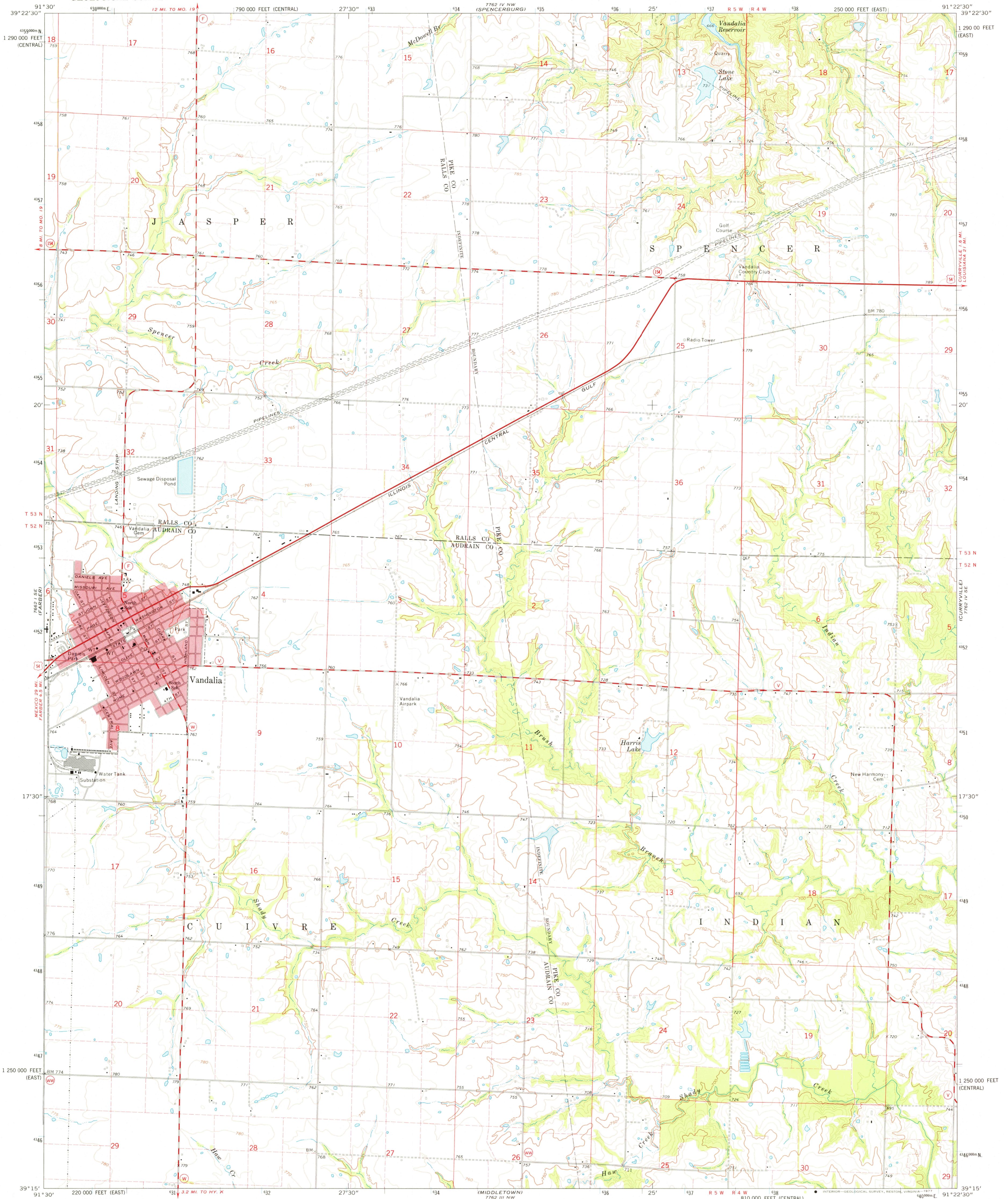
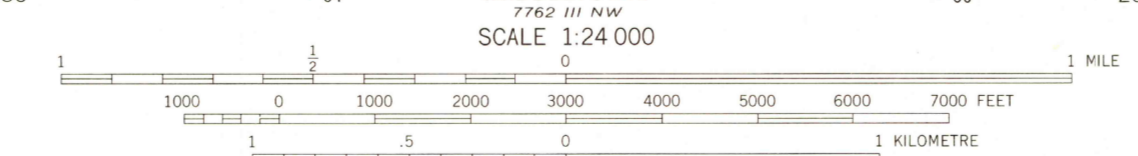
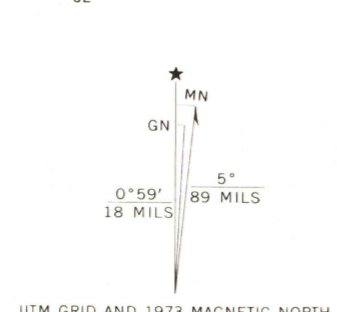


UNITED STATES
DEPARTMENT OF THE INTERIOR
GEOLOGICAL SURVEY

VANDALIA QUADRANGLE
MISSOURI
7.5 MINUTE SERIES (TOPOGRAPHIC)
SW 4 VANDALIA 15' QUADRANGLE

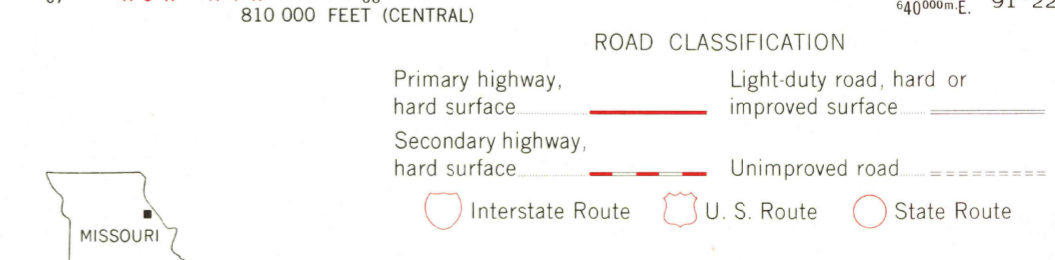


Mapped, edited, and published by the Geological Survey
Control by USGS and NOS/NOAA
Topography by photogrammetric methods from aerial photographs taken 1972. Field checked 1973
Projection: Missouri coordinate system, east zone (transverse Mercator)
10,000-foot grid ticks based on Missouri coordinate system, east and central zones
1000-meter Universal Transverse Mercator grid ticks, zone 15, shown in blue. 1927 North American datum
Red tint indicates area in which only landmark buildings are shown
Fine red dashed lines indicate selected fence and field lines where generally visible on aerial photographs. This information is unchecked



CONTOUR INTERVAL 10 FEET
DOTTED LINES REPRESENT 5-FOOT CONTOURS
NATIONAL GEODETIC VERTICAL DATUM OF 1929

THIS MAP COMPLIES WITH NATIONAL MAP ACCURACY STANDARDS
FOR SALE BY U. S. GEOLOGICAL SURVEY, DENVER, COLORADO 80225, OR RESTON, VIRGINIA 22092
AND BY THE DIVISION OF RESEARCH AND TECHNICAL INFORMATION
MISSOURI DEPARTMENT OF NATURAL RESOURCES, ROLLA, MISSOURI 65401
A FOLDER DESCRIBING TOPOGRAPHIC MAPS AND SYMBOLS IS AVAILABLE ON REQUEST



RETURN TO:
USGS MMD HISTORICAL MAP ARCHIVES
1973
AMS 7562 IV SW-SERIES V879

VANDALIA, MO.
SW 4 VANDALIA 15' QUADRANGLE
N3915-W9122.5/7.5

3600
AUG 15 1977