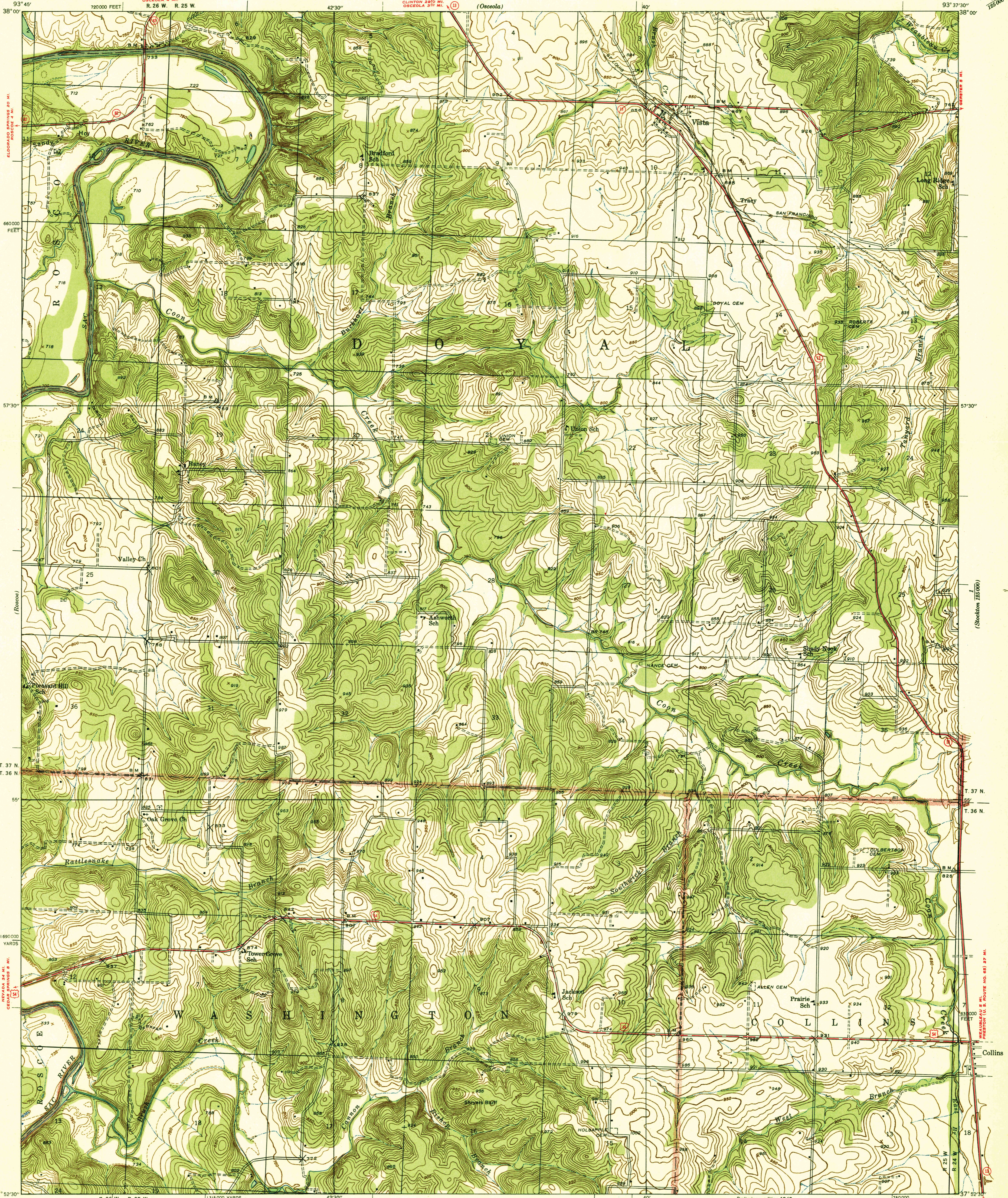
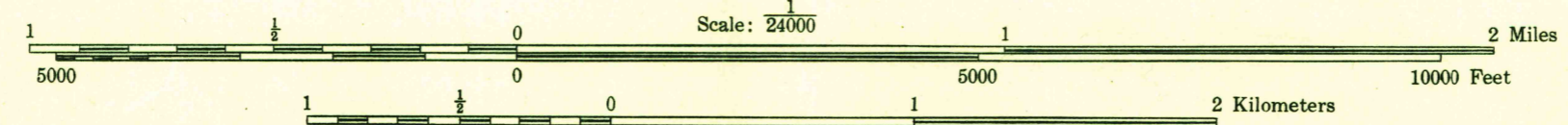
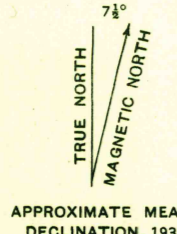


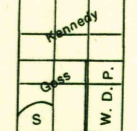
U.S.G.S.
FILE COPY



Glenn S. Smith, Division Engineer
Topography by Daniel Kennedy, W. D. Phillips,
C. E. Goss, and C. L. Salley
Surveyed in 1938



Contour interval 10 feet
5 foot contours added in dashed lines
Datum is mean sea level



USGS
Historical File
Topographic Division

Polyconic projection. 1927 North American datum
5000 yard grid based on U. S. zone system, D
10000 foot grid based on Missouri (West)
rectangular coordinate system

VISTA, MO.
N 3752.5-W 9337.5/7.5

U. S. G.
FILE COPY

APR 26 1940