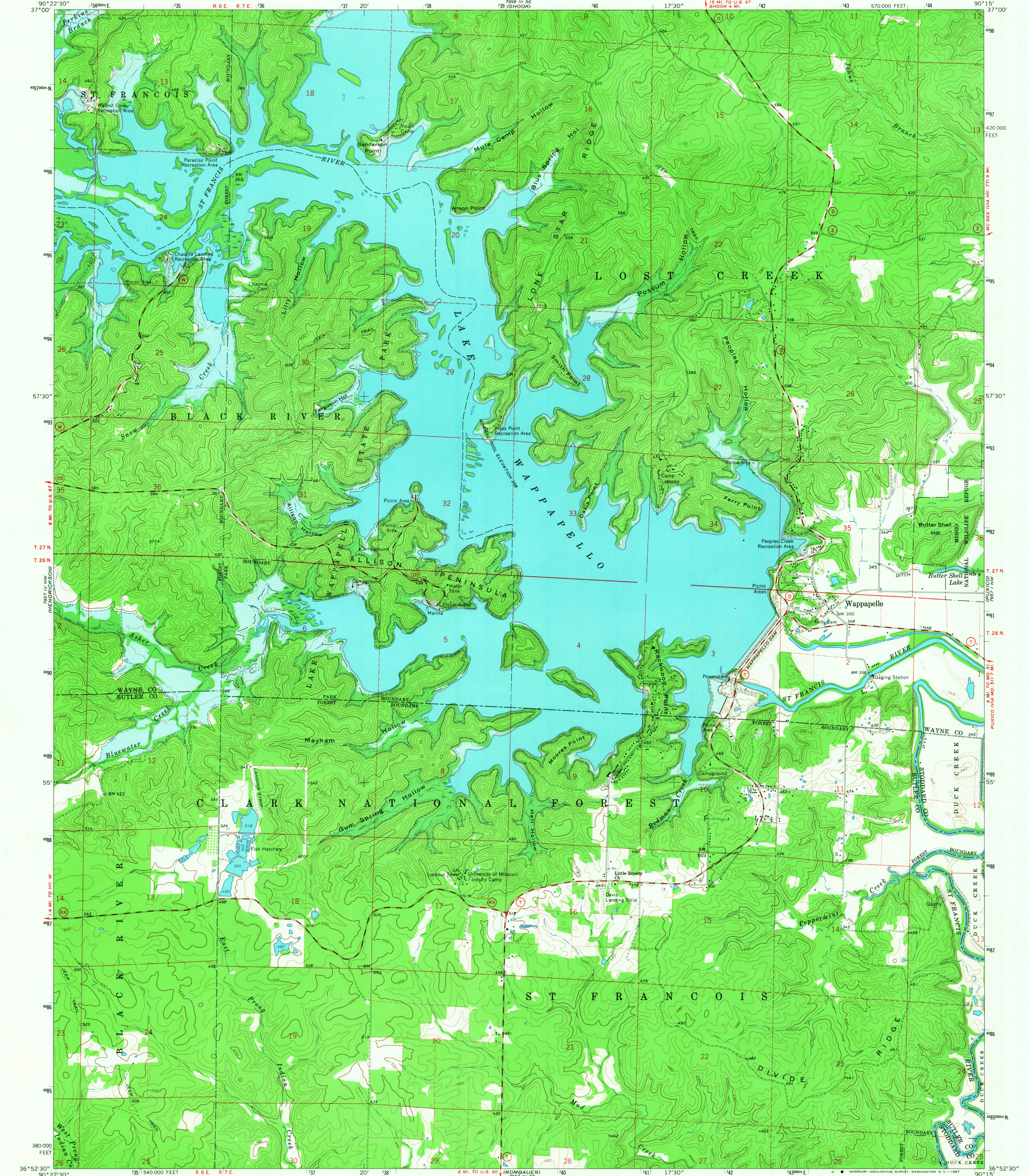
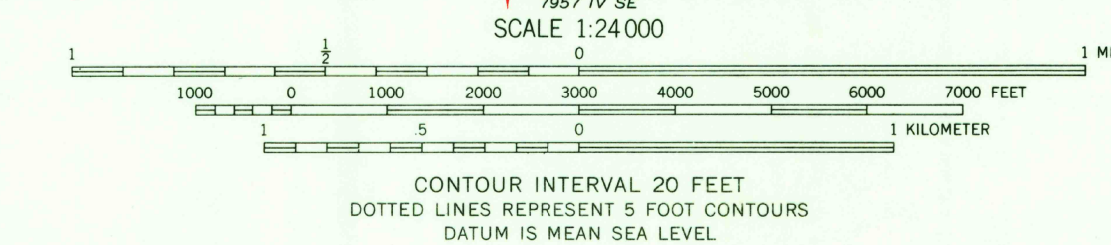
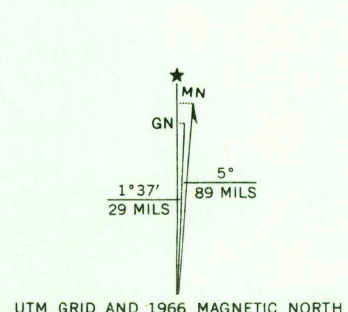


UNITED STATES
DEPARTMENT OF THE INTERIOR
GEOLOGICAL SURVEY

WAPPAPELLO QUADRANGLE
MISSOURI
7.5 MINUTE SERIES (TOPOGRAPHIC)
NE/4 POPLAR BLUFF 15' QUADRANGLE



Mapped, edited, and published by the Geological Survey
Control by USGS and USC&GS
Topography by photogrammetric methods from aerial
photographs taken 1964. Field checked 1966
Polyconic projection. 1927 North American datum
10,000-foot grid based on Missouri coordinate system, east zone
1000-meter Universal Transverse Mercator grid ticks,
zone 15, shown in blue
Areas covered by dashed light-blue pattern
are subject to controlled inundation
Fine red dashed lines indicate selected fence and field lines where
generally visible on aerial photographs. This information is unchecked



THIS MAP COMPLIES WITH NATIONAL MAP ACCURACY STANDARDS
FOR SALE BY U.S. GEOLOGICAL SURVEY, DENVER, COLORADO 80225, OR WASHINGTON, D. C. 20242
AND BY THE MISSOURI GEOLOGICAL SURVEY, ROLLA, MISSOURI 65401
A FOLDER DESCRIBING TOPOGRAPHIC MAPS AND SYMBOLS IS AVAILABLE ON REQUEST

USGS
Historical File
Topographic Division

ROAD CLASSIFICATION
Medium-duty — Light-duty
Unimproved dirt —
State Route

U.S.G.S.
FILE COPY
TOPOGRAPHIC DIVISION

MISSOURI
QUADRANGLE LOCATION

WAPPAPELLO, MO.
NE/4 POPLAR BLUFF 15' QUADRANGLE
N3652.5—W9015.7.5
1966
AMS 7957 IV NE—SERIES V879

2735
JUN 1 1967