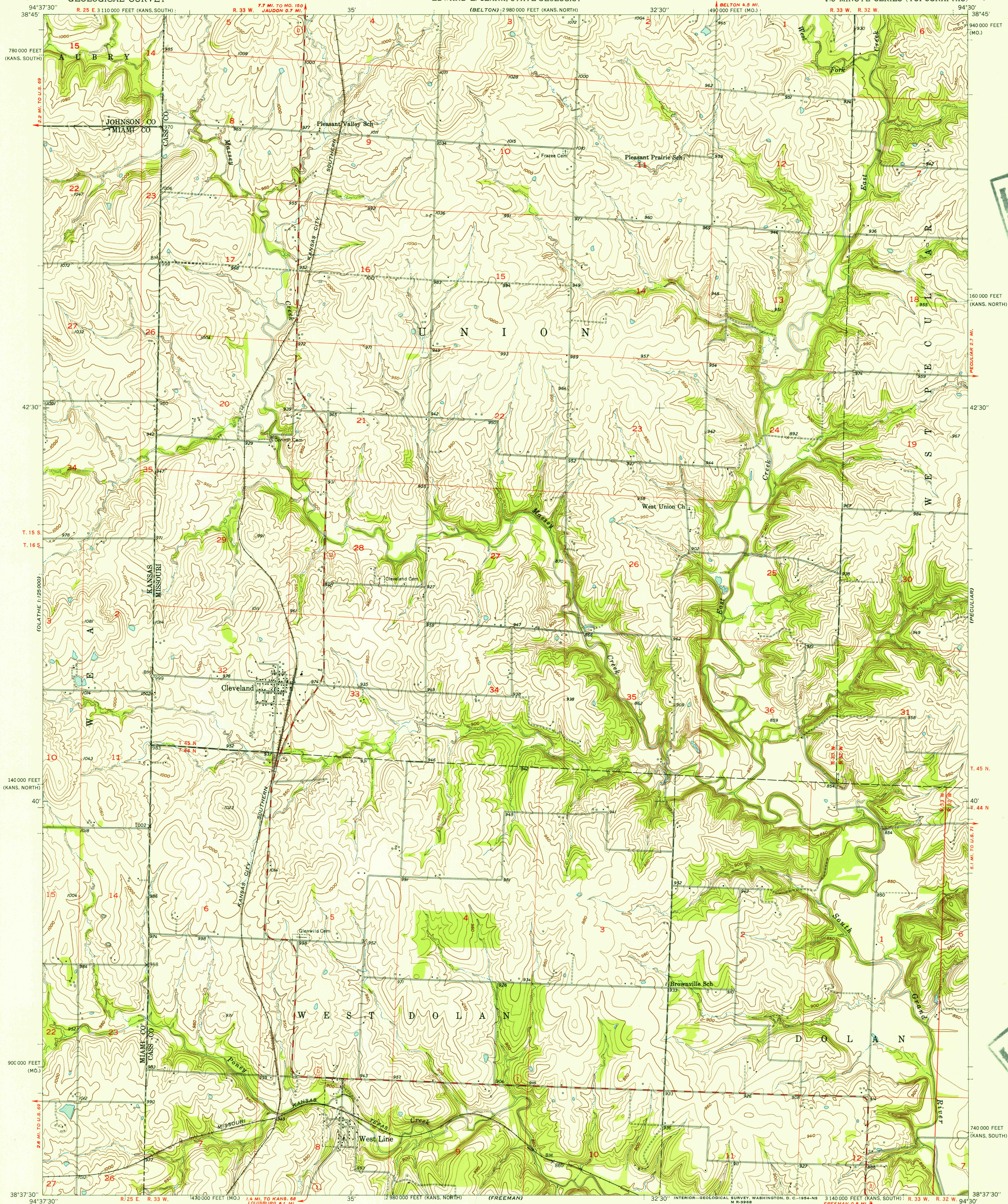


UNITED STATES  
DEPARTMENT OF THE INTERIOR  
GEOLOGICAL SURVEY

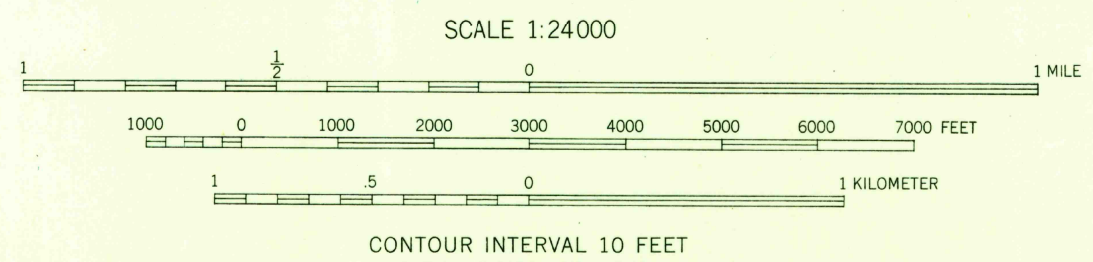
STATE OF MISSOURI  
GEOLOGICAL SURVEY AND WATER RESOURCES  
EDWARD L. CLARK, STATE GEOLOGIST

WEST LINE QUADRANGLE  
MISSOURI-KANSAS  
7.5 MINUTE SERIES (TOPOGRAPHIC)



Maped, edited, and published by the Geological Survey  
Control by USGS and USC&GS  
Topography from aerial photographs by Kelsh plotter  
Aerial photographs taken 1947-1948. Field check 1953  
Polyconic projection. 1927 North American datum  
10,000-foot grids based on Missouri coordinate system,  
west zone and Kansas coordinate system, north and south zones

TRUE NORTH  
MAGNETIC NORTH  
APPROXIMATE MEAN  
DECLINATION, 1953



ROAD CLASSIFICATION  
Heavy-duty... 4 LANE IS LANE Light-duty...  
Medium-duty... 4 LANE IS LANE Unimproved dirt...  
U. S. Route State Route

THIS MAP COMPLIES WITH NATIONAL MAP ACCURACY STANDARDS  
FOR SALE BY U. S. GEOLOGICAL SURVEY, FEDERAL CENTER, DENVER, COLORADO OR WASHINGTON 25, D. C.  
BY THE STATE GEOLOGICAL SURVEY, LAWRENCE, KANSAS  
AND BY THE MISSOURI GEOLOGICAL SURVEY, ROLLA, MISSOURI  
A FOLDER DESCRIBING TOPOGRAPHIC MAPS AND SYMBOLS IS AVAILABLE ON REQUEST

USGS  
Historical File  
Topographic Division

WEST LINE, MO.-KANS.  
N 3837.5-W 9430.7.5  
1953

FILE COPY

FILE COPY