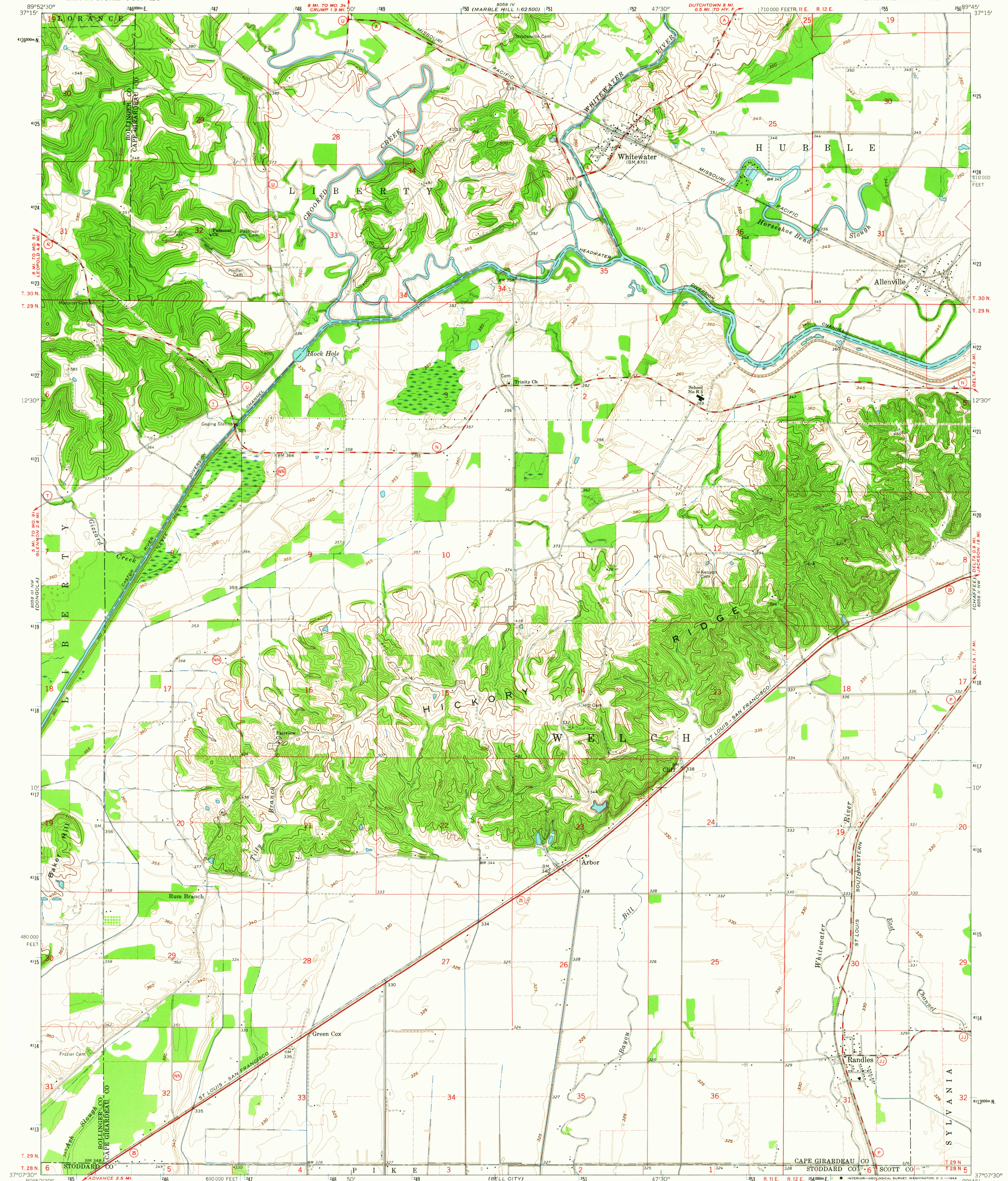
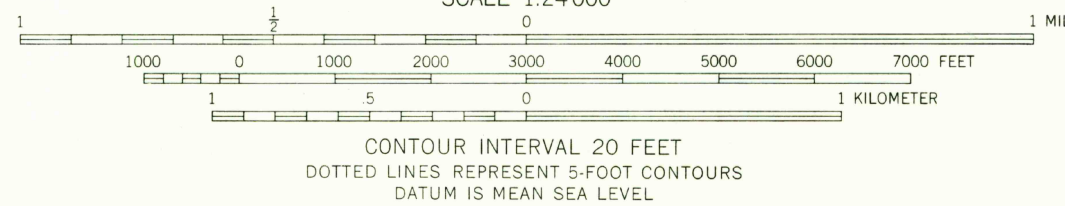
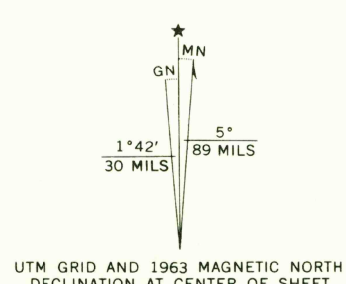


UNITED STATES  
DEPARTMENT OF THE INTERIOR  
GEOLOGICAL SURVEY

WHITEWATER QUADRANGLE  
MISSOURI  
7.5 MINUTE SERIES (TOPOGRAPHIC)  
NE/4 ADVANCE 15' QUADRANGLE



Mapped, edited, and published by the Geological Survey  
Control by USGS and USC&GS  
Topography by photogrammetric methods from aerial  
photographs taken 1962 and planetable surveys 1963  
Polyconic projection. 1927 North American datum  
10,000-foot grid based on Missouri coordinate system, east zone  
1000-meter Universal Transverse Mercator grid ticks,  
zone 16, shown in blue  
Where omitted, land lines have not been established  
Fine red dashed lines indicate selected fence and field lines where  
generally visible on aerial photographs. This information is unchecked



THIS MAP COMPLIES WITH NATIONAL MAP ACCURACY STANDARDS  
FOR SALE BY U.S. GEOLOGICAL SURVEY, DENVER 25, COLORADO OR WASHINGTON 25, D. C.  
AND BY THE MISSOURI GEOLOGICAL SURVEY, ROLLA, MISSOURI  
A FOLDER DESCRIBING TOPOGRAPHIC MAPS AND SYMBOLS IS AVAILABLE ON REQUEST



USGS  
Historical File  
Topographic Division  
ROAD CLASSIFICATION  
Heavy-duty ——— Light-duty ———  
Medium-duty - - - - - Unimproved dirt - - - - -  
○ State Route

U.S.G.S. FILE COPY  
TOPOGRAPHIC DIVISION  
WHITEWATER, MO.  
NE/4 ADVANCE 15' QUADRANGLE  
N3707.5-W8945/7.5  
1963  
AMS 8058 III NE-SERIES V879

2170

JUN 25 1964