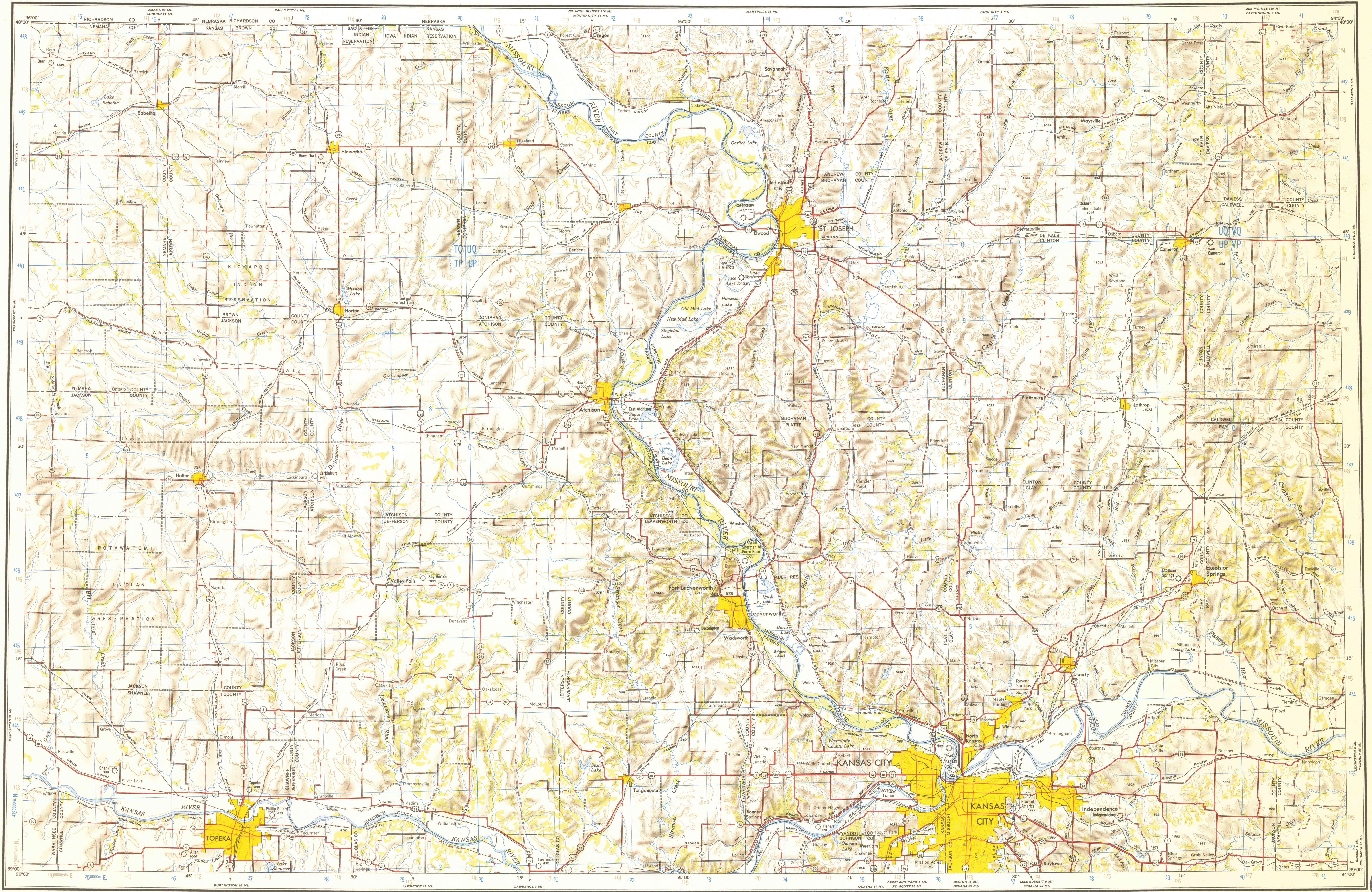


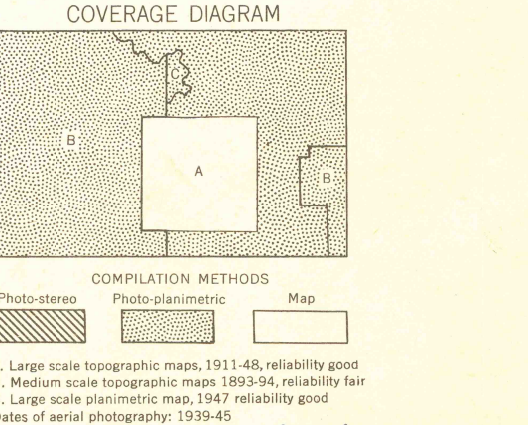
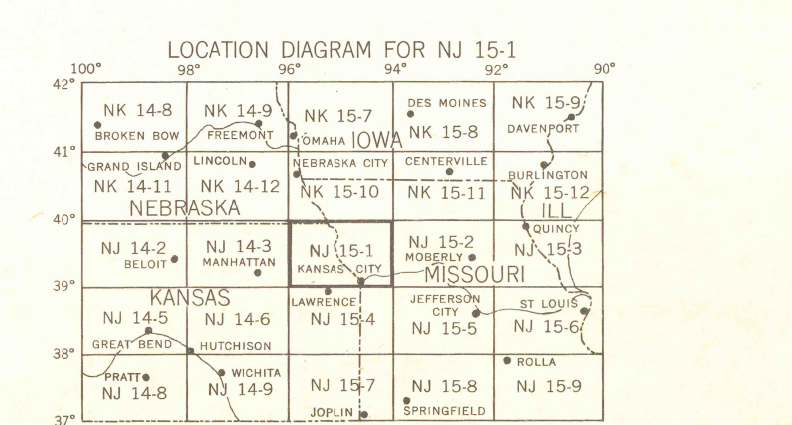
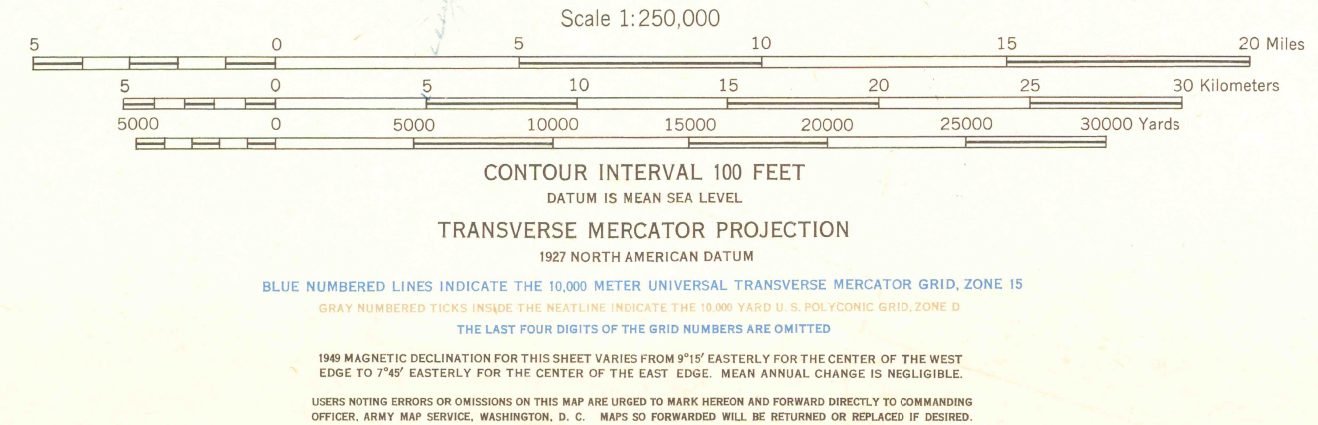
KANSAS CITY



AMS V502

AMS 1, 1950
Prepared under the direction of the Chief of Engineers by the Corps of Engineers, U. S. Army Map Service (AMS), Washington, D.C. Compiled in 1948 from United States Quadrangles 1:24,000, 1:25,000, 1:31,680, 1:62,500, 1:125,000, U.S. Geological Survey and Corps of Engineers, 1893-1948; County Highway Maps, 1936-42; and Intelligence data to 1948. Planimetric detail partially revised by photogrammetric methods. Relief taken from base maps, field notes and by sketching from aerial photographs. Aerial photographs 1939-45. Road, railroad, and aeromagnetic data verified by state authorities, 1948. Control by U.S. Coast and Geodetic Survey.

- LEGEND**
ROAD DATA 1950
- 1 Hard surface, heavy duty road, more than two lanes wide
 - 2 Hard surface, heavy duty road, two lanes
 - 3 Hard surface, medium duty road, more than two lanes wide
 - 4 Hard surface, medium duty road, two lanes
 - 5 Hard surface, medium duty road, less than two lanes wide
 - 6 Loose surface, graded and drained road, two lanes wide
 - 7 Old Dominion dirt road, trail
 - 8 Swell: Route markers: Federal; State
- POPULATED PLACES**
- 1 500,000 or over
 - 2 250,000 to 500,000
 - 3 100,000 to 250,000
 - 4 25,000 to 100,000
 - 5 1,000 to 25,000
 - 6 1,000 or less
- RAILROADS**
- Standard gauge: Single track, Multiple track
 - Narrow gauge
 - International boundary
 - State boundary
 - County boundary
 - Park and reservation
 - Spot elevation in feet
 - Military airfield
 - Municipal or commercial airfield
 - Auxiliary airfield
 - Seaplane base
 - Seaplane anchorage
 - Woodland
 - Intermittent stream
 - Swamp, marsh
 - Break: Limit of danger line
 - Rocks: Beach; Wharf; pier
 - Foreshore flats



ARMY MAP SERVICE CORPS OF ENGINEERS 1:250,000

TO OBTAIN A STANDARD REFERENCE ON THIS SHEET TO NEAREST LEGAL METERS

GRID ZONE DESIGNATION	GRID EASTING	SAMPLE POINT	NEAREST LEGAL METERS
18U UP	150	150	150

TO OBTAIN A STANDARD REFERENCE ON THIS SHEET TO NEAREST LEGAL METERS

GRID ZONE DESIGNATION	GRID NORTHING	SAMPLE POINT	NEAREST LEGAL METERS
18U UP	4500	4500	4500

DATE OF AERIAL PHOTOGRAPHY: 1939-45

KANSAS CITY, UNITED STATES
1:250,000

*United States. Topo. 1:250,000.
sheet Kansas City,
cop. 1.*

