

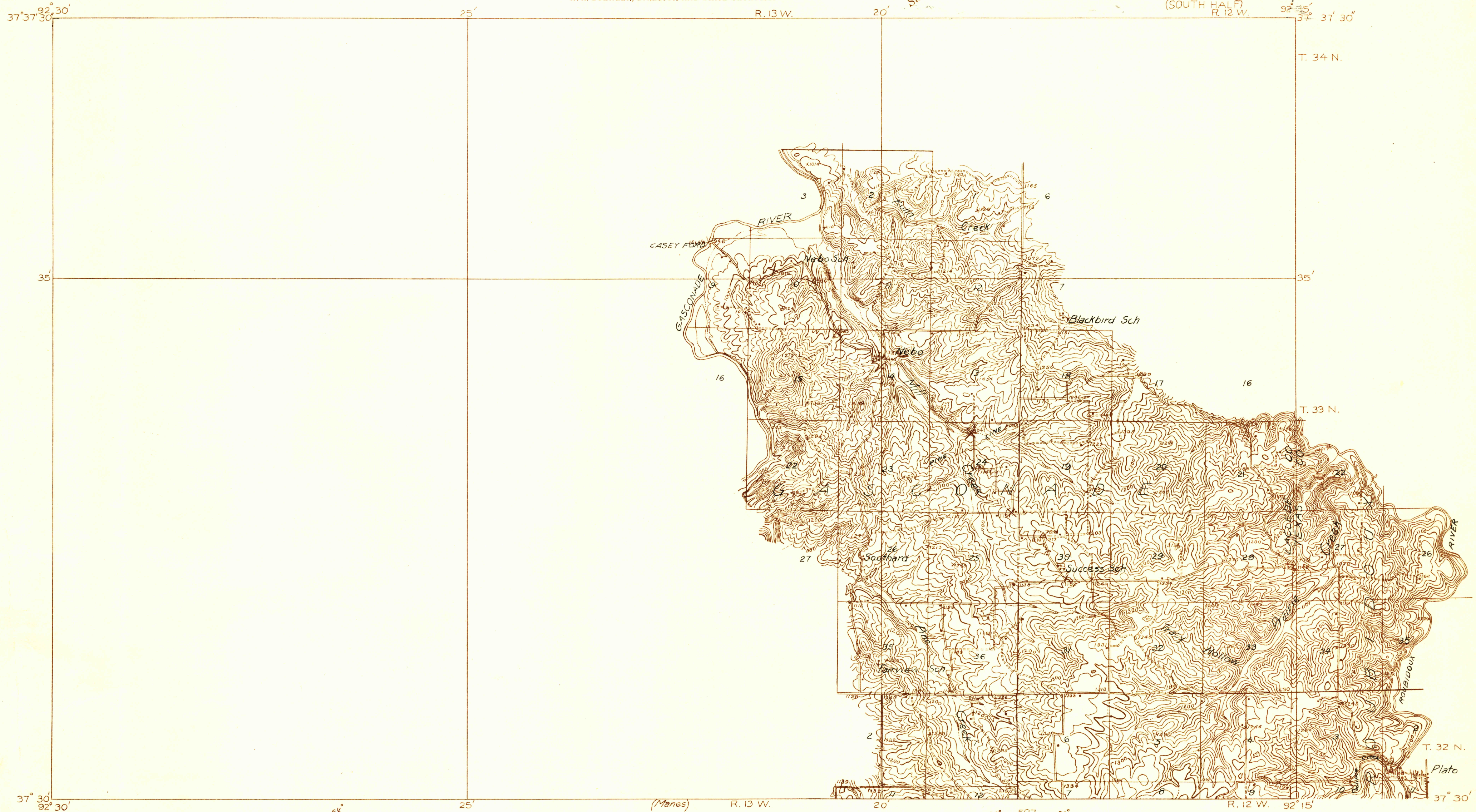
U. S. G. S.
FILE COPY
Inspection and Editing.

DEPARTMENT OF THE INTERIOR
U. S. GEOLOGICAL SURVEY

588-N-IV-W/2-
STATE OF MISSOURI
BUREAU OF GEOLOGY AND MINES
H. A. BUEHLER, DIRECTOR AND STATE GEOLOGIST

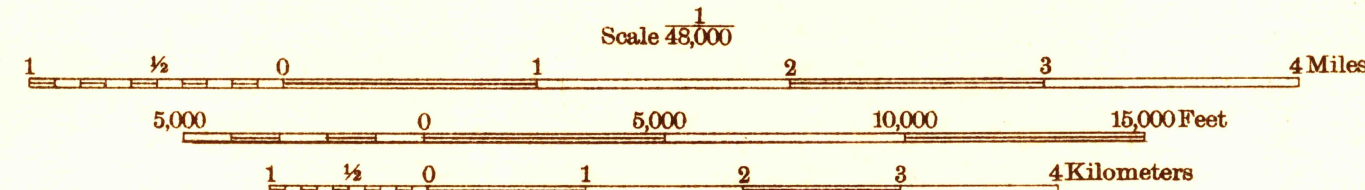
MISSOURI
DRYNOB QUADRANGLE
(SOUTH HALF)
R. 12 W. 92° 15' 37' 30"
R. 13 W. 92° 30' 37' 30"

*Advance sheet
Subject to correction*

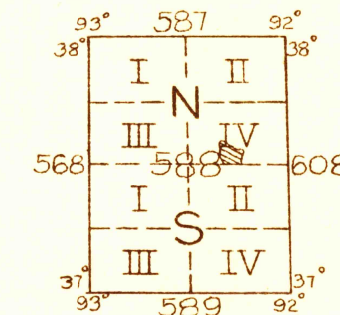


Glenn S. Smith, Division Engineer
Topography by A.W. Plushnick
Control by U. S. Geological Survey
Surveyed in 1931

6 1/2°
TRUE NORTH
MAGNETIC NORTH
APPROXIMATE MEAN
DECLINATION, 1931



Contour interval 20 feet
Datum is mean sea level



Polyconic projection. North American datum.

USGS
Historical File
Topographic Division

DRYNOB, MO.
(SOUTH HALF)