

DEPARTMENT OF THE INTERIOR  
U. S. GEOLOGICAL SURVEY

589-N-III-W/2  
STATE OF MISSOURI  
BUREAU OF GEOLOGY AND MINES  
H. A. BUEHLER, DIRECTOR AND STATE GEOLOGIST

Advance sheet  
Subject to correction

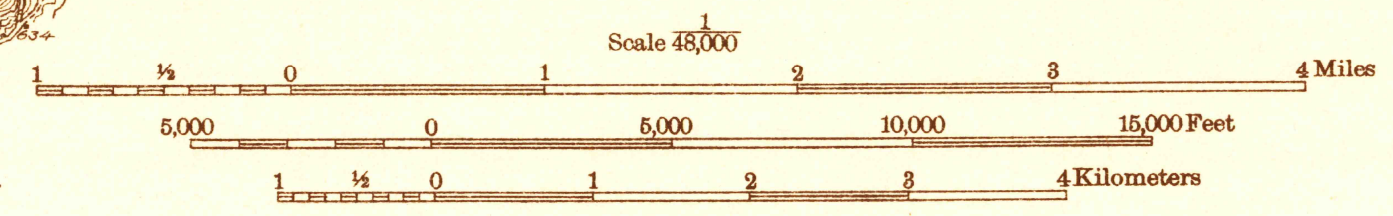
MISSOURI  
PROTEM QUADRANGLE  
(SOUTH HALF)

USGS  
Historical File  
Topographic Division

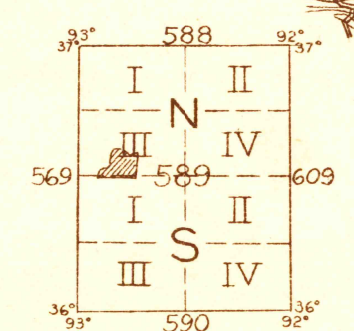


(Harrison)  
235000  
Glenn S. Smith, Division Engineer  
Topography by Frank W. Hughes  
Control by U. S. Geological Survey and  
U. S. Coast and Geodetic Survey  
Surveyed in 1931.

TRUE NORTH  
MAGNETIC NORTH  
APPROXIMATE MEAN  
DECLINATION, 1931



Contour interval 20 feet  
Datum is mean sea level



PROTEM, MO.

USGS  
Historical File  
Topographic Division

USGS Library  
Reston, VA.  
Topo Archive