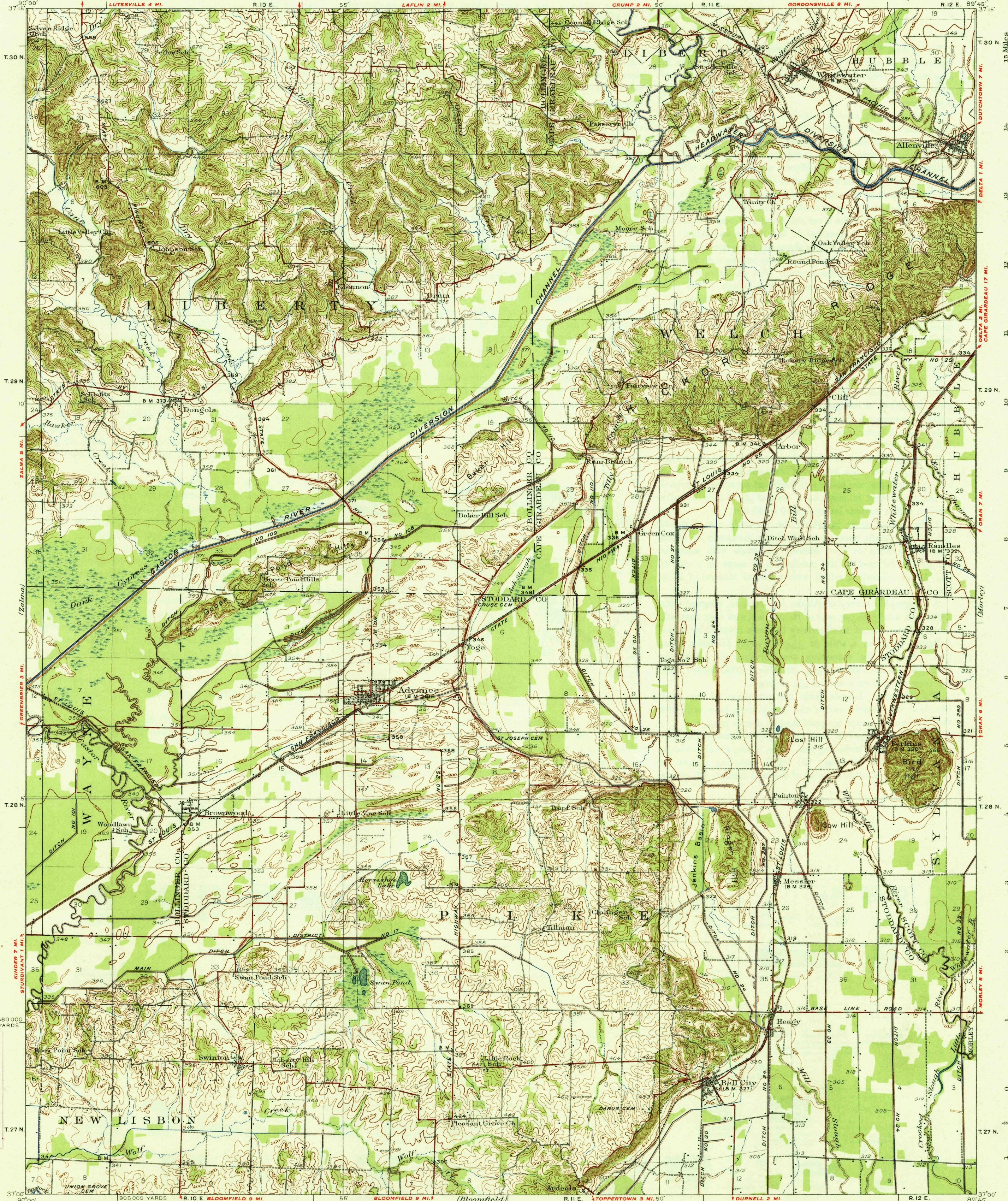


FILE COPY
Inspection and Editing

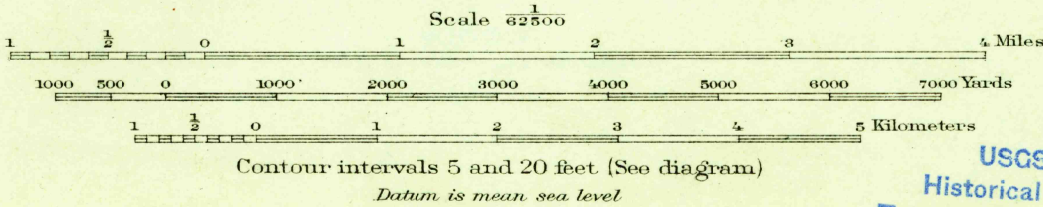
DEPARTMENT OF THE INTERIOR
U.S. GEOLOGICAL SURVEY

WAR DEPARTMENT
CORPS OF ENGINEERS, U.S. ARMY

MISSOURI
ADVANCE QUADRANGLE



Topography by J.A. Duck, H.P. Jones, and S.S. Evans
Culture and drainage in part compiled from aerial photographs
taken by Air Corps U.S. Army
Control by U.S. Geological Survey and
U.S. Coast and Geodetic Survey
Surveyed in 1931



Polyconic projection, North American datum
5000 yard grid based upon U.S. zone system, C

HARD IMPERVIOUSLY SURFACED ROADS
OTHER MAIN TRAVELED ROADS
1933

USCS
Historical File
Topographic Division

ADVANCE, MO.
Edition of 1934
2623:4400/49:

JUN 29 1934

(2930)

2930