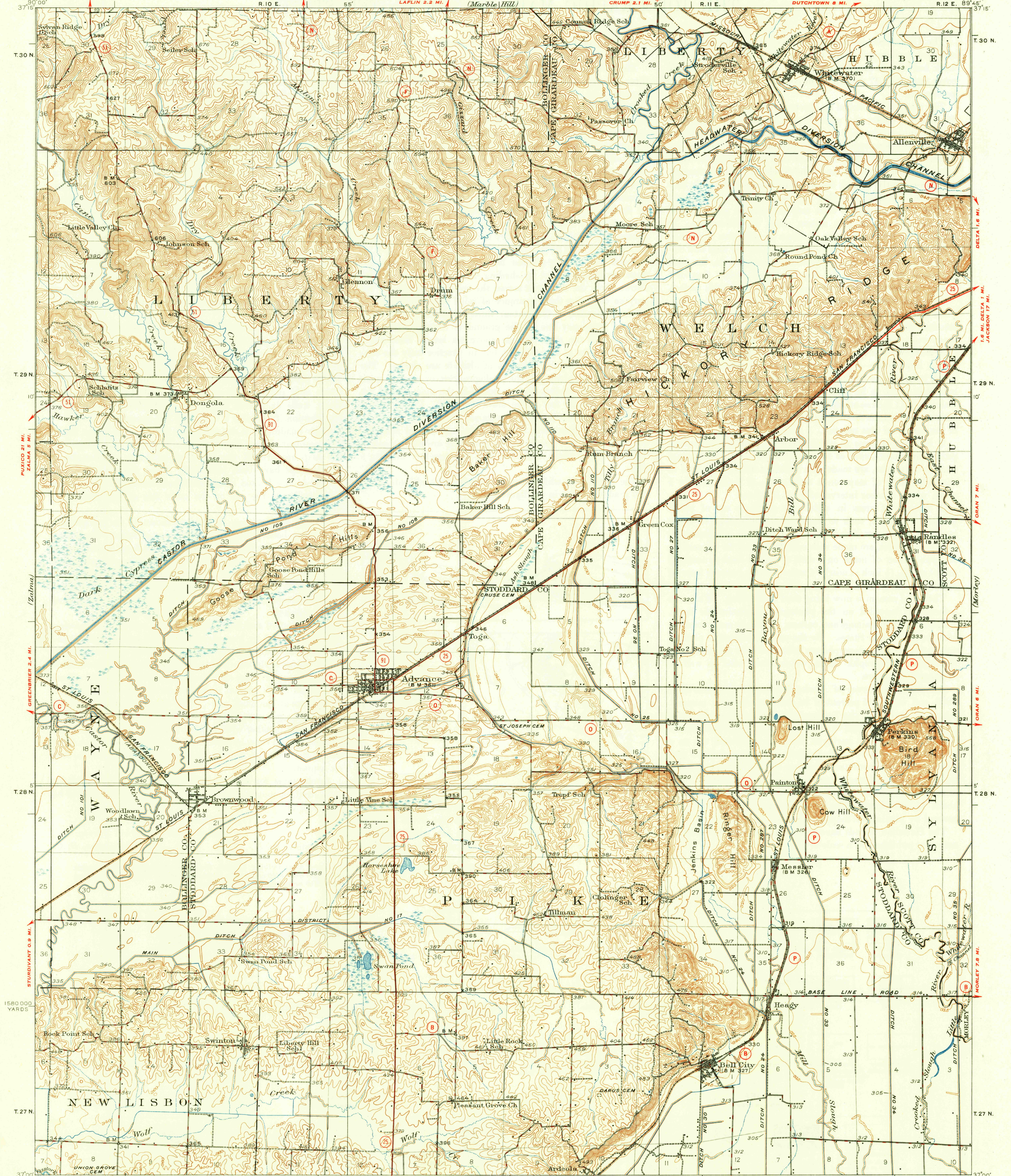


U. S. G. S.
FILE COPY
Inspection and Editing.

22 MI. TO U.S. 61
LUTESVILLE 3.8 MI.
UNITED STATES
DEPARTMENT OF THE INTERIOR
GEOLOGICAL SURVEY

UNITED STATES
DEPARTMENT OF THE ARMY
CORPS OF ENGINEERS
(Marble Hill)

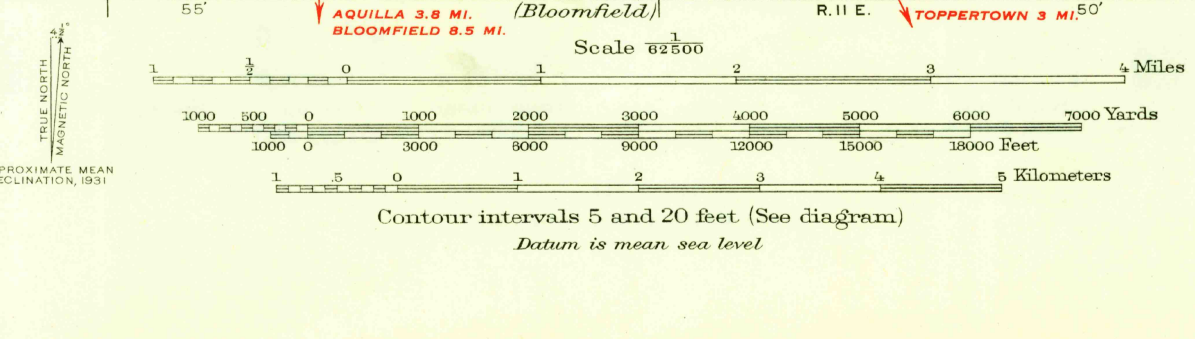
MISSOURI
ADVANCE QUADRANGLE
R. 12 E. 89° 45'



Topography by J.A. Duck, H.P. Jones, and S.S. Evans
Culture and drainage in part compiled from aerial photographs
taken by Air Corps U.S. Army
Control by U.S. Geological Survey and
U.S. Coast and Geodetic Survey
Surveyed in 1931
Culture revised in part 1949

ROAD CLASSIFICATION

HARD-SURFACE ALL WEATHER ROADS DRY WEATHER ROADS
Heavy-duty ———— +LANE+LANE Improved dirt
Medium-duty ———— +LANE+LANE Unimproved dirt
Loose-surface, graded, or narrow hard-surface ————
U. S. Route State Route



USCS
Historical File
Topographic Division

ADVANCE, MO.
Edition of 1934
reprinted 1950
with corrections
N3700-W8945/15

U. S. G. S.
FILE COPY
Inspection and Editing.