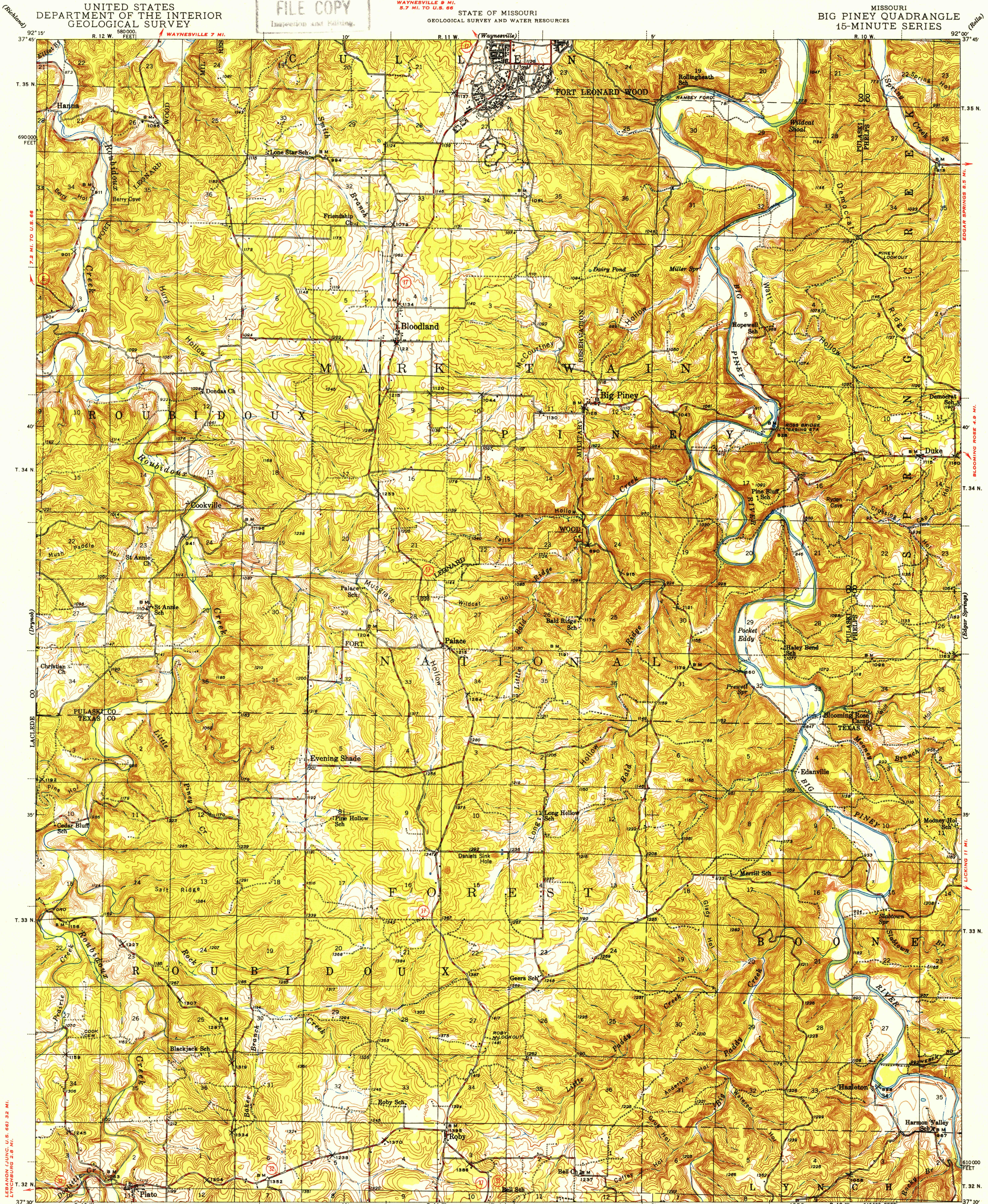


U.S.G.S.  
FILE COPY  
Inspection and Printing

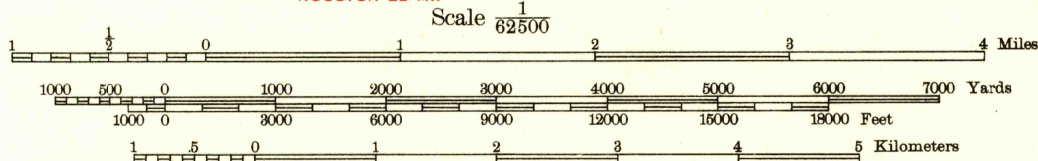
WAYNESVILLE 9 MI.  
5.7 MI. TO U.S. 66  
STATE OF MISSOURI  
GEOLOGICAL SURVEY AND WATER RESOURCES

MISSOURI  
BIG PINEY QUADRANGLE  
15-MINUTE SERIES



Topography by S. T. Penick, J. M. Rawls,  
Daniel Kennedy, J. A. Shumate, S. B. O'Hara,  
J. B. Leachman, E. J. Fennell, W. B. Brewer,  
L. E. Williams, R. G. Roberts, J. F. W. Smith,  
Max Zar, C. A. Killian, C. T. Galloway,  
and C. L. Stites  
Surveyed in 1932-1933, 1936, and 1940-1941

TRUE NORTH  
MAGNETIC NORTH  
APPROXIMATE MEAN  
DECLINATION, 1941



USGS  
Historical File  
Topographic Division

BIG PINEY, MO.  
1941  
N3730-W9200/15

**ROAD CLASSIFICATION**  
HARD-SURFACE ALL WEATHER ROADS DRY WEATHER ROADS  
Heavy-duty ——— LANE LANE Improved dirt ———  
Medium-duty ——— LANE LANE Unimproved dirt ———  
Loose-surface, graded, or narrow hard-surface ———  
U. S. Route State Route

FOR SALE BY U. S. GEOLOGICAL SURVEY, FEDERAL CENTER, DENVER, COLORADO OR WASHINGTON 25, D. C.  
AND BY THE MISSOURI GEOLOGICAL SURVEY, ROLLA, MISSOURI  
A FOLDER DESCRIBING TOPOGRAPHIC MAPS AND SYMBOLS IS AVAILABLE ON REQUEST

Polyconic projection. 1927 North American datum  
5000 yard grid based on U. S. zone system  
10000 foot grid based on Missouri (Central)  
rectangular coordinate system

2110