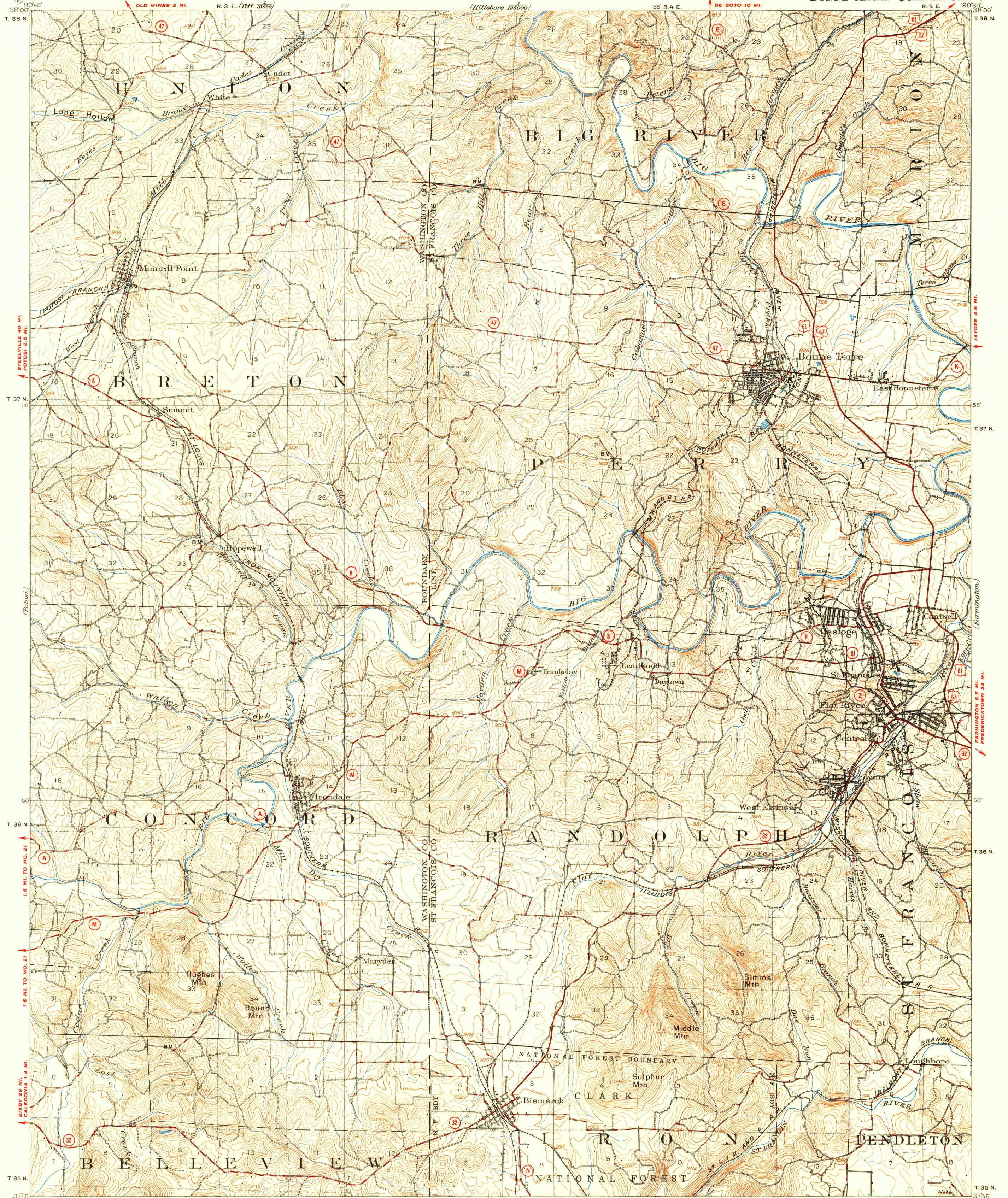


U. S. G. S.
FILE COPY
Inspection and Editing.

UNITED STATES
DEPARTMENT OF THE INTERIOR
GEOLOGICAL SURVEY

MISSOURI
BONNE TERRE QUADRANGLE

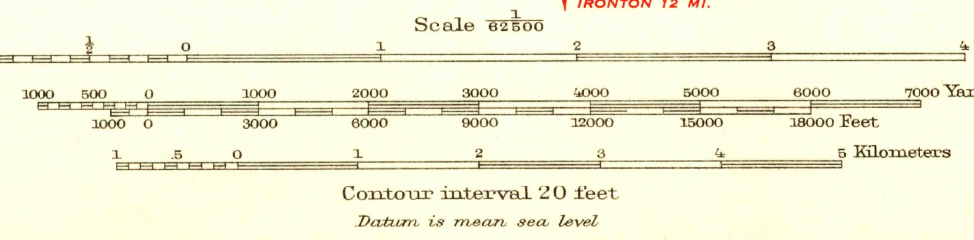
CRYSTAL CITY 19 MI.
HALIFAX 1.3 MI.



H. M. Wilson, Geographer in charge.
Topography by W. J. Lloyd.
Control by J. R. Ellis.
Surveyed in 1903.
Partial highway revision, 1949.

ROAD CLASSIFICATION
HARD-SURFACE ALL WEATHER ROADS DRY WEATHER ROADS
Heavy-duty 4 LANE 1 LANE Improved dirt
Medium-duty 4 LANE 1 LANE Unimproved dirt
Loose-surface, graded, or narrow hard-surface
U. S. Route State Route

APPROXIMATE MEAN
DECLINATION 1903
TRUE NORTH
MAGNETIC NORTH



USGS
Historical File
Topographic Division
FILE COPY
Inspection and Editing.

BONNE TERRE, MO.
Edition of 1905
reprinted 1950
with corrections
N3745-W9030/15

FOR SALE BY U.S. GEOLOGICAL SURVEY, FEDERAL CENTER, DENVER, COLORADO OR WASHINGTON 25, D.C.
A FOLDER DESCRIBING TOPOGRAPHIC MAPS AND SYMBOLS IS AVAILABLE ON REQUEST