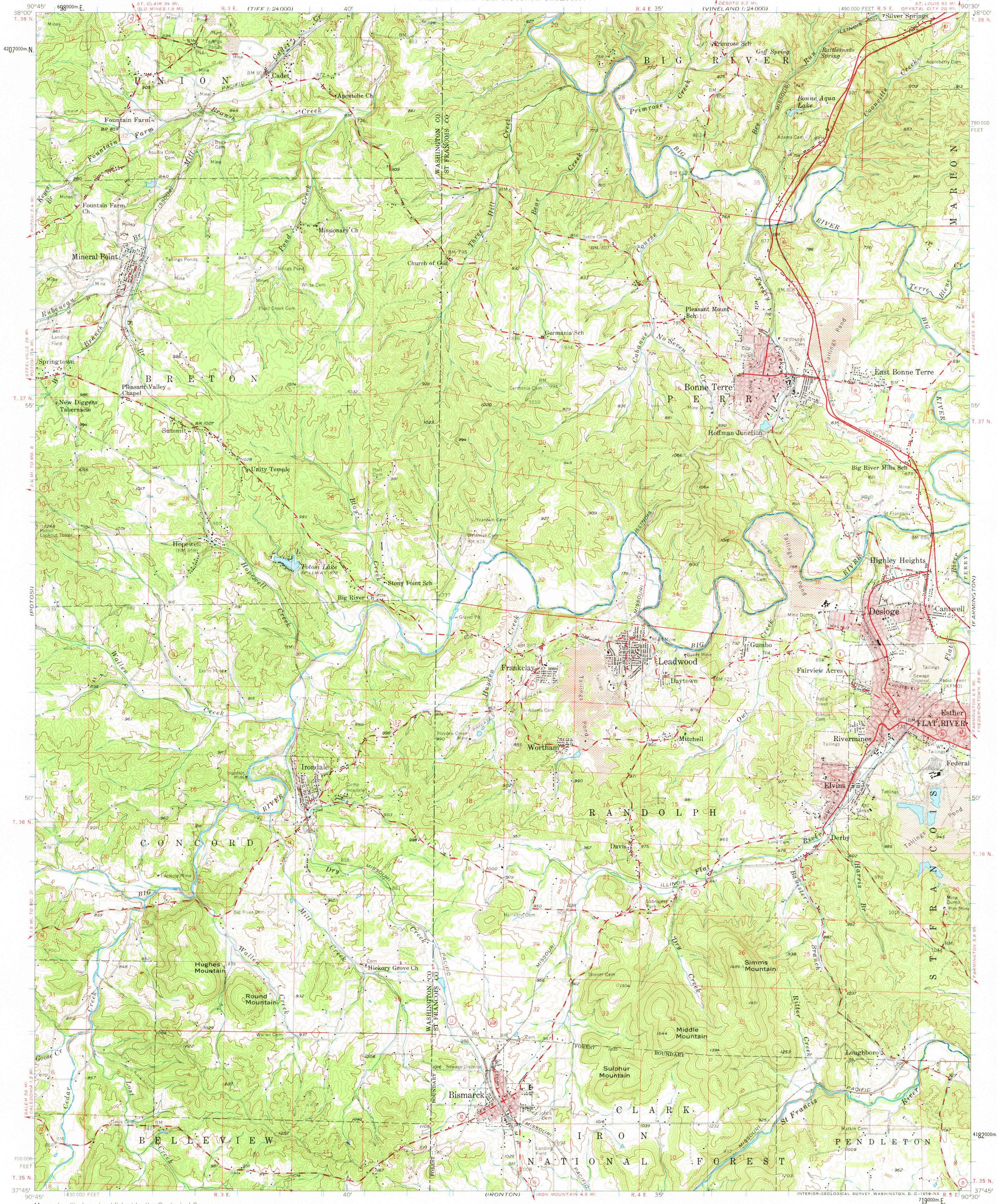


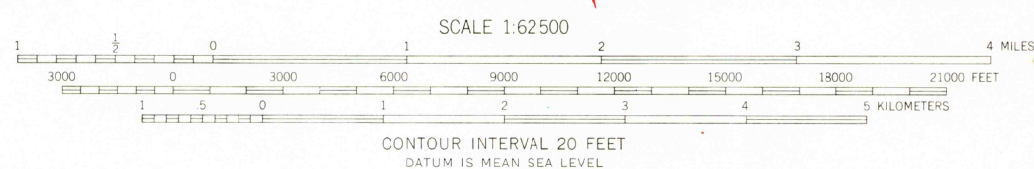
UNITED STATES  
DEPARTMENT OF THE INTERIOR  
GEOLOGICAL SURVEY

STATE OF MISSOURI  
GEOLOGICAL SURVEY AND WATER RESOURCES  
THOMAS R. BEVERIDGE, STATE GEOLOGIST

BONNE TERRE QUADRANGLE  
MISSOURI  
15 MINUTE SERIES (TOPOGRAPHIC)



Mapped, edited, and published by the Geological Survey  
Control by USGS and USC&GS  
Compiled in 1959 from 1:24,000-scale maps of Bonne Terre,  
Mineral Point, Irondale, and Flat River 7.5 minute  
quadrangles, surveyed 1958  
Topography from aerial photographs by photogrammetric methods  
Aerial photographs taken 1954  
Polyconic projection. 1927 North American datum  
10,000-foot grid based on Missouri coordinate system, east zone  
1000-meter Universal Transverse Mercator grid ticks,  
zone 15, shown in blue  
Red tint indicates areas in which only  
landmark buildings are shown



THIS MAP COMPLIES WITH NATIONAL MAP ACCURACY STANDARDS  
FOR SALE BY U. S. GEOLOGICAL SURVEY, DENVER 25, COLORADO OR WASHINGTON 25, D. C.  
AND BY THE MISSOURI GEOLOGICAL SURVEY, ROLLA, MISSOURI  
A FOLDER DESCRIBING TOPOGRAPHIC MAPS AND SYMBOLS IS AVAILABLE ON REQUEST



ROAD CLASSIFICATION  
Heavy duty ——— Light duty ———  
Medium duty ——— Unimproved dirt ———  
U. S. Route ——— State Route ———  
This area also covered by 1:24,000-scale maps of  
Bonne Terre, Mineral Point, Irondale, and Flat River  
7.5 minute quadrangles, surveyed 1958  
BONNE TERRE, MO.  
N 3745—W 9030/15  
1958

USGS  
HISTORICAL FILE  
NATIONAL MAPPING DIVISION

MAY 28 1981