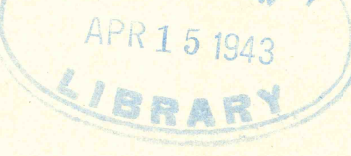
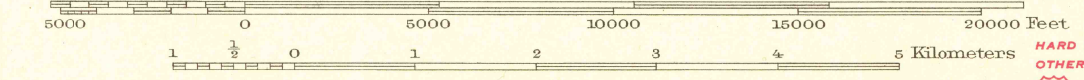


Topography by J.A. Shumate, T.V. Cummins and J.T. Schultz
Surveyed in 1936-1937



CLIFTON HILL (JUNC. U.S. ROUTE NO. 24) 22 MI. Scale 62500
KASEVILLE 9 MI.



Contour interval 20 feet
Datum is mean sea level

ROUTES USUALLY TRAVELED
HARD IMPROVED SURFACES
OTHER SURFACE IMPROVEMENTS
U.S. ROUTE 1042 STATE ROUTE 36

Polyconic projection, 1927 North American datum
5000 yard grid based on U.S. zone system, C
10000 foot grid based on Missouri (Central)
rectangular coordinate system MACON 3 MI.
HANNIBAL 65 MI.

ELMER, MO.
Edition of 1942