

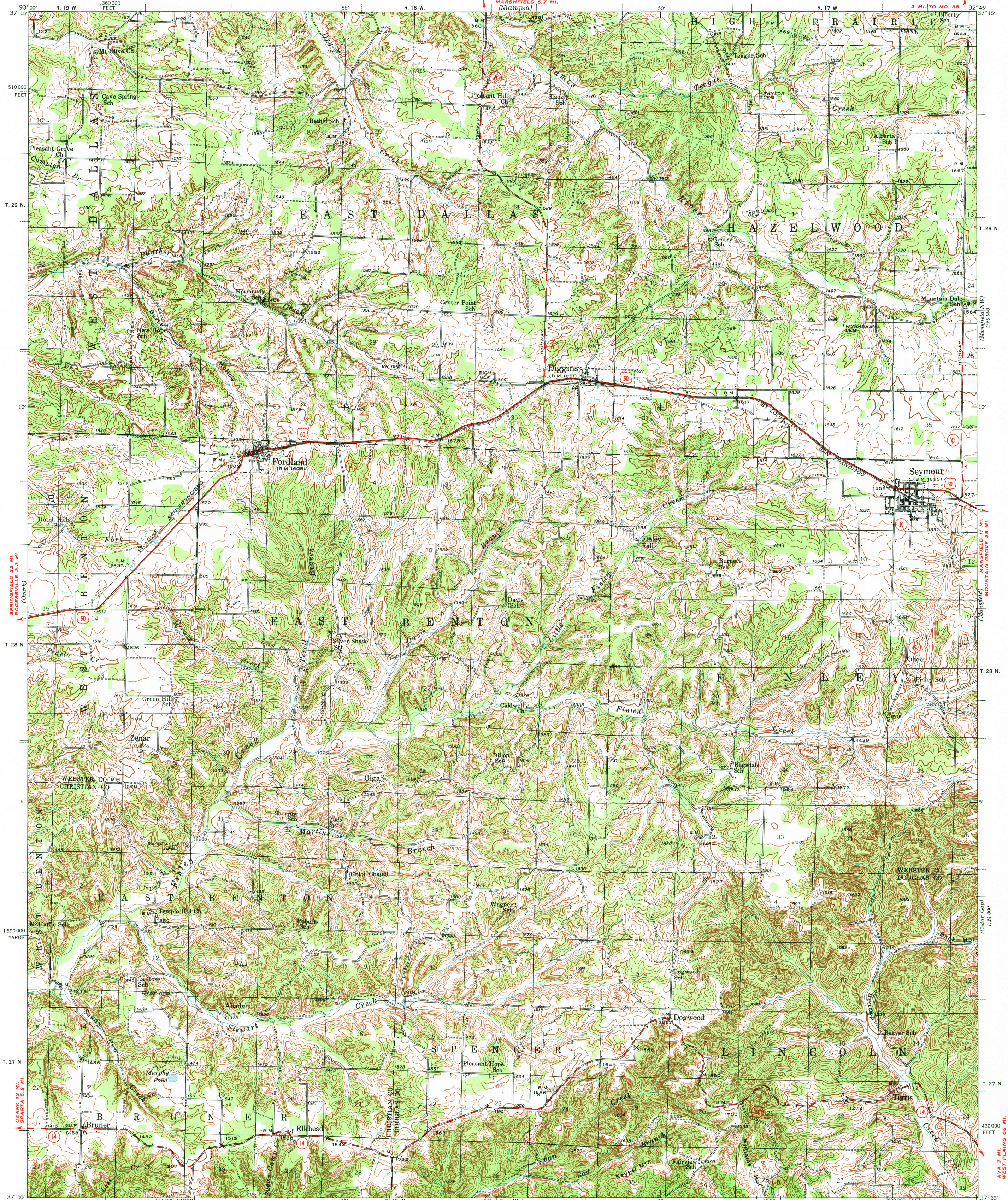
(Sturgis)

UNITED STATES  
DEPARTMENT OF THE INTERIOR  
GEOLOGICAL SURVEY

STATE OF MISSOURI  
REPRESENTED BY THE  
GEOLOGICAL SURVEY AND WATER RESOURCES  
H. A. BUEHLER, STATE GEOLOGIST

MISSOURI  
FORDLAND QUADRANGLE  
15-MINUTE SERIES

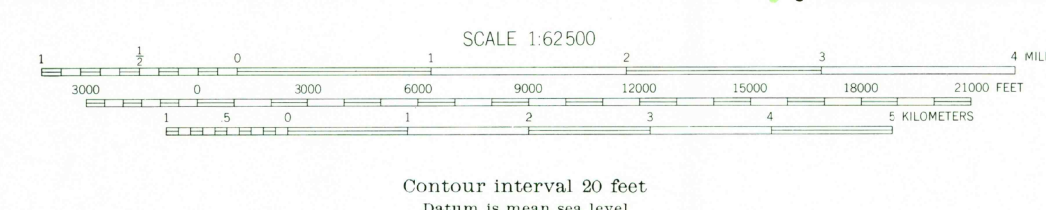
(Downs)  
1:24,000



Topography by J. B. Leavitt, W. R. Broadus, C. D. Mitchell,  
S. D. Farmer, L. E. Williams, and L. H. Bray  
Surveyed in 1932-1933, 1936-1937, and 1939

**ROAD CLASSIFICATION**  
Heavy-duty ——— 4 LANE 16 LANE Light-duty ———  
Medium-duty - - - 4 LANE 16 LANE Unimproved dirt - - - - -  
U. S. Route      State Route

TRUE NORTH  
MAGNETIC NORTH  
APPROXIMATE MEAN  
DECLINATION, 1939



SCALE 1:62,500  
4 MILES  
21000 FEET  
4 KILOMETERS  
POLYCONIC PROJECTION, 1927 NORTH AMERICAN DATUM  
5000 YARD GRID BASED ON U. S. ZONE SYSTEM, C  
10000 FOOT GRID BASED ON MISSOURI (CENTRAL)  
RECTANGULAR COORDINATE SYSTEM  
FORDLAND, MO. 18 1973  
N3700-W9245/15  
1939

FOR SALE BY U. S. GEOLOGICAL SURVEY, DENVER, COLORADO 80225 OR WASHINGTON, D. C. 20242  
A FOLDER DESCRIBING TOPOGRAPHIC MAPS AND SYMBOLS IS AVAILABLE ON REQUEST

USGS  
Historical File  
Topographic Edition

1055