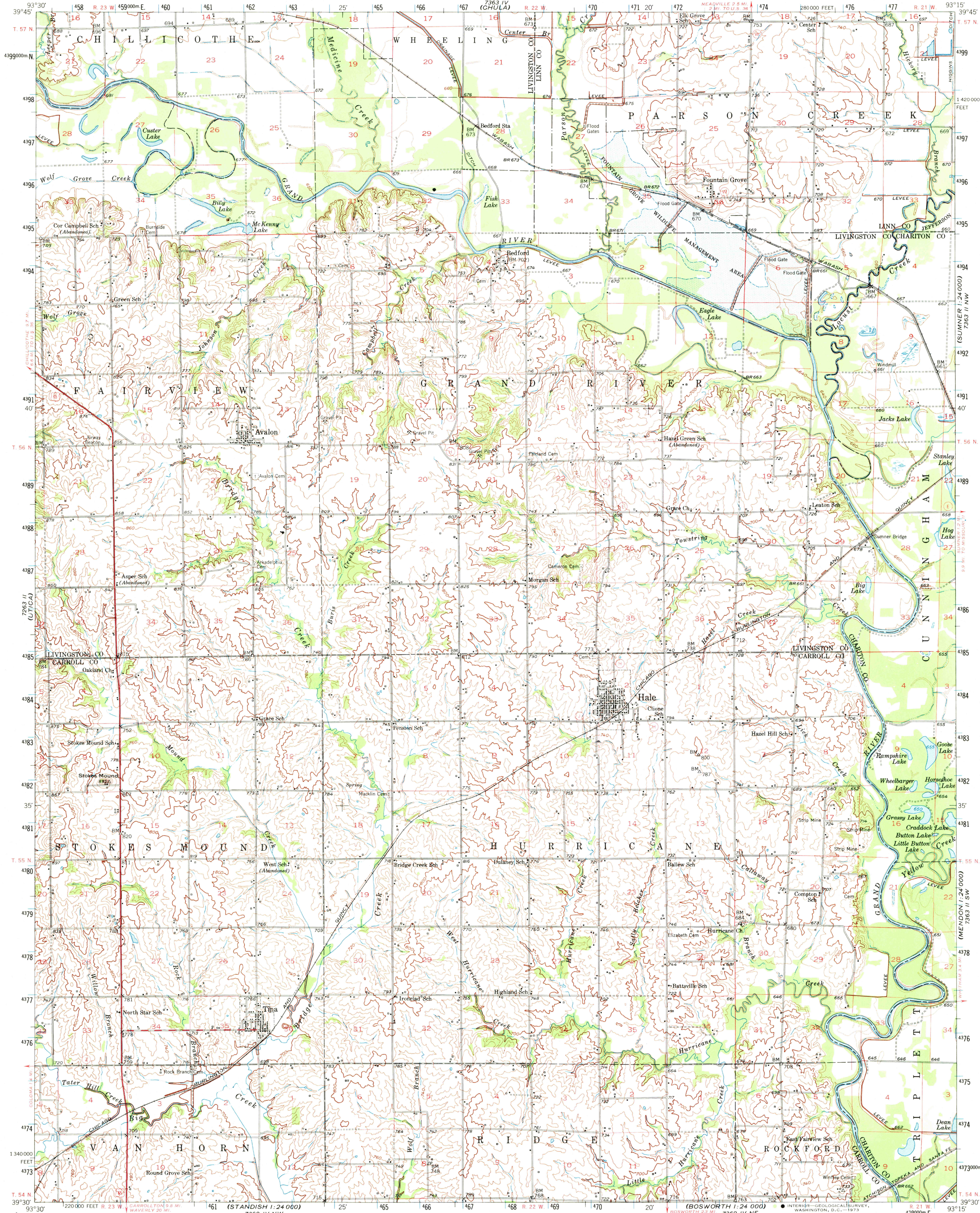


UNITED STATES
DEPARTMENT OF THE INTERIOR
GEOLOGICAL SURVEY

STATE OF MISSOURI
GEOLOGICAL SURVEY AND WATER RESOURCES
EDWARD L. CLARK, STATE GEOLOGIST

HALE QUADRANGLE
MISSOURI
15 MINUTE SERIES (TOPOGRAPHIC)

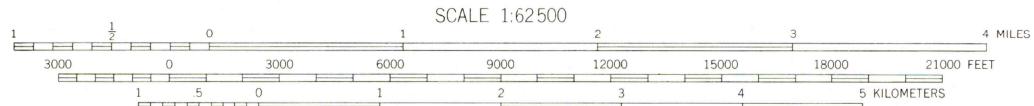


Maped, edited, and published by the Geological Survey
as part of the Department of the Interior program
for the development of the Missouri River Basin

Control by USGS and USC&GS
Culture and drainage in part compiled from
aerial photographs taken 1939-1940
Topography by plane-table surveys 1921 and 1950
Culture revised 1951

Polycrystalline projection. 1927 North American datum
10,000-foot grid based on Missouri coordinate system,
central zone
Broken light-blue lines indicate areas
subject to controlled inundation

1000-meter Universal Transverse Mercator grid ticks,
zone 15, shown in blue



CONTOUR INTERVAL 20 FEET
DOTTED LINES REPRESENT HALF-INTERVAL CONTOURS
DATUM IS MEAN SEA LEVEL

THIS MAP COMPLIES WITH NATIONAL MAP ACCURACY STANDARDS
FOR SALE BY U. S. GEOLOGICAL SURVEY, DENVER, COLORADO 80225 OR WASHINGTON, D. C. 20242
AND MISSOURI GEOLOGICAL SURVEY, ROLLA, MISSOURI 65401
A FOLDER DESCRIBING TOPOGRAPHIC MAPS AND SYMBOLS IS AVAILABLE ON REQUEST

ROAD CLASSIFICATION
Heavy-duty 4 LANE 16 LANE Light-duty
Medium-duty 4 LANE 16 LANE Unimproved dirt
U. S. Route State Route

The south half of this area is also covered
by 1:24,000 scale maps of the Tipton and
Hale 7.5 minute quadrangles

U.S. GEOLOGICAL SURVEY
TOPOGRAPHIC DIVISION

OCT 15 1973
HALE, MO.
N3930-W9315/15

1951

AMS 7363 III-SERIES V779