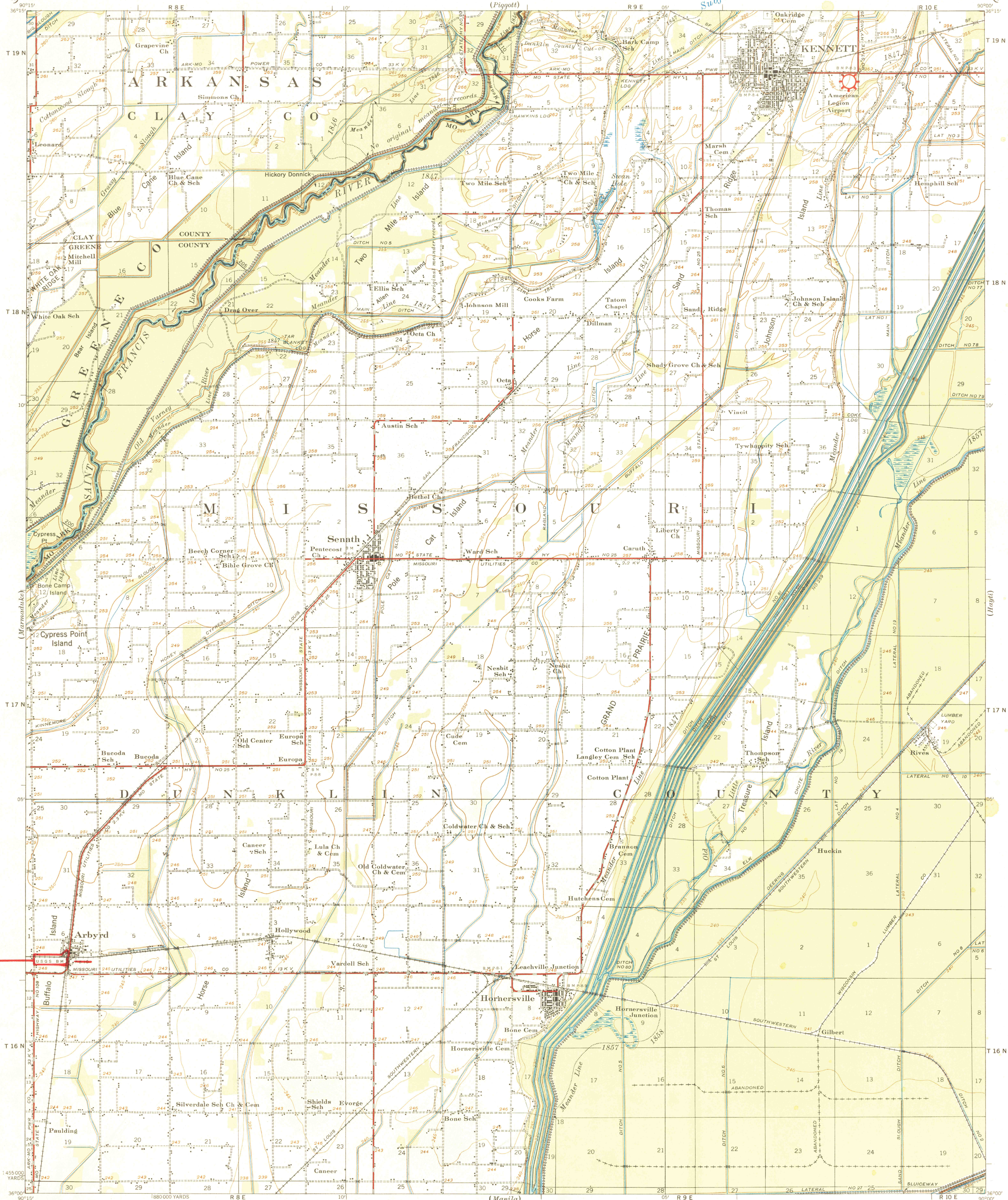
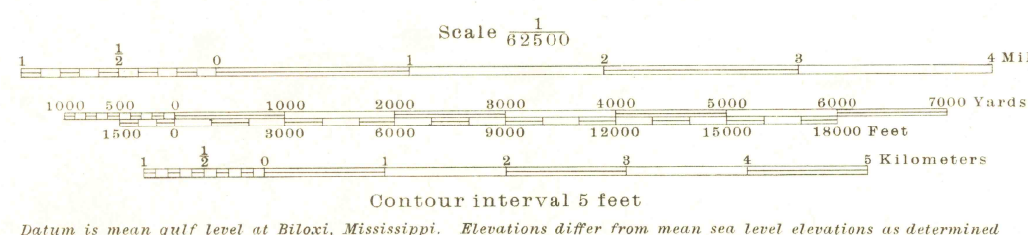


2d Advance Sheet  
Subject to Correction



"BM USGS"

Prepared under the direction of the President, Mississippi River Commission.  
Horizontal control by Mississippi River Commission and Corps of Engineers,  
U. S. Army, Memphis District.  
Vertical control by Mississippi River Commission and Corps of Engineers,  
U. S. Army, Memphis District.  
Topography by Corps of Engineers, U. S. Army, Memphis District, 1930.  
Revised by Mississippi River Commission, 1932-34.  
Political boundaries are shown according to best available information,  
and are subject to change except where established by court decision.  
Polyconic Projection, North American Datum.



ENGINEER REPRODUCTION PLANT U. S. ARMY, WASHINGTON, D. C. 9696  
1934  
LEGEND  
Levee  
Retards and dikes  
Revetment  
River Gage  
Levee mile post  
Levee station  
Towhead  
L.M.P.  
L.S.  
T.H.