

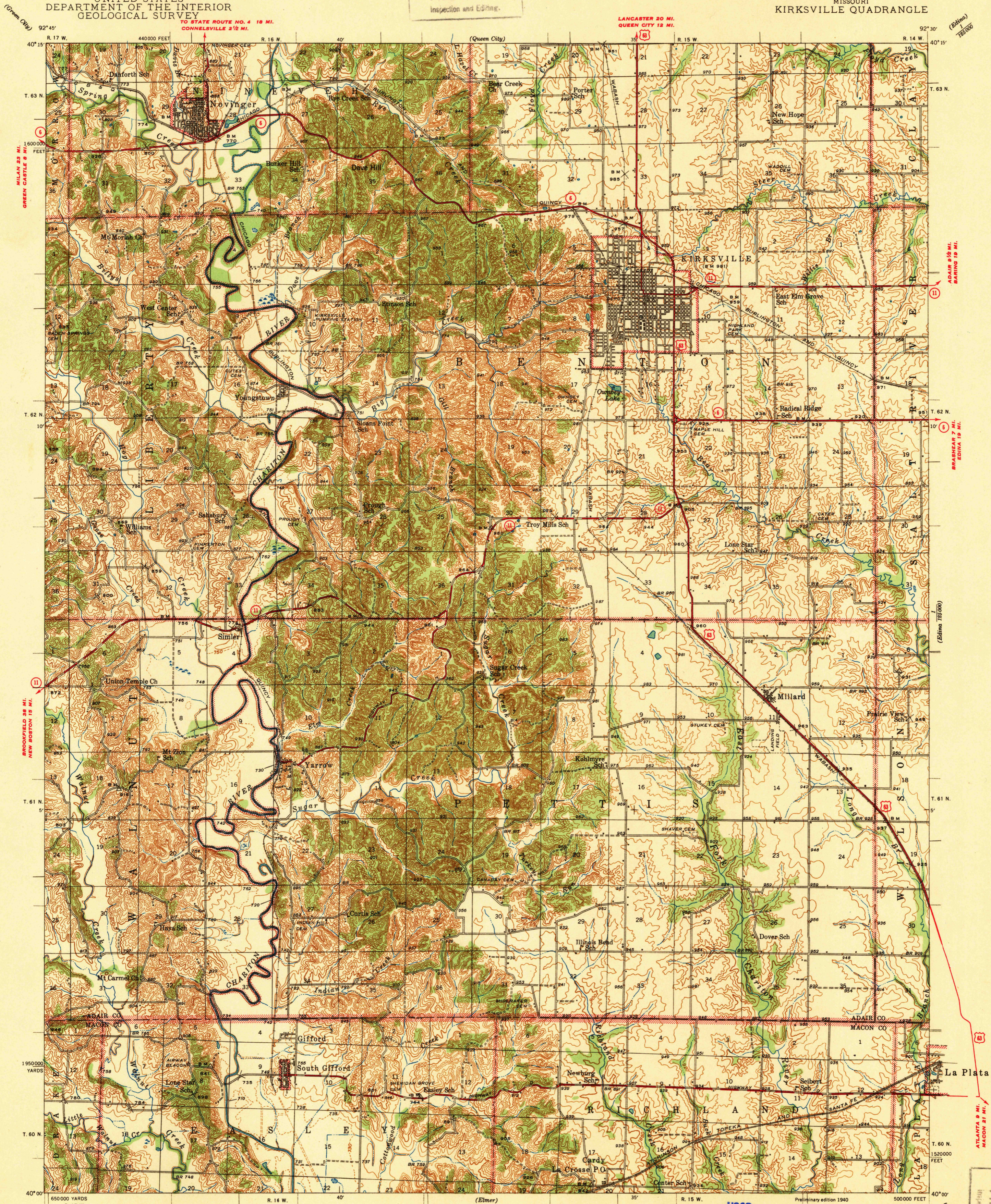
U. S. G. S.
FILE COPY
Inspection and Editing.

UNITED STATES
DEPARTMENT OF THE INTERIOR
GEOLOGICAL SURVEY

MISSOURI
KIRKSVILLE QUADRANGLE

TO STATE ROUTE NO. 4 18 MI.
CONNELSVILLE 2 1/2 MI.

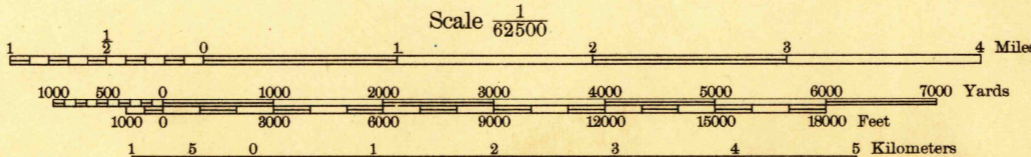
LANCASTER 20 MI.
QUEEN CITY 12 MI.



Glenn S. Smith, Division Engineer
Topography by T. V. Cummins, C. A. Killian, W. P. Metcalfe,
J. T. Powell, J. F. W. Smith, T. A. Magee, K. D. Cox, and C. L. Stites
Surveyed in 1938

Only landmark buildings are shown within
the city limits of Kirksville

APPROXIMATE MEAN
DECLINATION, 1938



Contour interval 20 feet
10 foot contours added in dashed lines
Datum is mean sea level

USGS
Historical File
Topographic Division

Preliminary edition 1940
500000 FEET
R. 14 W. 40° 00'

ROUTES USUALLY TRAVELED
HARD IMPERVIOUS SURFACES
OTHER SURFACE IMPROVEMENTS
1940
2 U. S. ROUTE 3 STATE ROUTE

KIRKSVILLE, MO.

N4000-W9230/15

U. S. G. S.
FILE COPY
Inspection and Editing.