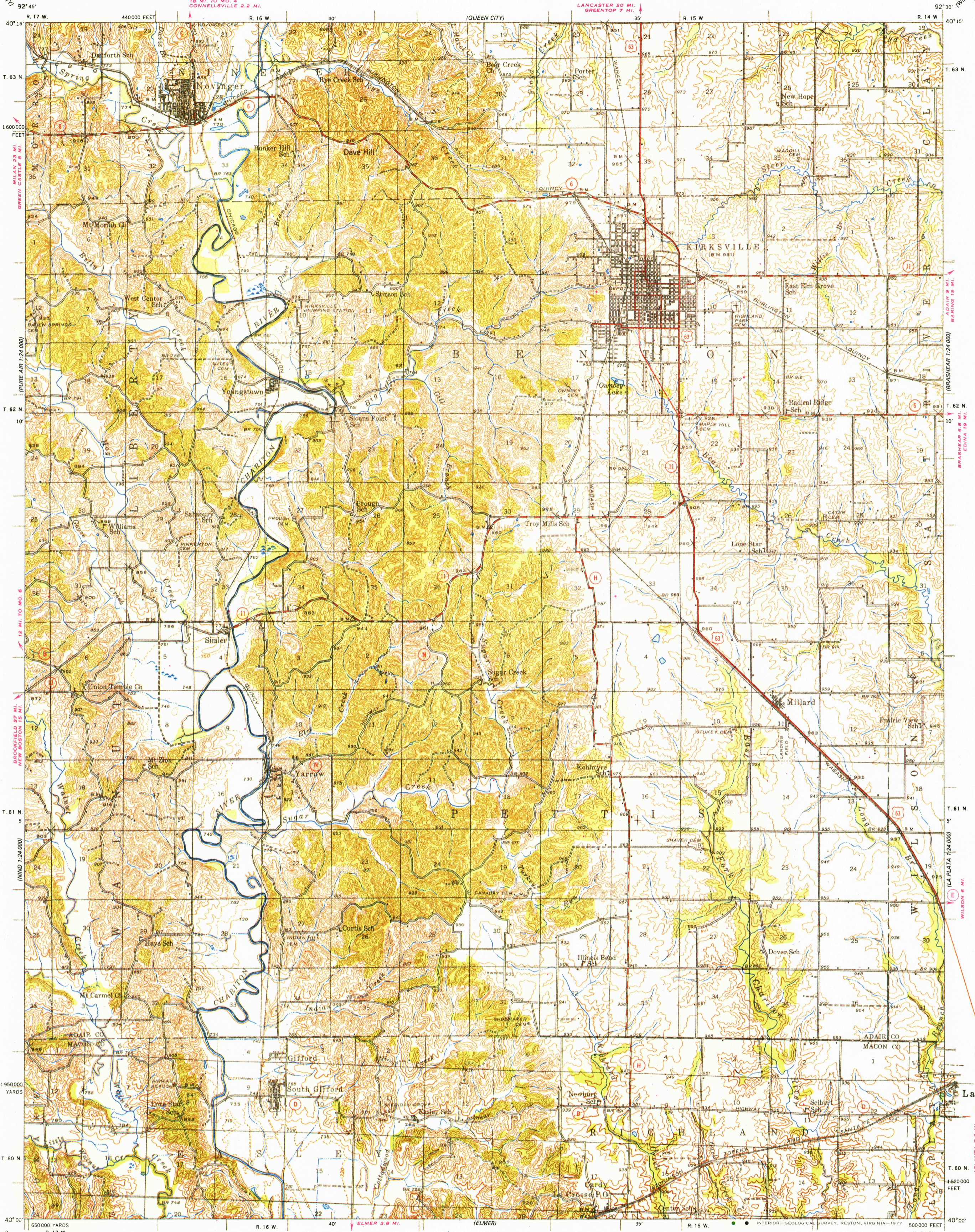


UNITED STATES
DEPARTMENT OF THE INTERIOR
GEOLOGICAL SURVEY

MISSOURI
KIRKSVILLE QUADRANGLE

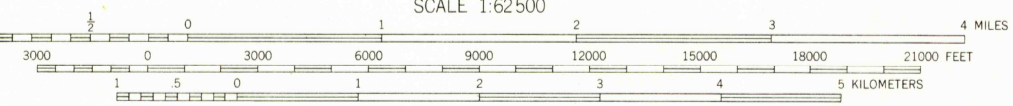


Glenn S. Smith, Division Engineer
Topography by T. V. Cummins, C. A. Killian, W. P. Metcalfe,
J. T. Powell, J. F. W. Smith, T. A. Magee, K. D. Cox, and C. L. Stites
Surveyed in 1938

Only landmark buildings are shown within
the city limits of Kirksville

ROAD CLASSIFICATION
Heavy-duty ——— 4 LANE 16 LANE Light-duty ———
Medium-duty - - - 4 LANE 16 LANE Unimproved dirt - - -
U. S. Route State Route

TRUE NORTH
MAGNETIC NORTH
APPROXIMATE MEAN
DECLINATION, 1938



Contour interval 20 feet
10 foot contours added in dashed lines
NATIONAL GEODETIC VERTICAL DATUM OF 1929

FOR SALE BY U. S. GEOLOGICAL SURVEY, DENVER, COLORADO 80225, OR RESTON, VIRGINIA 22092
A FOLDER DESCRIBING TOPOGRAPHIC MAPS AND SYMBOLS IS AVAILABLE ON REQUEST

Polyconic projection. 1927 North American datum
6300 yard grid based on U. S. zone system, C
10000 foot grid based on Missouri (Central)
rectangular coordinate system

KIRKSVILLE, MO.
1938
N 4000-W9230/15

This map was reproduced by electronic color scanning of an earlier printing (1952).

USGS
Historical File
Topographic Division

2300
MAR 09 1977