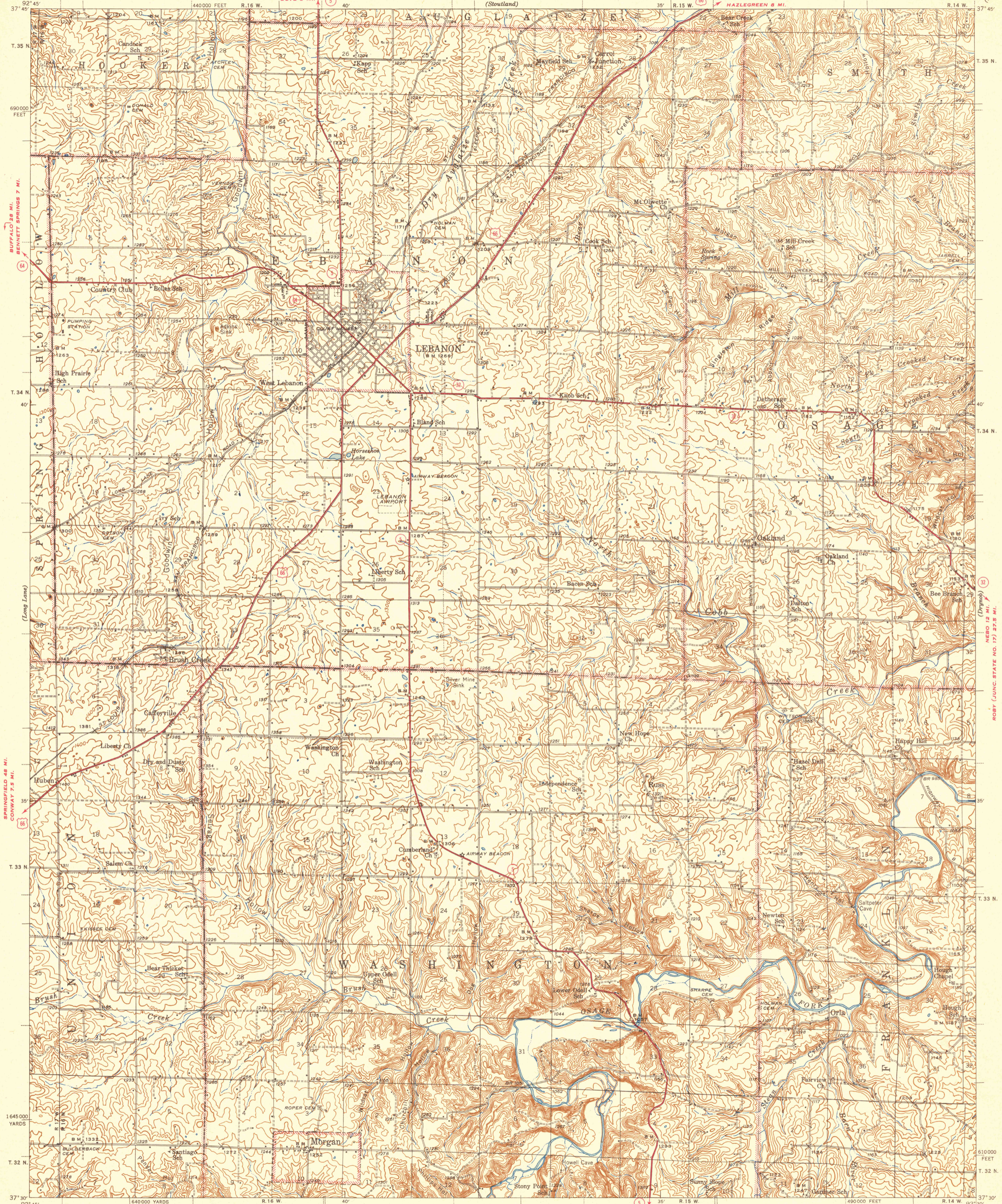


CAMDENTON (JUNC. U. S. NO. 54) 21 MI.  
DOVE 3 MI.

ROLLA 56 MI.  
HAZLEGREEN 8 MI.

(Stoutland)

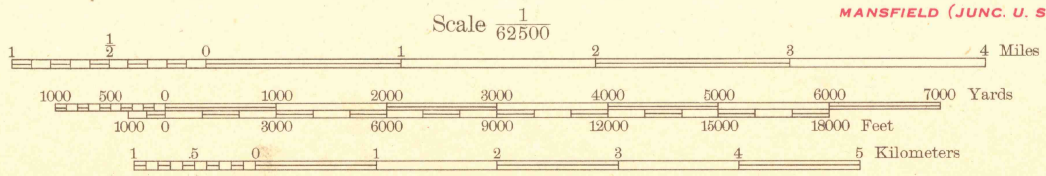


Topography by Daniel Kennedy, E. J. Fennell,  
C. L. Salley, and W. F. Tuley  
Surveyed in 1941  
Only landmark buildings are shown  
within the city limits of Lebanon

TRUE NORTH  
MAGNETIC NORTH  
APPROXIMATE MEAN  
DECLINATION, 1941

**SURFACE WATER BRANCH  
SPECIAL REPORTS SECTION**

Contour interval 20 feet  
Datum is mean sea level



ROUTES USUALLY TRAVELED  
HARD IMPROVED SURFACES  
OTHER SURFACE IMPROVEMENTS  
U. S. ROUTE 1943 STATE ROUTE

Polyconic projection. 1927 North American datum  
5000 yard grid based on U. S. zone system, C  
10000 foot grid based on Missouri (Central)  
rectangular coordinate system

LEBANON, MO.  
Edition of 1943  
N3730-W9230/15