



Maped by the Geological Survey
1943

ELLINGTON 0.8 MI.
JUNC. U.S. NO. 60 16 MI.

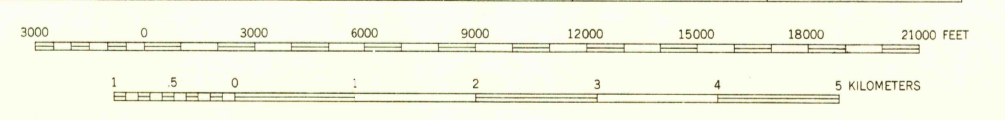
SCALE 1:62500

INTERIOR GEOLOGICAL SURVEY, WASHINGTON, D. C.—1957
M. R. 5192
Polyconic projection. 1927 North American datum

ROAD CLASSIFICATION

Heavy-duty	Light-duty
Medium-duty	Unimproved dirt
U. S. Route	State Route

APPROXIMATE MEAN
DECLINATION, 1948



Contour interval 20 feet
Datum is mean sea level

FOR SALE BY U. S. GEOLOGICAL SURVEY, FEDERAL CENTER, DENVER, COLORADO OR WASHINGTON 25, D. C.
AND BY THE MISSOURI GEOLOGICAL SURVEY, ROLLA, MISSOURI
A FOLDER DESCRIBING TOPOGRAPHIC MAPS AND SYMBOLS IS AVAILABLE ON REQUEST

USGS
Historical File
Topographic Division

10000 foot grid based on Missouri (East) rectangular coordinate system
1000-meter Universal Transverse Mercator grid ticks, zone 15, shown in blue

U.S.G.S.
FILE COPY
TOPOGRAPHIC DIVISION

LESTERVILLE, MO.
N3715-W9045/15
1943
JUL 17 1957

U.S.G.S.
FILE COPY
TOPOGRAPHIC DIVISION

1625