



Mapped by the Geological Survey
1943

ELLINGTON 0.8 MI.
JUNC. U.S. NO. 60 16 MI.

SCALE 1:62500

INTERIOR—GEOLOGICAL SURVEY, WASHINGTON, D. C.—1963
MR 6995

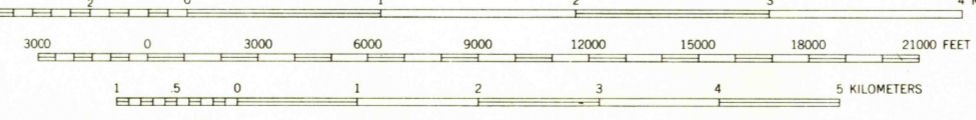
Polyconic projection. 1927 North American datum
10000 foot grid based on Missouri (East)
rectangular coordinate system
1000-meter Universal Transverse Mercator grid ticks,
zone 15, shown in blue

ROAD CLASSIFICATION

Heavy duty	Light duty
Medium duty	Unimproved dirt
U. S. Route	State Route

TRUE NORTH
MAGNETIC NORTH

APPROXIMATE MEAN
DECLINATION, 1943



Contour interval 20 feet
Datum is mean sea level

FOR SALE BY U. S. GEOLOGICAL SURVEY, DENVER 25, COLORADO OR WASHINGTON 25, D. C.
AND BY THE MISSOURI GEOLOGICAL SURVEY, ROLLA, MISSOURI
A FOLDER DESCRIBING TOPOGRAPHIC MAPS AND SYMBOLS IS AVAILABLE ON REQUEST

USGS
Historical File
Topographic Division

U.S.G.S.
FILE COPY
TOPOGRAPHIC DIVISION

LESTERVILLE, MO.

N3715-W9045/15
1943

AUG 23 1963

3115