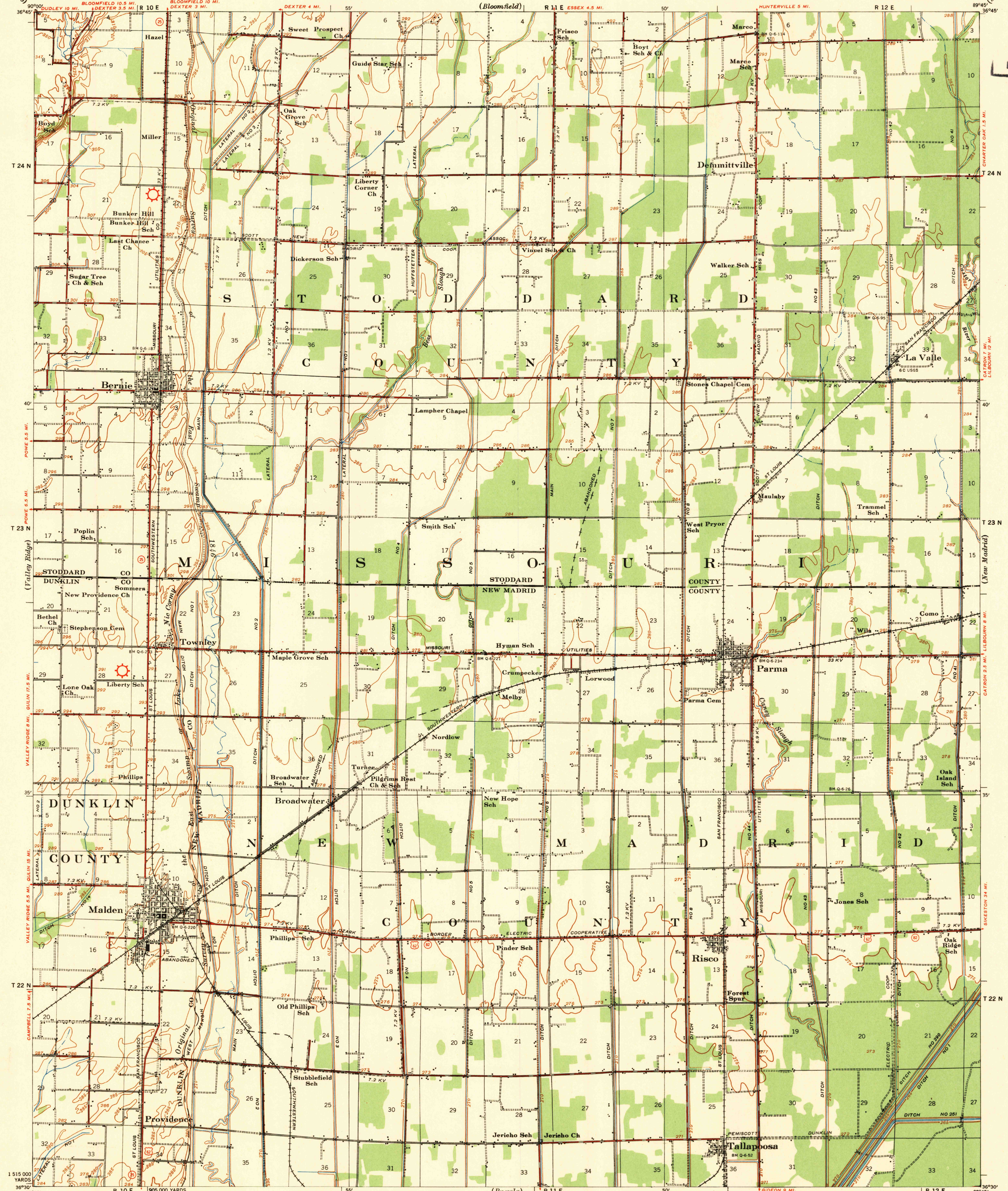


WAR DEPARTMENT
CORPS OF ENGINEERS

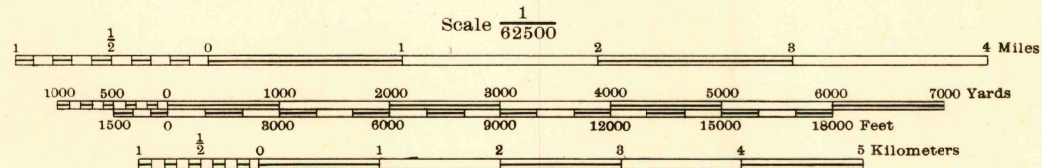
U. S. G. S.
FILE COPY
Inspection and Editing

MISSOURI
MALDEN QUADRANGLE
GRID ZONE "C"

FILE COPY
Inspection and Editing



Prepared under the direction of the President, Mississippi River Commission.
Horizontal control by Corps of Engineers, U. S. Army, Memphis District.
Vertical control by Corps of Engineers, U. S. Army, Memphis District.
Descriptions, elevations and geodetic positions of bench marks may be obtained from Memphis Engineer District, Memphis, Tenn.
Topography by Corps of Engineers, U. S. Army, Memphis District, 1930-1940.
Revised by Mississippi River Commission, 1932, 1935 and 1940.
Political boundaries are shown according to best available information and are subject to change except where established by court decision.
Polyconic Projection, North American Datum.



Contour intervals 5 and 25 feet changing
on the 325 foot contour

Datum is mean gulf level at Biloxi, Mississippi. Elevations differ from mean sea level elevations as determined by the U. S. Coast and Geodetic Survey, by small fractions of a foot. Persons interested may secure elevations of bench marks as determined by the latest U. S. C. & G. S. adjustment, by applying to the U. S. Coast and Geodetic Survey.

FIVE THOUSAND YARD GRID COMPUTED FROM "GRID SYSTEM FOR PROGRESSIVE MAPS
IN THE U. S. C. & G. S. SPECIAL PUBLICATION NO. 59

Additional copies may be procured from
The President, Mississippi River Commission
Vicksburg, Miss. 10 cents per copy

USGS
Historical File
Topographic Division

LEGEND
Levee
Retards and dikes
Revetment
River Gage
Levee mile post
Levee station
Towhead
LMP
LS
TH
APPROXIMATE MEAN
DECLINATION 1915
ANNUAL MAGNETIC CHANGE 2'
INCREASE
ROUTES USUALLY TRAVELED
HARD IMPERVIOUS SURFACES
OTHER SURFACE IMPROVEMENTS
1940
U. S. ROUTE
STATE ROUTE

MALDEN, MO.
EDITION OF 1940
N3630-W8945/15

PRICE 20 CENTS PER COPY
For quadrangle maps effective on and after
1 November 1948

U. S. G. S.
FILE COPY
Inspection and Editing