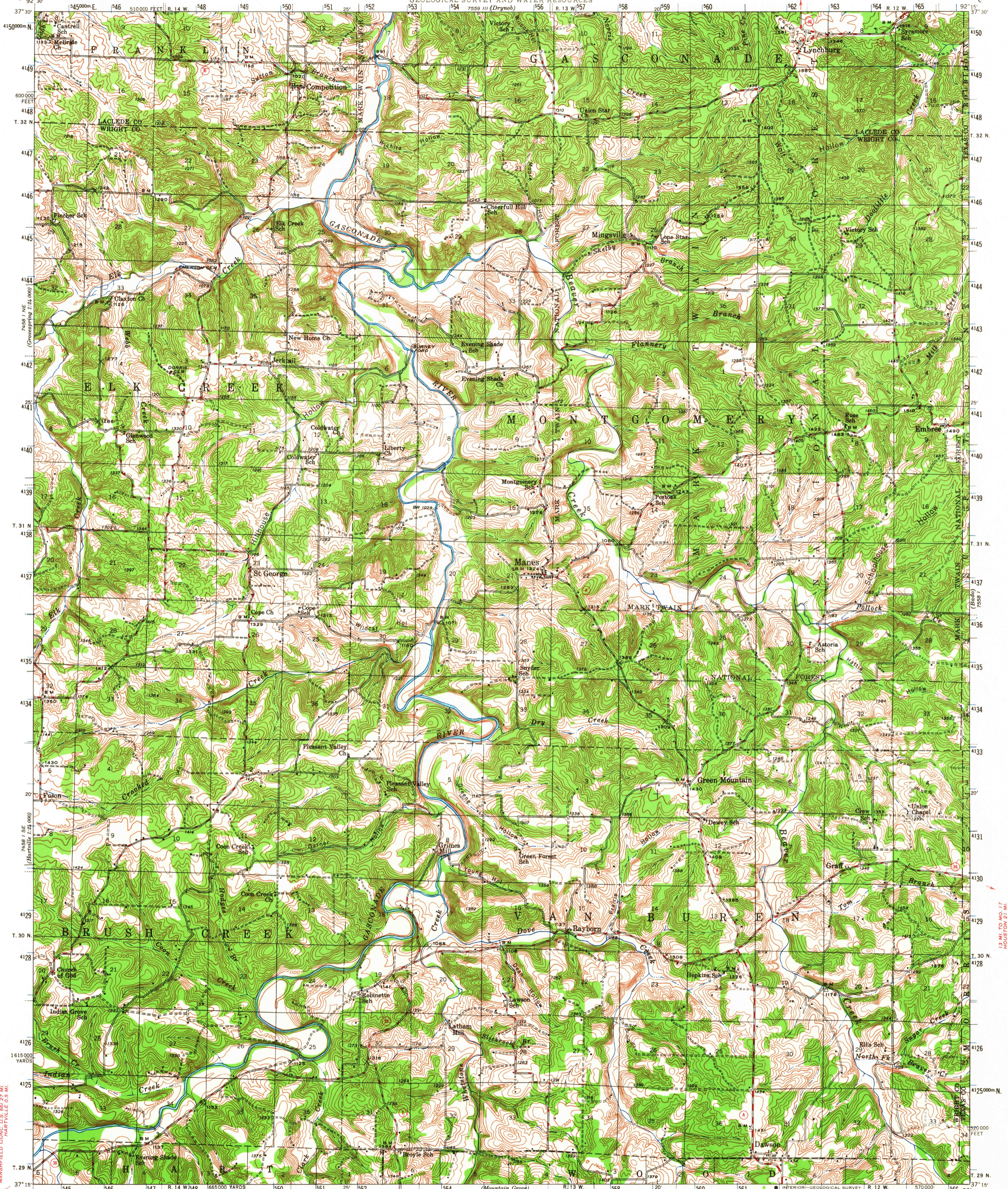


UNITED STATES DEPARTMENT OF THE INTERIOR GEOLOGICAL SURVEY

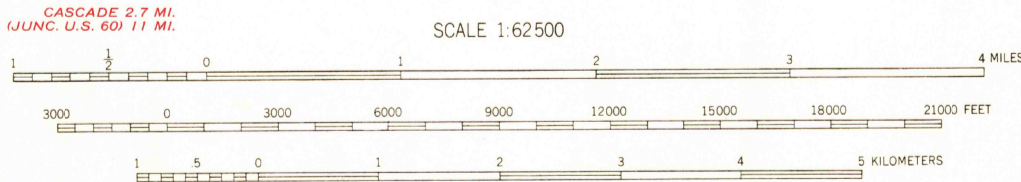
STATE OF MISSOURI REPRESENTED BY THE GEOLOGICAL SURVEY AND WATER RESOURCES

MISSOURI MANES QUADRANGLE 15-MINUTE SERIES



Topography by S. T. Penick, J. M. Rawls, Daniel Kennedy, J. P. Rydeen, H. S. Milsted, W. B. Brewer, A. W. Plushnick, and C. A. Killian. Surveyed in 1931, 1933, and 1941.

ROAD CLASSIFICATION: HARD-SURFACE ALL WEATHER ROADS, DRY WEATHER ROADS, HEAVY-DUTY, IMPROVED DIRT, MEDIUM-DUTY, UNIMPROVED DIRT, LOOSE-SURFACE, GRADED, OR NARROW HARD-SURFACE, U. S. ROUTE, STATE ROUTE.



Contour interval 20 feet. Datum is mean sea level.

FOR SALE BY U. S. GEOLOGICAL SURVEY, DENVER, COLORADO 80225 OR WASHINGTON, D. C. 20242 AND BY THE MISSOURI GEOLOGICAL SURVEY, ROLLA, MISSOURI. A FOLDER DESCRIBING TOPOGRAPHIC MAPS AND SYMBOLS IS AVAILABLE ON REQUEST.

USGS Historical File Topographic Division U.S.G.S. FILE COPY TOPOGRAPHIC DIVISION. MANES, MO. N 3715-W 9215/15 1941 AMS 7558 IV-SERIES V779

NOV 23 1967 1740