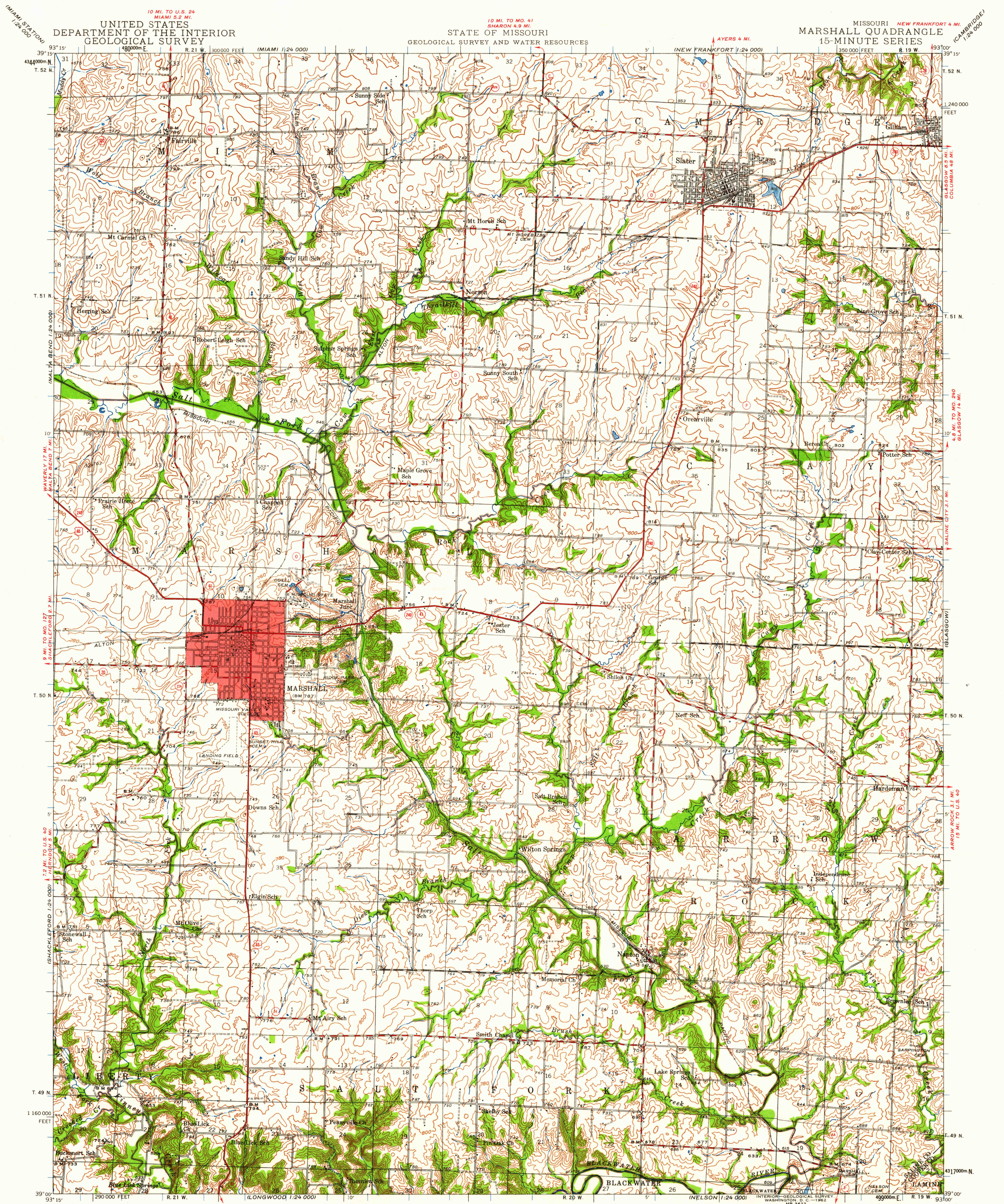


UNITED STATES  
DEPARTMENT OF THE INTERIOR  
GEOLOGICAL SURVEY

STATE OF MISSOURI  
GEOLOGICAL SURVEY AND WATER RESOURCES

MISSOURI  
MARSHALL QUADRANGLE  
15-MINUTE SERIES



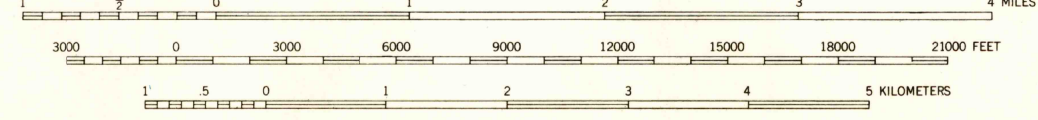
Topography by J. A. Shumate, H. C. Weathers, and V. L. Hill  
Surveyed in 1940

SCALE 1:62500

1927 North American datum  
10,000-foot grid based on Missouri (Central)  
rectangular coordinate system  
1000-meter Universal Transverse Mercator grid ticks,  
zone 15, shown in blue  
NELSON 0.4 MI.

ROAD CLASSIFICATION  
Heavy-duty ——— Light-duty ———  
Medium-duty ——— Unimproved dirt ———  
U.S. Route      State Route

TRUE NORTH  
MAGNETIC NORTH  
APPROXIMATE MEAN  
DECLINATION, 1940



CONTOUR INTERVAL 20 FEET  
DATUM IS MEAN SEA LEVEL

FOR SALE BY U. S. GEOLOGICAL SURVEY, DENVER 25, COLORADO OR WASHINGTON 25, D. C.  
AND BY THE MISSOURI GEOLOGICAL SURVEY, ROLLA, MISSOURI  
A FOLDER DESCRIBING TOPOGRAPHIC MAPS AND SYMBOLS IS AVAILABLE ON REQUEST

USGS  
Historical File  
Topographic Division

MARSHALL, MO.  
N3900—W9300/15  
1940

USGS  
FILE COPY  
TOPOGRAPHIC DIVISION

1705  
JAN 10 1963