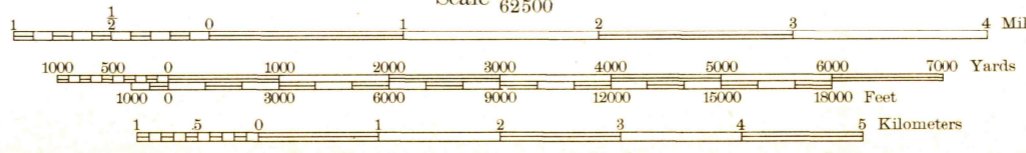


Topography by J. A. Shumate, H. C. Weathers, and V. Hill. Surveyed in 1940. Gray tint indicates area in which only landmark buildings are shown.

JUNC. U. S. NO. 40 2.8 MI. SEDALIA 20 MI.



Contour interval 20 feet. Datum is mean sea level.

USGS Historical File Topographic Data. ROUTES SHOWN UNTRAVELED. HARD IMPROVED SURFACES. OTHER SURFACE IMPROVEMENTS. U.S. ROUTE 1943. STATE ROUTE.

MARSHALL, MO. Edition of 1944.

N3900-W9300/15

MAR 27 1944

3135