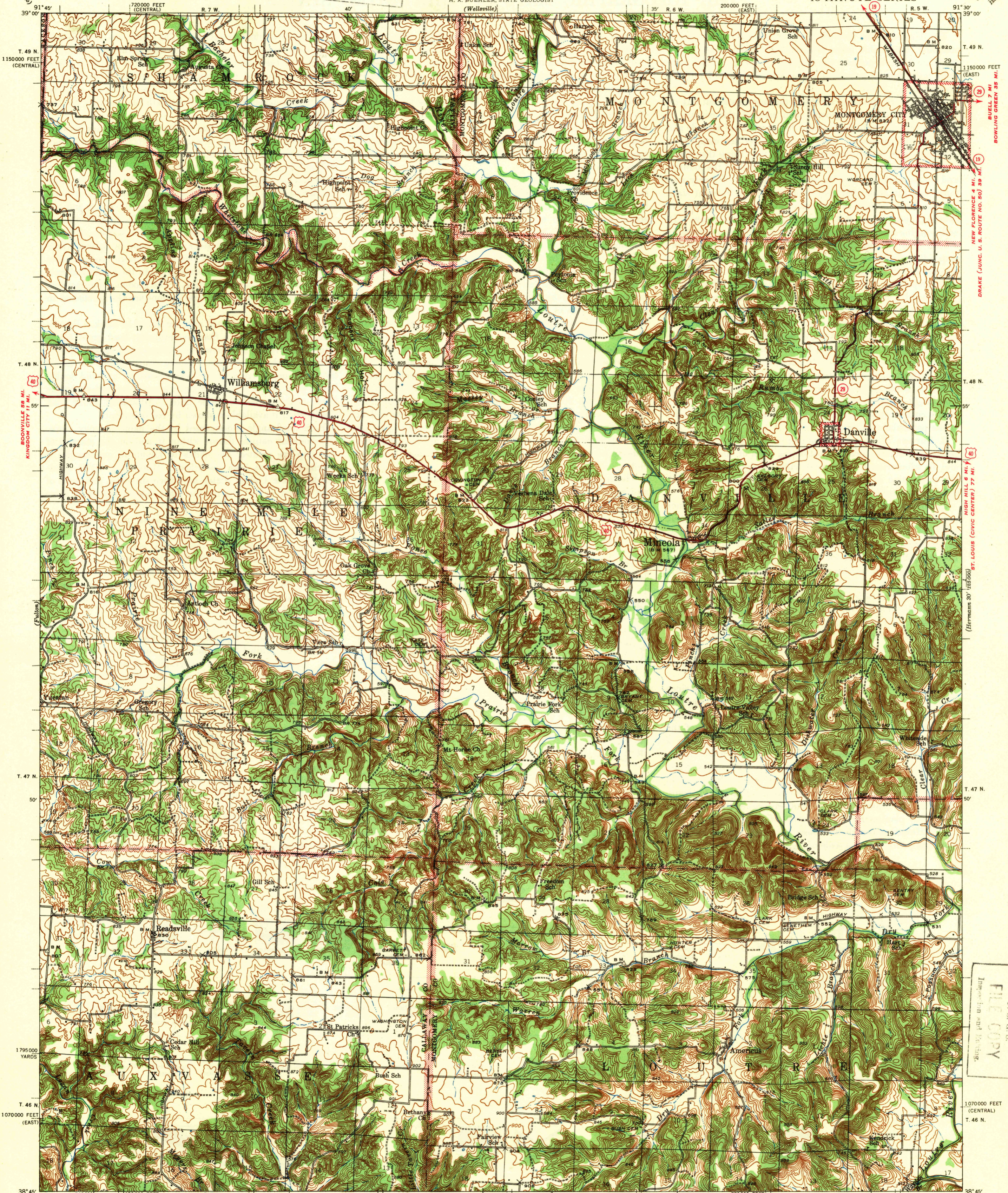


U. S. G. S. FILE COPY Inspection and Editing.

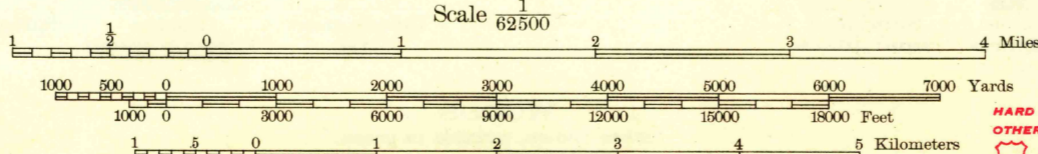


BOONVILLE 58 MI. KINGDOM CITY 17 MI.

NEW FLORENCE 4 MI. DRANE (JUNC. U. S. ROUTE NO. 50) 39 MI. BUELL 7 MI. BOWLING GREEN 35 MI. HIGH HILL 6 MI. ST. LOUIS (CIVIC CENTER) 77 MI. (Hermann 30' 125000)

Topography by J. A. Shumate, S. D. Farmer, L. E. Williams, and H. C. Weathers Surveyed in 1939-1940

TRUE NORTH MAGNETIC NORTH APPROXIMATE MEAN DECLINATION, 1940



Contour interval 20 feet Datum is mean sea level

USGS Historical File Topographic Division

ROUTES USUALLY TRAVELED HARD IMPERVIOUS SURFACES OTHER SURFACE IMPROVEMENTS U. S. ROUTE 1942 STATE ROUTE

Polyconic projection. 1927 North American datum 5000 yard grid based on U. S. zone system, C 10000 foot grids based on Missouri (East) and Missouri (Central) rectangular coordinate systems MONTGOMERY CITY, MO. N3845-W9130/15 Edition of 1942

NOV 11 1942

U. S. G. S. FILE COPY Inspection and Editing.