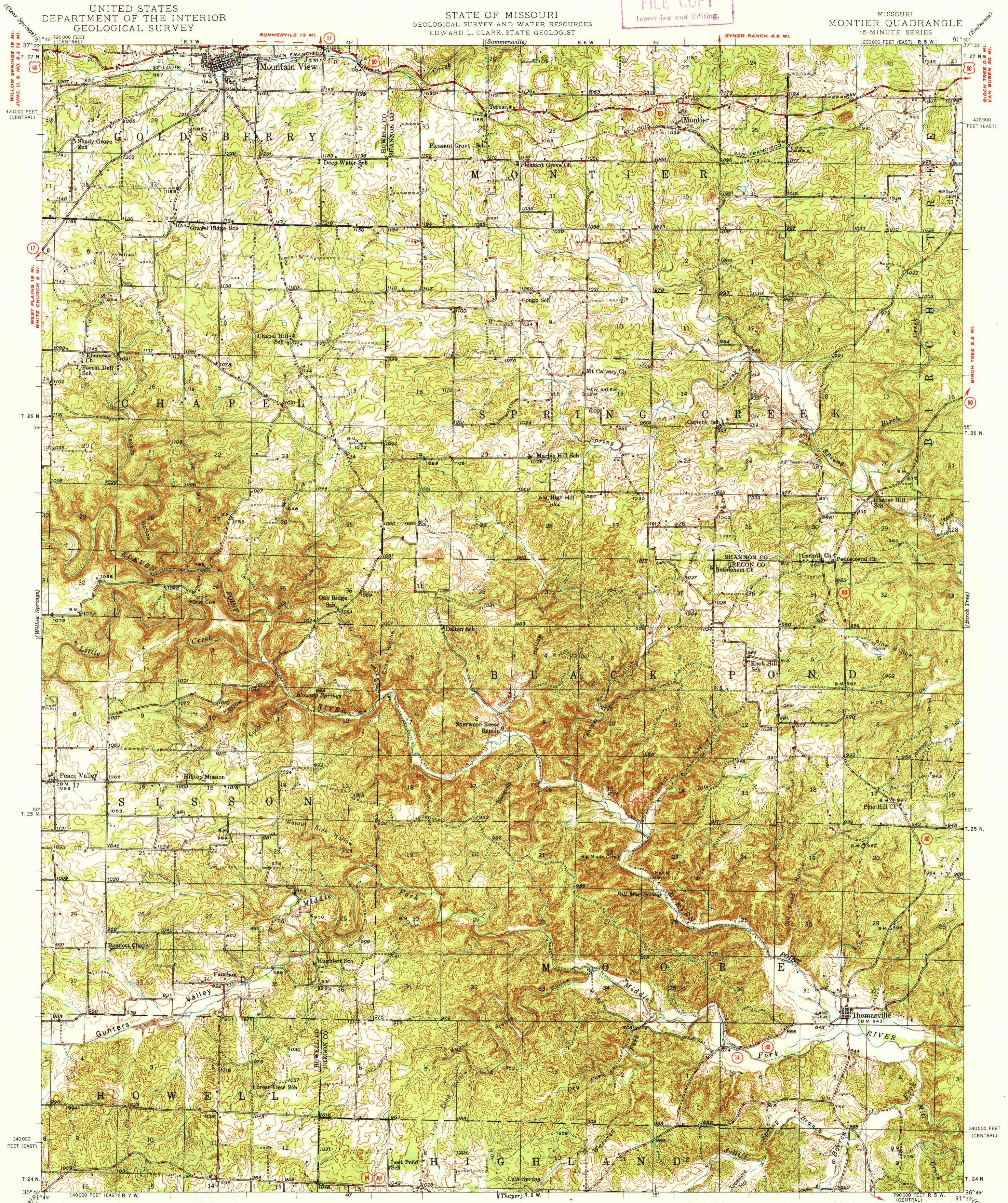
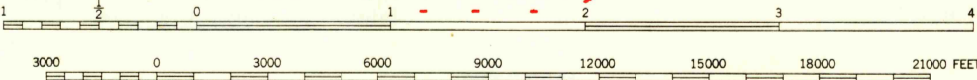


U.S.G.S.  
FILE COPY  
Inspection and Editing.



Mapped by the Geological Survey  
1943-1945  
JUNC. STATE NO. 17 2.2 MI.  
WEST PLAINS 7 MI.

SCALE 1:62500



Contour interval 20 feet  
Datum is mean sea level

**ROAD CLASSIFICATION**  
1947  
Dependable hard-surface heavy-duty road  
Secondary hard-surface all-weather road  
Dirt road  
Dry weather roads  
Loose-surface graded  
Unsurfaced, graded  
Dirt road  
U.S. Route 16  
State Route 80

APPROXIMATE MEAN DECLINATION, 1946

USGS  
Historical File  
Topographic Division  
U.S.G.S.  
FILE COPY  
Inspection and Editing.

MONTIER, MO.  
Edition of 1948  
N3645-W9130/15

JUL 12 1949