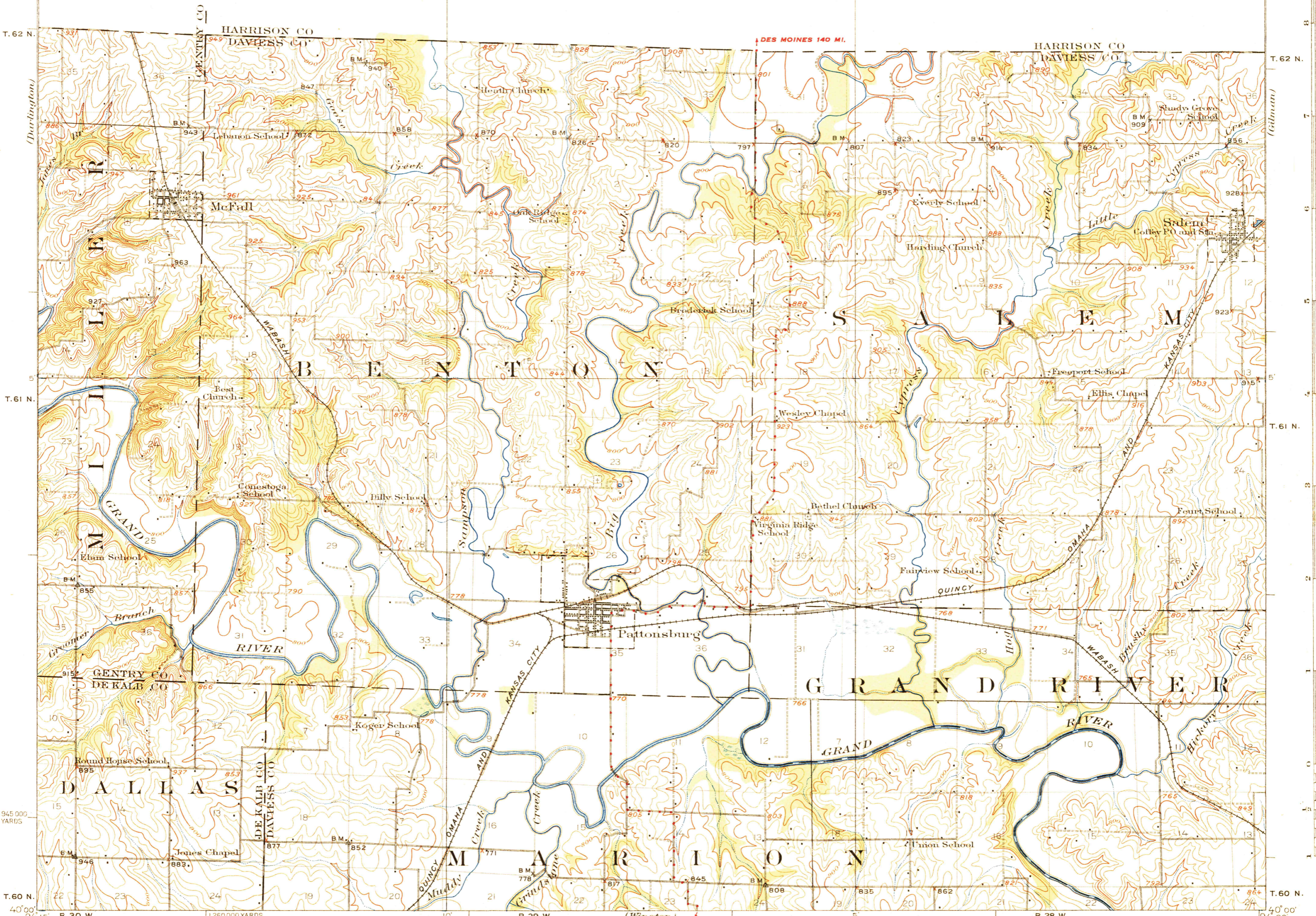


94° 15' R. 30 W. 10' R. 29 W. 5' R. 28 W. 94° 00'

PRELIMINARY EDITION
UNSURVEYED AREA

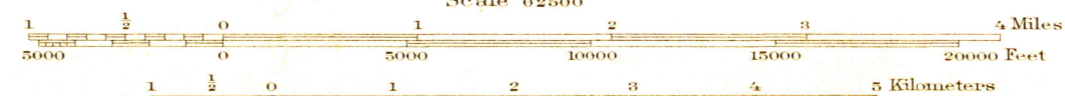
USGS
Historical File
Topographic Division



DES MOINES 140 MI.

KANSAS CITY 90 MI.

Scale 62500



Contour interval 20 feet
Datum is mean sea level

Polyconic projection, North American datum
5000 yard grid based upon U.S. zone system, D

THROUGH ROUTES
SECONDARY ROUTES
SECTIONS IN POOR CONDITION

PATTONSBURG, MO.
Edition of 1925

USGS
Historical File
Topographic Division

(590)

10V 5 1823 (590)

APPROXIMATE MEAN
DECLINATION, 1922

Topography by C.L. Sadler and J.M. Rawls
Control in part from railroad valuation surveys
Surveyed in 1922

Mayville

Callaway