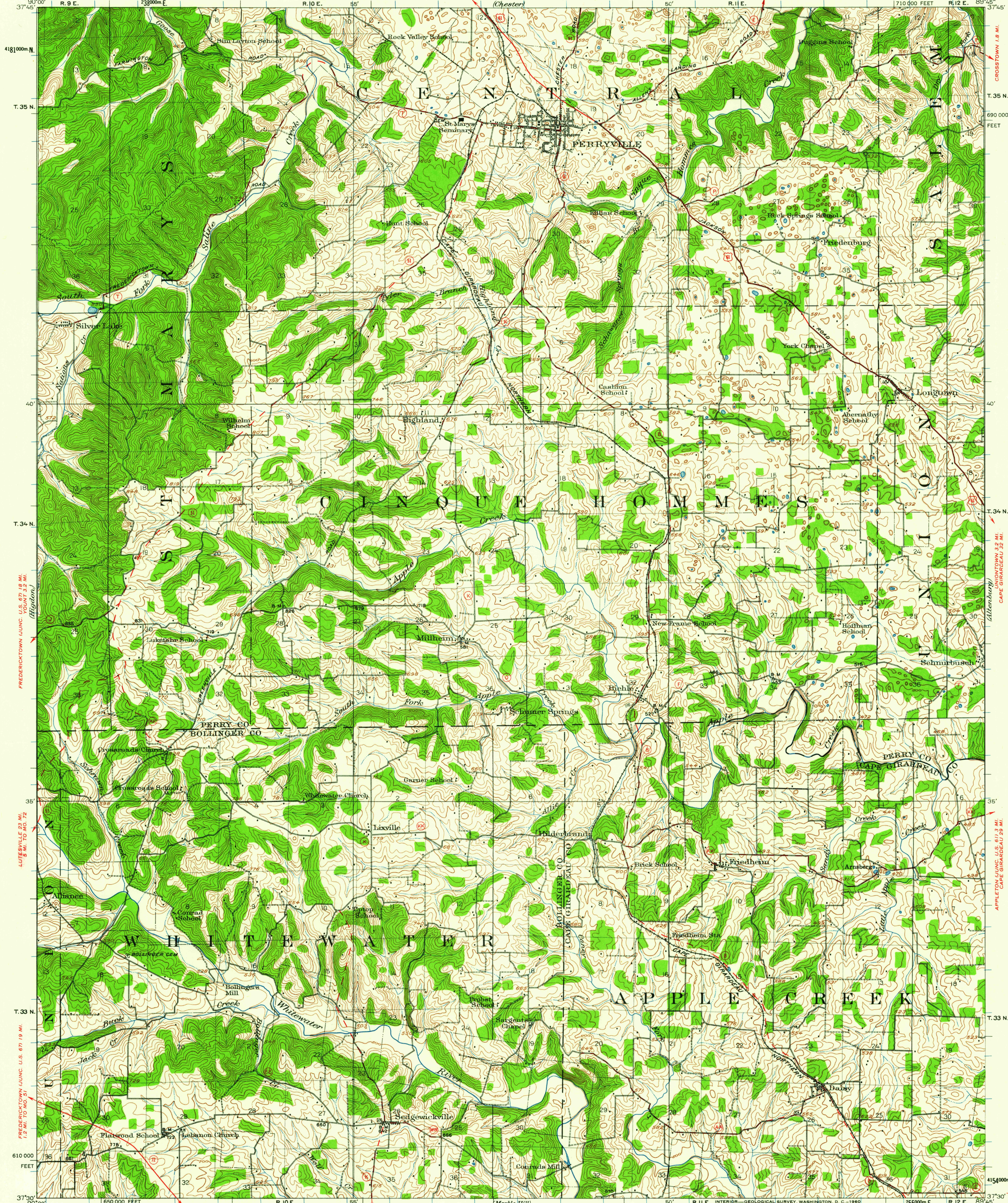


UNITED STATES
DEPARTMENT OF THE INTERIOR
GEOLOGICAL SURVEY

STATE OF MISSOURI
BUREAU OF GEOLOGY AND MINES

MISSOURI
PERRYVILLE QUADRANGLE



Topography by J. B. Leavitt.
Surveyed in 1922-1923.

ROAD CLASSIFICATION

Heavy-duty	Light-duty
Medium-duty	Unimproved dirt

U.S. Route State Route

APPROXIMATE MEAN DECLINATION, 1923

SCALE 1:62500

CONTOUR INTERVAL 20 FEET
DATUM IS MEAN SEA LEVEL

FOR SALE BY U.S. GEOLOGICAL SURVEY, DENVER 25, COLORADO OR WASHINGTON 25, D. C.
AND BY THE MISSOURI GEOLOGICAL SURVEY, ROLLA, MISSOURI
A FOLDER DESCRIBING TOPOGRAPHIC MAPS AND SYMBOLS IS AVAILABLE ON REQUEST

USGS
Historical File
Topographic Division

USGS
FILE COPY
TOPOGRAPHIC DIVISION

Polyconic projection. 1927 North American datum
10,000-foot grid based on Missouri (East)
rectangular coordinate system
1000-meter Universal Transverse Mercator grid ticks,
zone 16, shown in blue

PERRYVILLE, MO.
N 3730-W 8945/15

1923

MAY 2 1960

2036