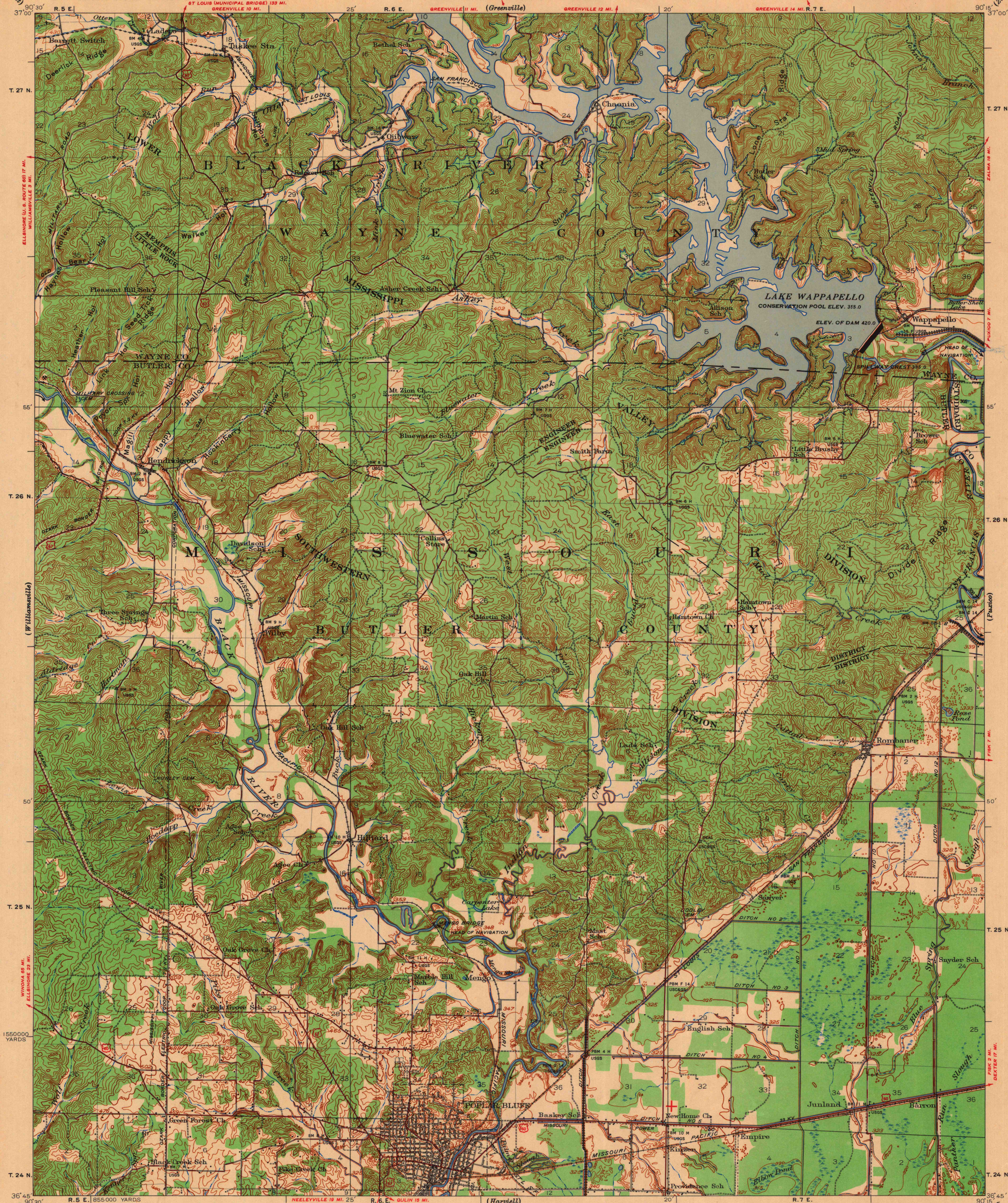


DEPARTMENT OF THE INTERIOR
U. S. GEOLOGICAL SURVEY

WAR DEPARTMENT
CORPS OF ENGINEERS, U. S. ARMY

MISSOURI
POPLAR BLUFF QUADRANGLE
GRID ZONE "C"



Edition prepared for the President, Mississippi River Commission. Photo-lithographed and reprinted by Engineer Reproduction Plant, The Army War College, Washington, D. C., from engravings by U. S. Geological Survey with revisions by Mississippi River Commission 1939.

Control by U. S. Geological Survey, U. S. Coast and Geodetic Survey and Corps of Engineers, U. S. Army, Memphis District. Descriptions, elevations and geodetic positions of bench marks may be obtained from Corps of Engineers, Memphis District, Memphis, Tennessee. Topography by Kostka Mudd, Daniel Kennedy, A. T. Munson, J. B. Leachman, W. A. Tingey, R. O. Davis, G. W. Moore and R. D. Courtney of U. S. Geological Survey and by Corps of Engineers, U. S. Army, Memphis District.

Culture and drainage in part compiled from aerial photographs taken by Air Corps, U. S. Army.

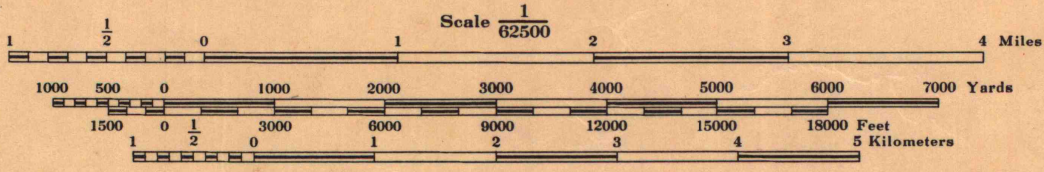
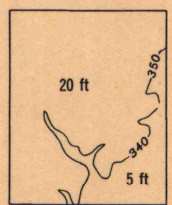
Surveyed in 1931-1939.

Levee work is under the jurisdiction of Corps of Engineers, Memphis District.

Political boundaries are shown according to best available information and are subject to change except where established by court decision. Work under Flood Control Act shown as of December 1939.

Polyconic Projection, North American Datum.

Wappapello Reservoir added July, 1941 by Presidents Office, Mississippi River Commission, Vicksburg, Miss., and revised January, 1949 from data prepared by Memphis District from aerial photographs flown 5 April, 1945.

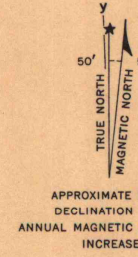


Contour intervals 5 and 20 feet (see diagram)

Datum is mean sea level. Elevations differ from mean gulf level elevations at Biloxi, Mississippi by small fractions of a foot. Persons interested may secure elevations of bench marks as determined by the latest U. S. C. & G. S. adjustment, by applying to the U. S. Coast and Geodetic Survey.

FIVE THOUSAND YARD GRID COMPUTED FROM "GRID SYSTEM FOR PROGRESSIVE MAPS IN THE U. S. C. & G. S. SPECIAL PUBLICATION NO. 55"

Additional copies may be procured from The President, Mississippi River Commission, Vicksburg, Miss. 20 cents per copy



LEGEND

Levee	Retards and dikes	Revetment	River Gage	Levee mile post	Levee station	Towhead	LMP	LS	TH
-------	-------------------	-----------	------------	-----------------	---------------	---------	-----	----	----

Distances above mouth of St Francis River shown at 5 mile intervals.

Distances above mouth of Black River shown at 5 mile intervals.

ROUTES USUALLY TRAVELED
HARD IMPROVED SURFACES
OTHER SURFACE IMPROVEMENTS
1939

U. S. ROUTE
STATE ROUTE

POPLAR BLUFF, MO.
EDITION OF 1939
N3645-W9015/15

MAP AND AIR PHOTO LIBRARY
University of Wisconsin