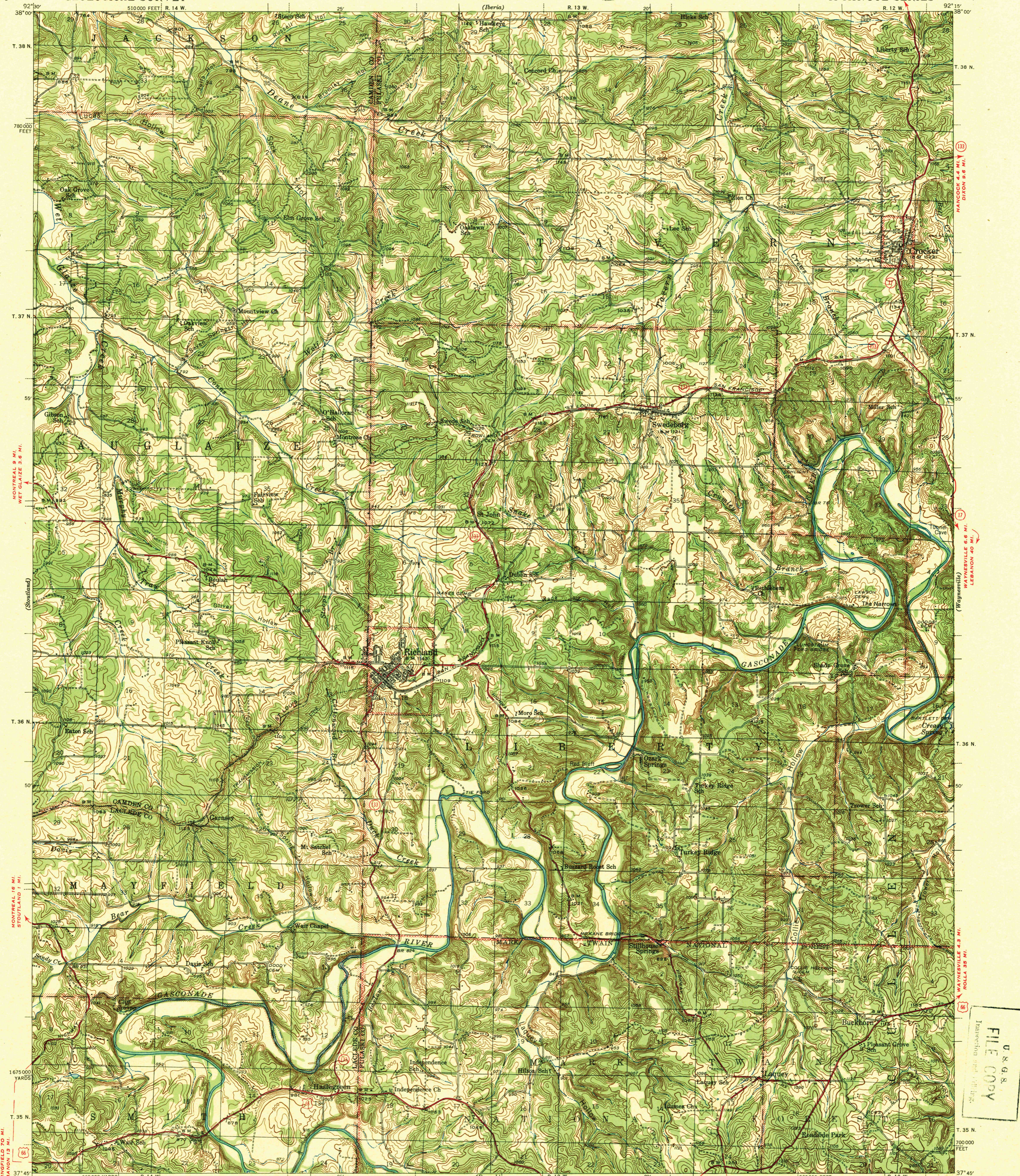
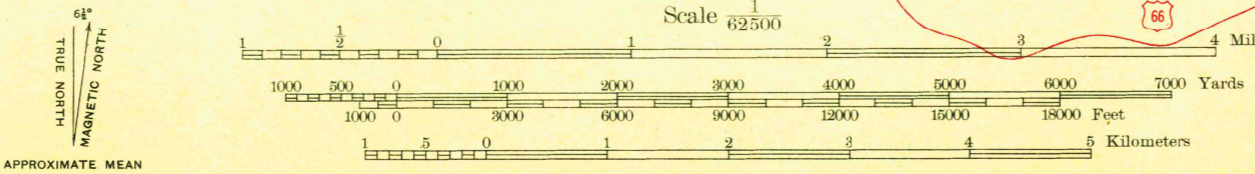


FILE COPY
Transaction and File No.



Topography by F. W. Hughes, J. B. Leachman, C. T. Galloway,
F. W. Tuley, S. E. Mitchell, and T. A. Magee
Surveyed in 1932, 1936, and 1941



USGS
Historical File
Topographic Division
Polyconic projection. 1927 North American datum
5000 yard grid based on U. S. zone system, C
10000 foot grid based on Missouri (Central)
rectangular coordinate system

ROUTES USUALLY TRAVELED
HARD IMPROVED SURFACES
OTHER SURFACE IMPROVEMENTS
U. S. ROUTE 1943 STATE ROUTE

RICHLAND, MO.
Edition of 1943
N3745-W9215/15

MAY 23 1943

FILE COPY
Transaction and File No.

3115