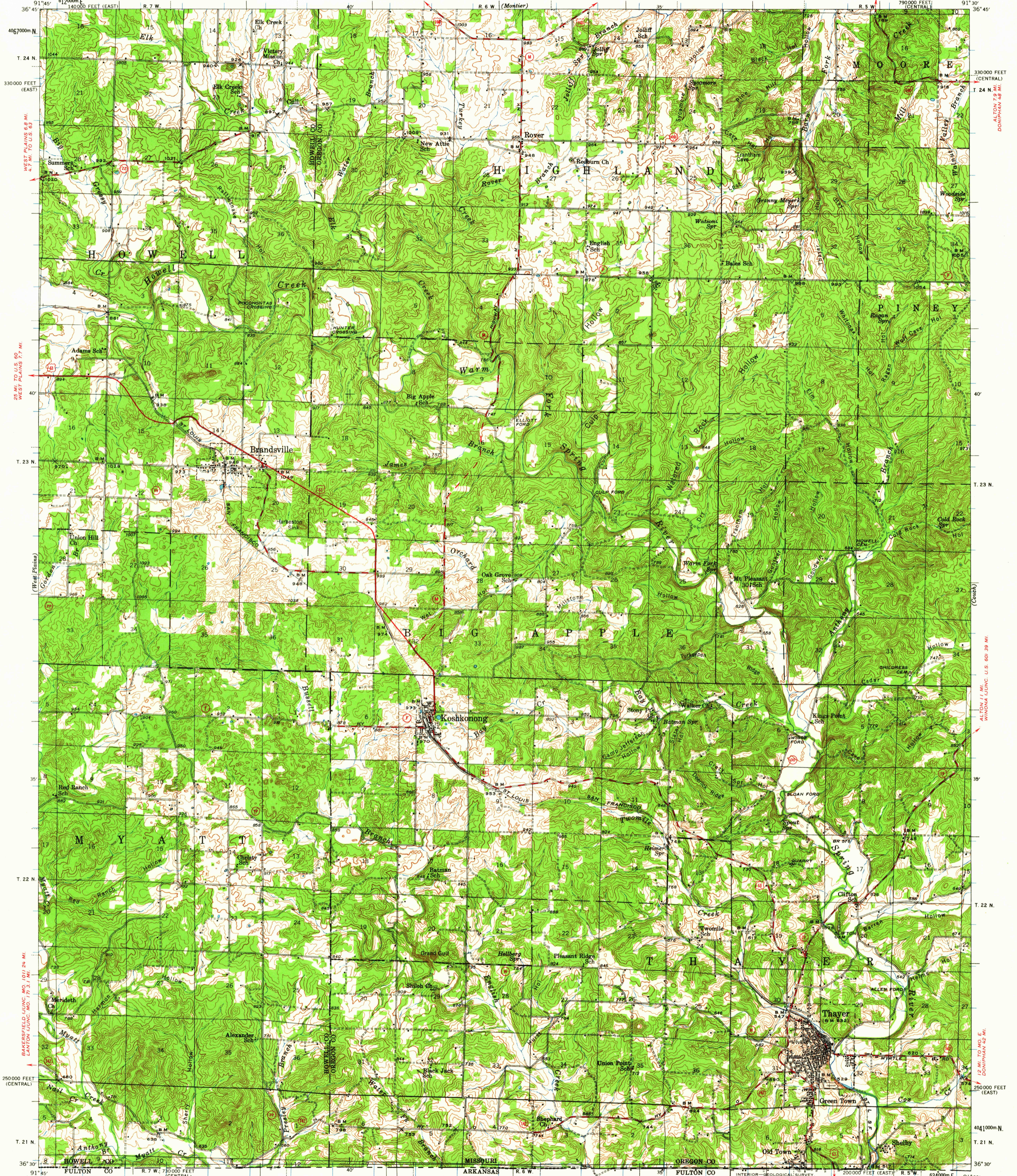


UNITED STATES
DEPARTMENT OF THE INTERIOR
GEOLOGICAL SURVEY

STATE OF MISSOURI
GEOLOGICAL SURVEY AND WATER RESOURCES

MISSOURI
THAYER QUADRANGLE
15-MINUTE SERIES
790000 FEET
(CENTRAL)



Mapped by the Geological Survey
1943

ROAD CLASSIFICATION
1963

Heavy-duty ——— Light-duty ———
Medium-duty ——— Unimproved dirt ———

U.S. Route State Route

TRUE NORTH
MAGNETIC NORTH

APPROXIMATE MEAN
DECLINATION, 1948

SCALE 1:62500

0 1 2 3 4 MILES
0 3000 6000 9000 12000 15000 18000 21000 FEET
0 1 2 3 4 5 KILOMETERS

CONTOUR INTERVAL 20 FEET
DATUM IS MEAN SEA LEVEL

USGS
Historical File
Topographic Division

Polyconic projection, 1927 North American datum
10,000-foot grids based on Missouri (East) and
Missouri (Central) rectangular coordinate systems
1000-meter Universal Transverse Mercator grid ticks,
zone 15, shown in blue

THAYER, MO.
N3630-W9130/15

1943

FOR SALE BY U.S. GEOLOGICAL SURVEY, DENVER 25, COLORADO OR WASHINGTON 25, D.C.
AND BY THE MISSOURI GEOLOGICAL SURVEY, ROLLA MISSOURI
A FOLDER DESCRIBING TOPOGRAPHIC MAPS AND SYMBOLS IS AVAILABLE ON REQUEST

NOV 14 1963

1230