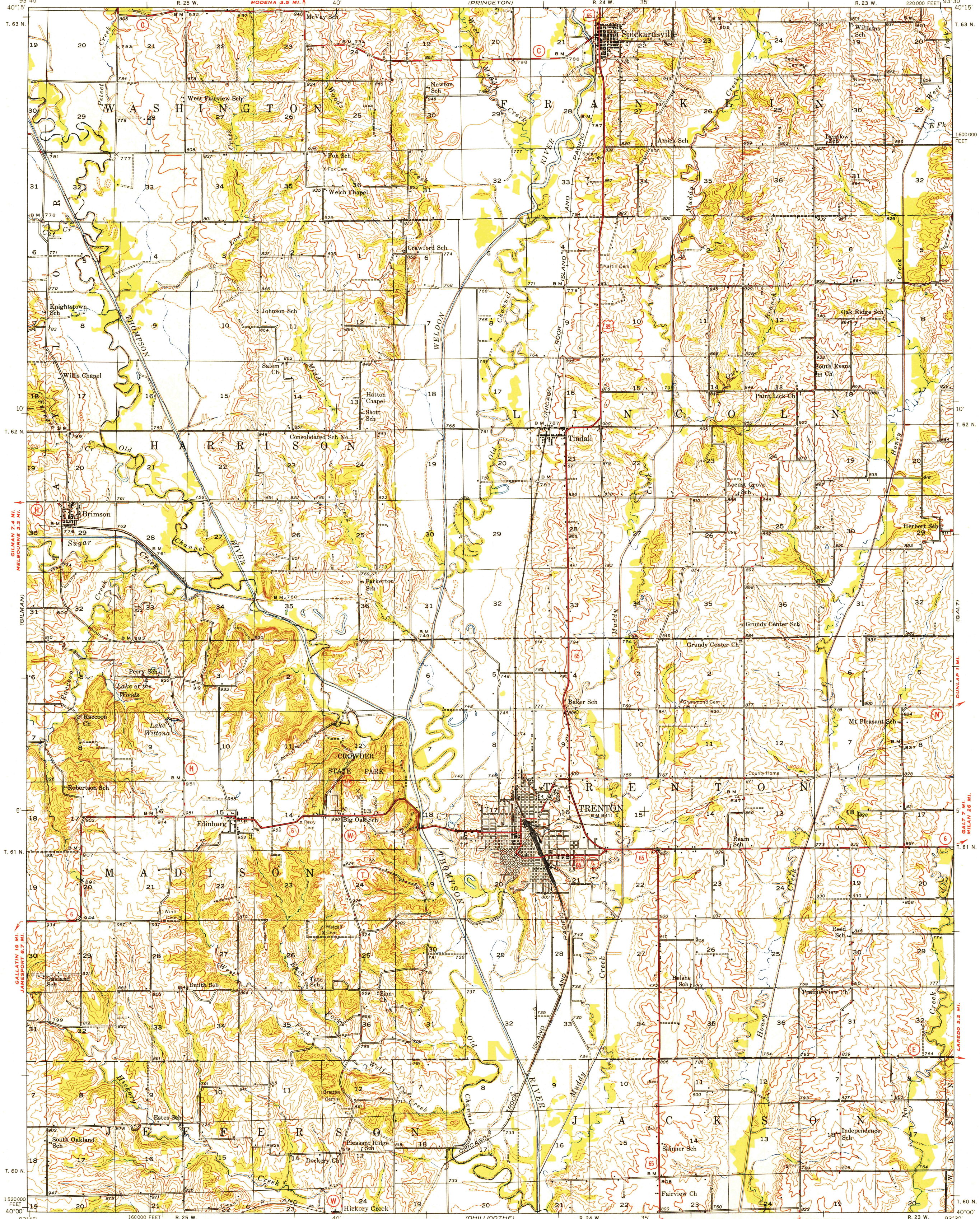


U. S. G. S.
FILE COPY
Inspection and Editing.

UNITED STATES
DEPARTMENT OF THE INTERIOR
GEOLOGICAL SURVEY

STATE OF MISSOURI
GEOLOGICAL SURVEY AND WATER RESOURCES
EDWARD L. CLARK, STATE GEOLOGIST
(PRINCETON)

TRENTON QUADRANGLE
MISSOURI-GRUNDY CO.
15 MINUTE SERIES (TOPOGRAPHIC)

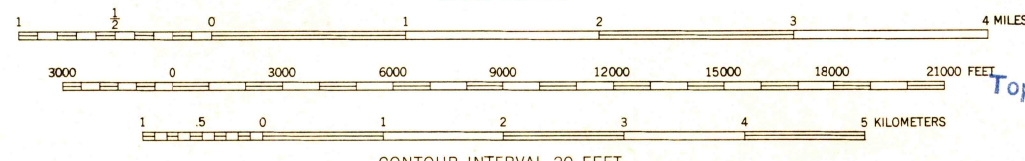


U. S. G. S.
FILE COPY
Inspection and Editing.

U. S. G. S.
FILE COPY
Inspection and Editing.

Mapped, edited, and published by the Geological Survey
Control by USGS and USC&GS
Culture and drainage in part compiled
from aerial photographs taken 1939
Topography by plane-table methods, 1943 and 1946
Polyconic projection, 1927 North American datum
10,000-foot grid based on Missouri coordinate system,
central zone

TRUE NORTH
MAGNETIC NORTH
APPROXIMATE MEAN
DECLINATION, 1946



SCALE 1:62500
CONTOUR INTERVAL 20 FEET
DASHED LINES REPRESENT HALF-INTERVAL CONTOURS
DATUM IS MEAN SEA LEVEL
THIS MAP COMPLIES WITH NATIONAL MAP ACCURACY STANDARDS
FOR SALE BY U. S. GEOLOGICAL SURVEY, WASHINGTON 25, D. C.

USGS
Historical File
Topographic Division

ROAD CLASSIFICATION
HARD-SURFACE ALL WEATHER ROADS DRY WEATHER ROADS
Heavy-duty 4 LANE LANE Improved dirt
Medium-duty 4 LANE LANE Unimproved dirt
Loose-surface, graded, or narrow hard-surface
U. S. Route State Route

U. S. G. S.
FILE COPY
Inspection and Editing.

TRENTON, MO.
N4000-W9330/15
PRINTED 1948

OCT 15 1948

3225