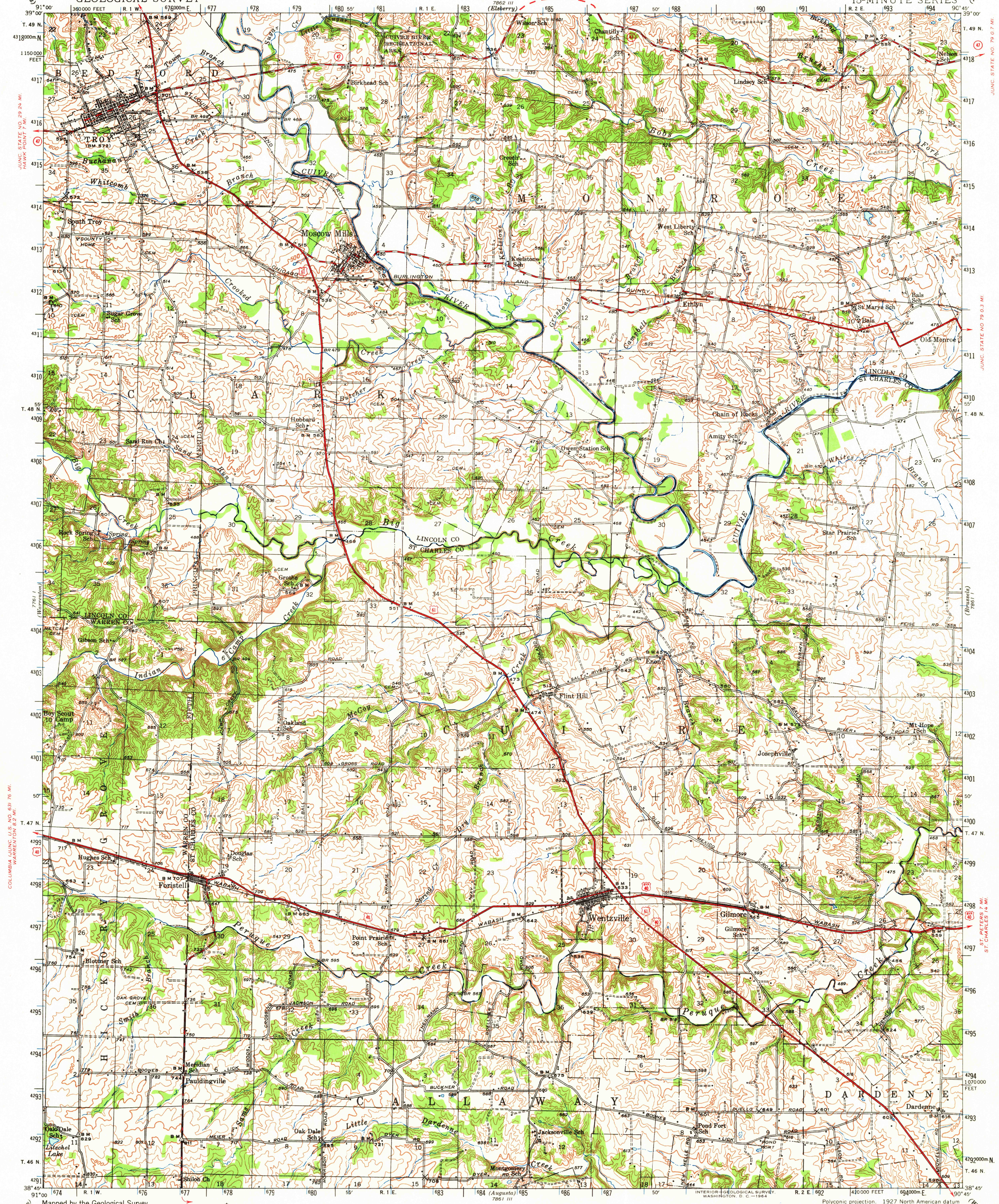


BOWLING GREEN (JUNC. U.S. NO. 591 31.4 MI.)  
AUBURN 9.4 MI.

UNITED STATES  
DEPARTMENT OF THE INTERIOR  
GEOLOGICAL SURVEY

STATE OF MISSOURI  
GEOLOGICAL SURVEY AND WATER RESOURCES  
EDWARD L. CLARK, STATE GEOLOGIST

MISSOURI  
TROY QUADRANGLE  
15-MINUTE SERIES



COLUMBIA (JUNC. U.S. NO. 631 76 MI.)  
WARRENTON 8.2 MI.

ST. PETERS 7 MI.  
ST. CHARLES 14 MI.

WELDON SPRINGS 4.2 MI.  
ST. LOUIS (CIVIC CENTER) 33 MI.  
(Weldon Springs 2000)

Mapped by the Geological Survey  
1940-1941

CAPPELL 5.2 MI.

SCALE 1:62500

USGS  
Historical File  
Topographic Division

Polyconic projection, 1927 North American datum  
10,000-foot grid based on Missouri (East)  
rectangular coordinate system  
1000-meter Universal Transverse Mercator grid ticks,  
zone 15, shown in blue

ROAD CLASSIFICATION  
Heavy-duty ——— Light-duty ———  
Medium-duty ——— Unimproved dirt ———  
U.S. Route State Route

TROY, MO.  
N3845—W9045/15

1941

AMS 7861 IV—SERIES V779

FOR SALE BY U. S. GEOLOGICAL SURVEY, DENVER 25, COLORADO, OR WASHINGTON 25, D. C.  
AND BY THE MISSOURI GEOLOGICAL SURVEY, ROLLA, MISSOURI  
A FOLDER DESCRIBING TOPOGRAPHIC MAPS AND SYMBOLS IS AVAILABLE ON REQUEST