

BOWLING GREEN JUNC. U.S. NO. 54 31.4 MI.

AUBURN 9.4 MI.

UNITED STATES
DEPARTMENT OF THE INTERIOR
GEOLOGICAL SURVEY

STATE OF MISSOURI
GEOLOGICAL SURVEY AND WATER RESOURCES
EDWARD L. CLARK, STATE GEOLOGIST

MISSOURI
TROY QUADRANGLE
15-MINUTE SERIES



JUNC. STATE NO. 29 24 MI.
HAWK POINT 7 MI.

JUNC. STATE NO. 79 0.7 MI.

JUNC. STATE NO. 79 0.3 MI.

JUNC. STATE NO. 79 0.3 MI.

JUNC. STATE NO. 79 0.3 MI.

JUNC. STATE NO. 79 0.3 MI.

COLUMBIA JUNC. U.S. NO. 63 76 MI.
WARRENTON 8.2 MI.

JUNC. STATE NO. 79 0.3 MI.

JUNC. STATE NO. 79 0.3 MI.

Maped by the Geological Survey
1940-1941

CAPPELLN 5.2 MI.

(O'Fallon 125,000)

SCALE 1:62,500

USGS

Historical File
Topographic Division

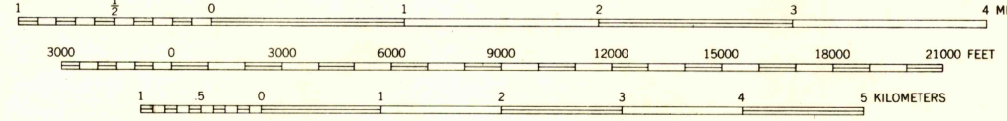
Polyconic projection. 1927 North American datum
5000 yard grid based on U. S. zone system, C 161
10000 foot grid based on Missouri (East) 161
rectangular coordinate system

WELDON SPRINGS 4.2 MI.
ST. LOUIS (CIVIC CENTER) 33 MI.

TROY, MO.

Edition of 1945

N 3845 - W 9045/15



Contour interval 20 feet

Datum is mean sea level

U.S.G.S.
FILE COPY
TOPOGRAPHIC DIVISION

APR - 2 1959
915