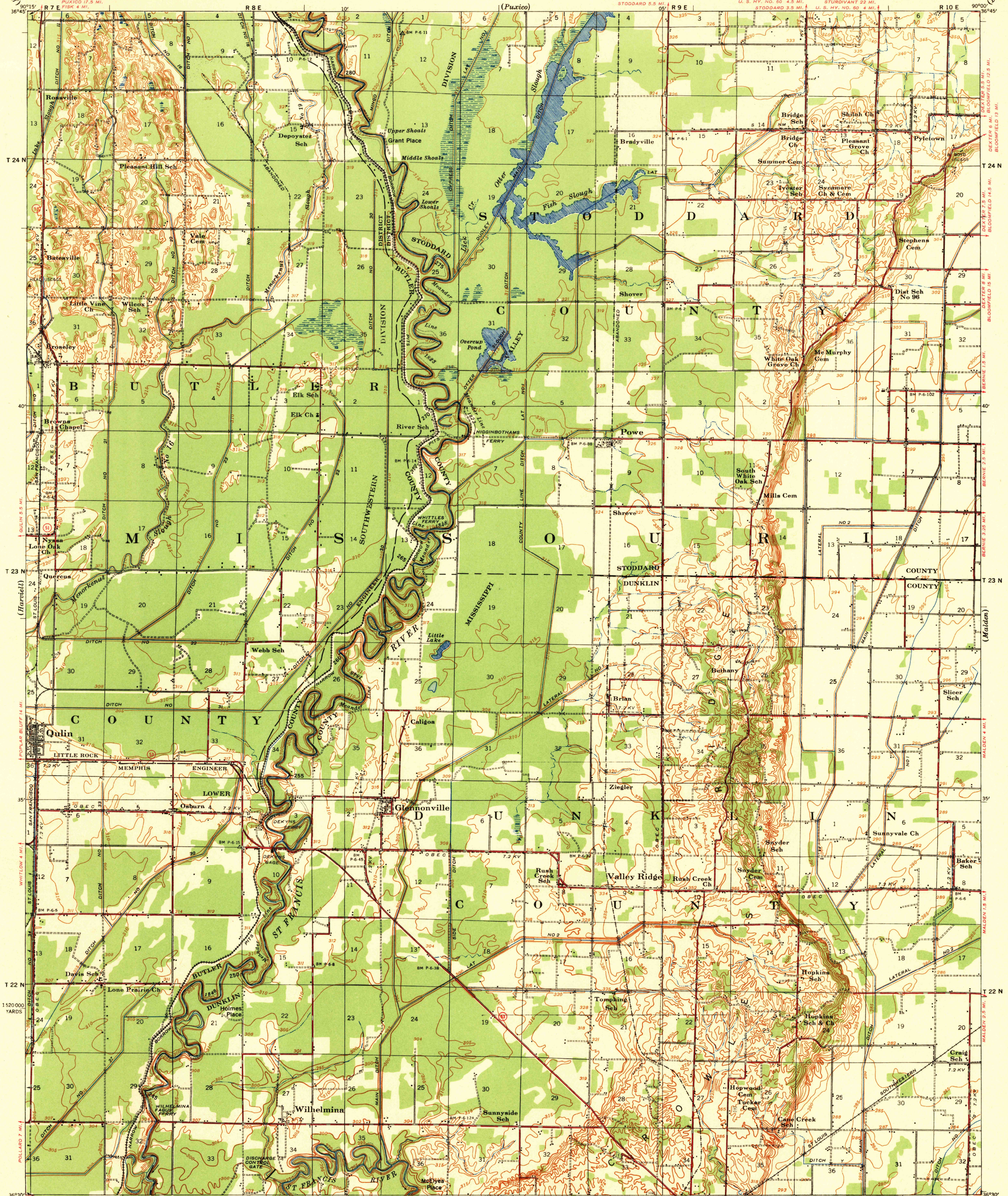
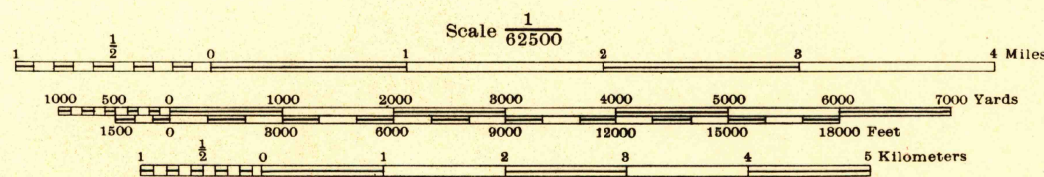


WAR DEPARTMENT
CORPS OF ENGINEERS

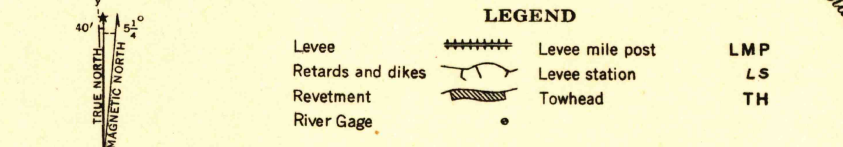
MISSOURI
VALLEY RIDGE QUADRANGLE
GRID ZONE "C"



Prepared under the direction of the President, Mississippi River Commission.
Horizontal control by Corps of Engineers, U. S. Army, Memphis District.
Vertical control by Corps of Engineers, U. S. Army, Memphis District.
Descriptions, elevations and geodetic positions of bench marks may be obtained from Memphis Engineer District, Memphis, Tennessee.
Topography by Corps of Engineers, U. S. Army, Memphis District, 1931-40.
Revised by Mississippi River Commission, 1933, 1935 and 1940.
Political boundaries are shown according to best available information and are subject to change except where established by court decision.
Polyconic Projection, North American Datum.



Contour interval 5 and 25 feet changing on the 350 foot contour on Crowley's Ridge
Datum is mean Gulf level at Biloxi, Mississippi. Elevations differ from mean sea level elevations as determined by the U. S. Coast and Geodetic Survey, by small fractions of a foot. Persons interested may secure elevations of bench marks as determined by the latest U. S. C. & G. S. adjustment, by applying to the U. S. Coast and Geodetic Survey.
FIVE THOUSAND YARD GRID COMPUTED FROM "GRID SYSTEM FOR PROGRESSIVE MAPS" IN THE U. S. ZONE C, U. S. C. & G. S. SPECIAL PUBLICATION NO. 59
Additional copies may be procured from The President, Mississippi River Commission, Vicksburg, Miss. 10 cents per copy



APPROXIMATE MEAN DECLINATION 1955 ANNUAL MAGNETIC CHANGE 2' INCREASE
Distances above mouth of St. Francis River are shown at 5 mile intervals.
ROUTES USUALLY TRAVELED
HARD IMPROVED SURFACES
OTHER SURFACE IMPROVEMENTS
U. S. ROUTE
STATE ROUTE