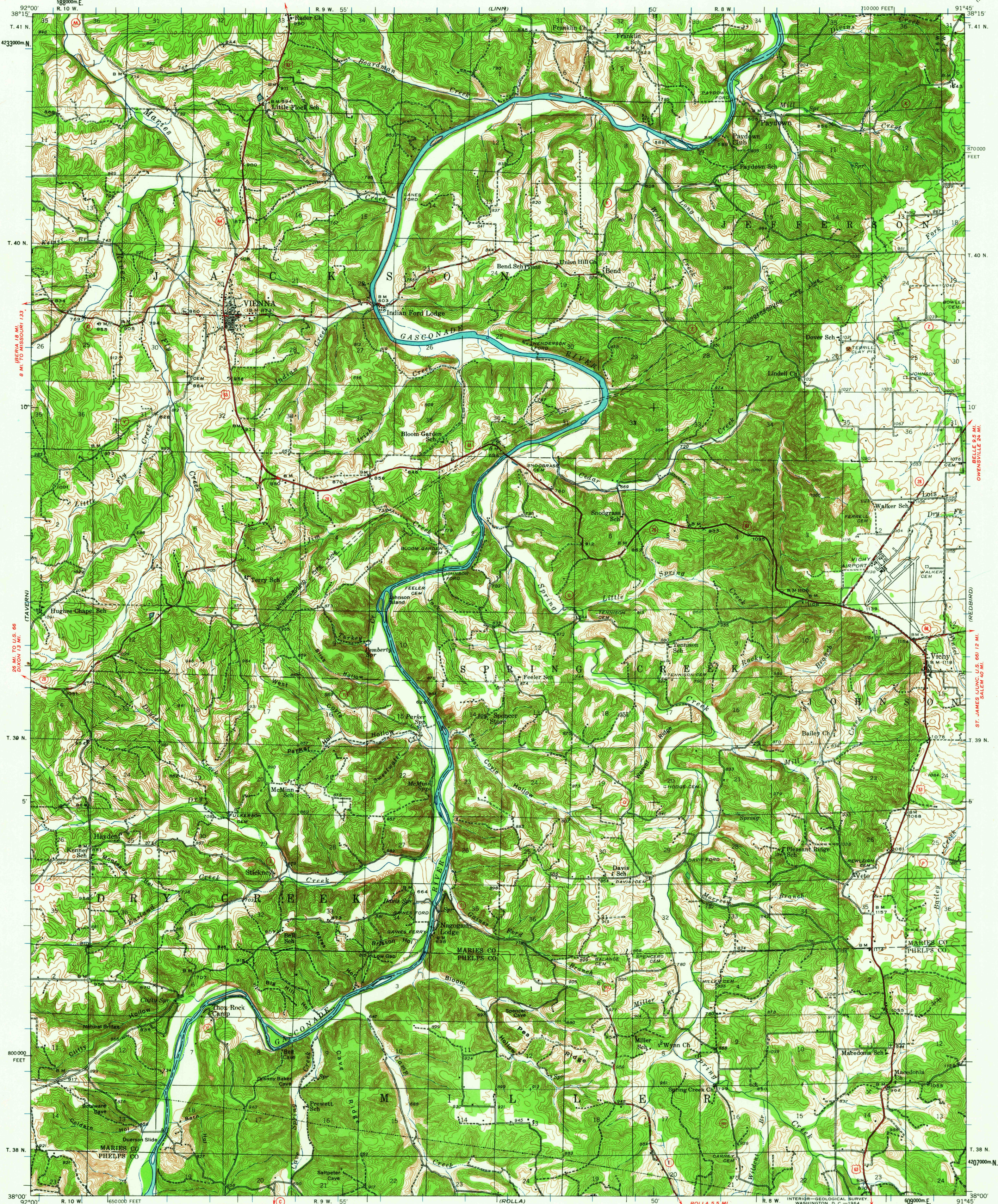
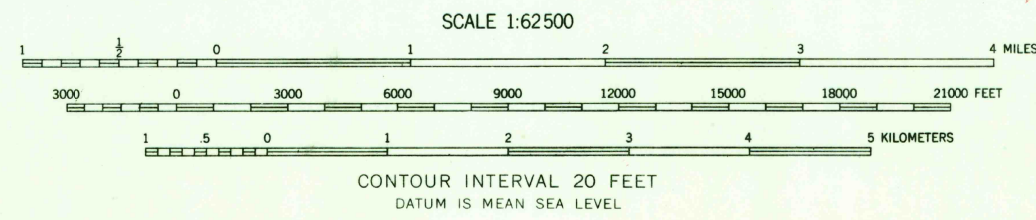


JEFFERSON CITY (CIVIC CENTER) 31 MI.  
FREEBURG 5.2 MI.



Mapped, edited, and published by the Geological Survey  
Control by USGS, USCGS, and  
Missouri School of Mines Vocational Training students.  
Topography by plane-table methods, 1936-1937  
Main highways classified in 1948  
Polyconic projection. 1927 North American datum  
10000-foot grids based on Missouri coordinate system,  
central zone  
1000-meter Universal Transverse Mercator grid ticks,  
zone 15, shown in blue

TRUE NORTH  
MAGNETIC NORTH  
APPROXIMATE MEAN  
DECLINATION, 1937



ROAD CLASSIFICATION  
1964  
Heavy-duty ——— Light-duty ———  
Medium-duty ——— Unimproved dirt ———  
U.S. Route □ State Route ○

USGS  
Historical File  
Topographic Division

VIENNA, MO.  
N 3800 - W 9145/15  
1937

THIS MAP COMPLIES WITH NATIONAL MAP ACCURACY STANDARDS  
FOR SALE BY U. S. GEOLOGICAL SURVEY, DENVER 25, COLORADO OR WASHINGTON 25, D. C.  
AND BY THE MISSOURI GEOLOGICAL SURVEY, ROLLA, MISSOURI  
A FOLDER DESCRIBING TOPOGRAPHIC MAPS AND SYMBOLS IS AVAILABLE ON REQUEST

2230