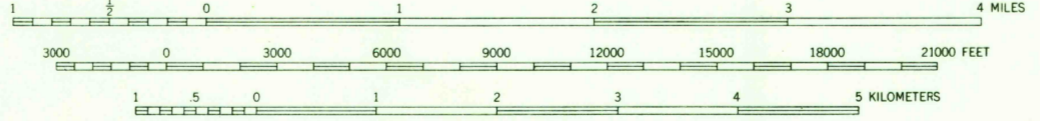
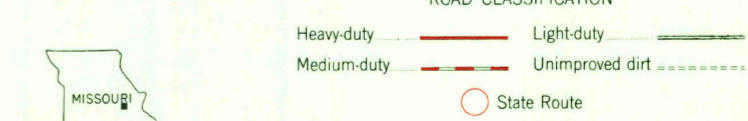


Mapped, edited, and published by the Geological Survey  
Control by USGS and USC&GS  
Topography from aerial photographs by multiplex methods  
Aerial photographs taken 1945. Field check 1948  
Polyconic projection. 1927 North American datum  
10,000-foot grid based on Missouri coordinate system,  
east zone  
Red tint indicates area in which only  
landmark buildings are shown  
1000 meter Universal Transverse Mercator grid ticks,  
zone 15, shown in blue



CONTOUR INTERVAL 20 FEET  
DASHED LINES REPRESENT HALF-INTERVAL CONTOURS  
DATUM IS MEAN SEA LEVEL



U.S.G.S. WASHINGTON, MO.  
N8330-W9100/15  
1948  
AMS 7761 II-SERIES V779

THIS MAP COMPLIES WITH NATIONAL MAP ACCURACY STANDARDS  
FOR SALE BY U. S. GEOLOGICAL SURVEY, DENVER, COLORADO 80225 OR WASHINGTON, D. C. 20242  
AND BY THE MISSOURI GEOLOGICAL SURVEY, ROLLA, MISSOURI  
A FOLDER DESCRIBING TOPOGRAPHIC MAPS AND SYMBOLS IS AVAILABLE ON REQUEST

JUN 28 1965

3510